

THIS MAP WAS PREPARED FOR ASSESSMENT PURPOSE ONLY.

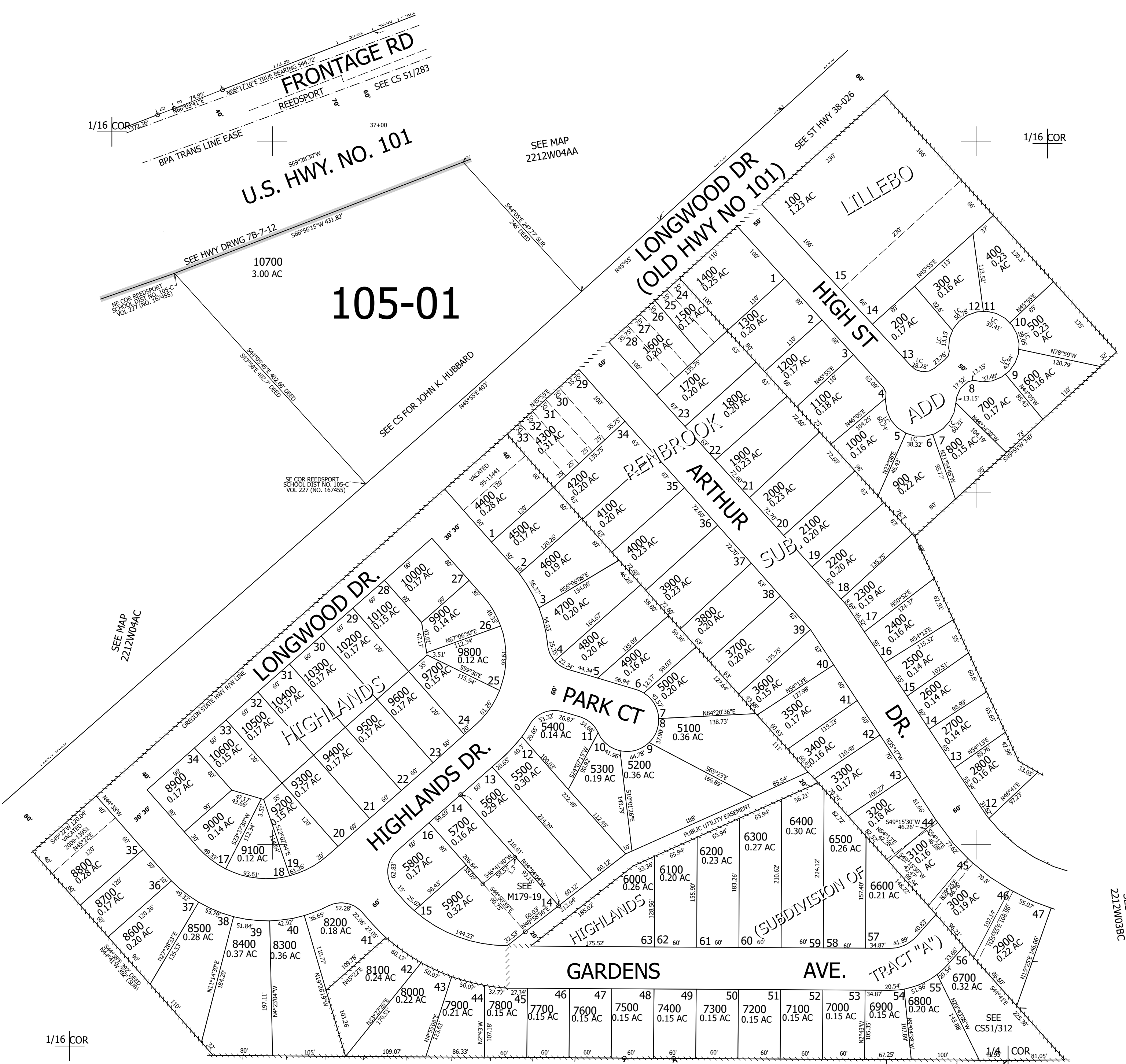
Upper Left:  
124°7'49"W 43°41'40"N  
3961423E 759795N ft

SE1/4 NE1/4 SEC.04 T.22S. R.12W. W.M.  
DOUGLAS COUNTY  
1" = 100'

Date Exported 2025-03-13

221204AD  
Reedsport

CANCELLED NOS:  
5701



105-01

SEE MAP 2212W04DA

1/16 COR

1/16 COR

SEE MAP 2212W03BC

SEE MAP 2212W03

221204AD  
Reedsport

Lower Right:  
124°7'21"W 43°41'24"N  
3963400E 758075N ft