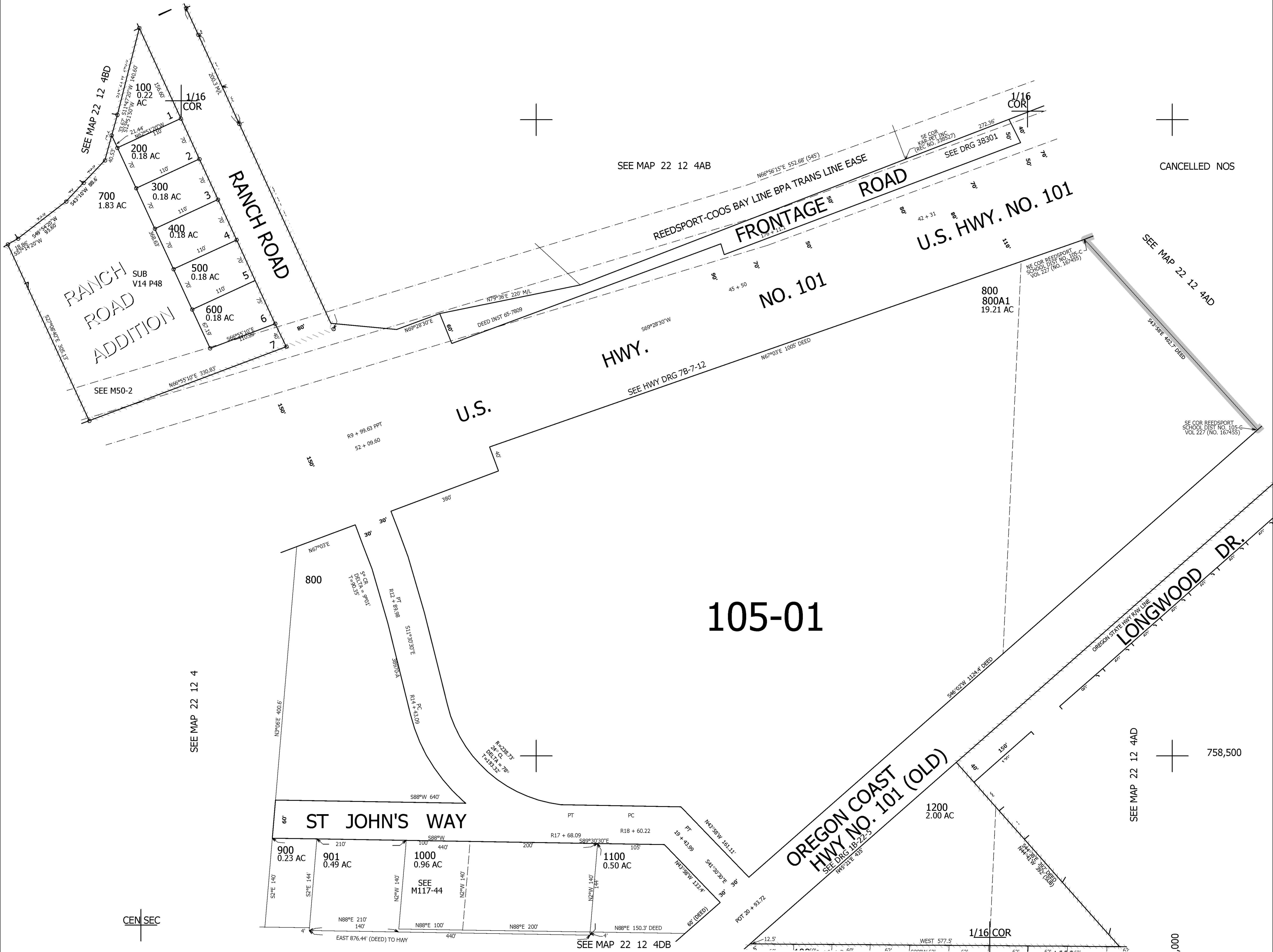


THIS MAP WAS PREPARED FOR ASSESSMENT PURPOSE ONLY.

SW1/4 NE1/4 SEC.4 T.22S. R.12W. W.M.
DOUGLAS COUNTY
1" = 100'

REVISED ON
10-26-07

22 12 4AC
REEDSPORT



CANCELLED NOS

SEE MAP 22 12 4AD

SEE COR REEDSPORT SCHOOL DIST NO. 105-C VOL 227 (NO. 167455)

105-01

758,500

SEE MAP 22 12 4AD

3,962,000

22 12 4AC
REEDSPORT