

THIS MAP WAS PREPARED FOR ASSESSMENT PURPOSE ONLY.

Upper Left:  
124°8'7"W 43°41'51"N  
3960154E 760956N ft., †

COR

NW1/4 NE1/4 SEC.04 T.22S. R.12W. W.M.  
DOUGLAS COUNTY

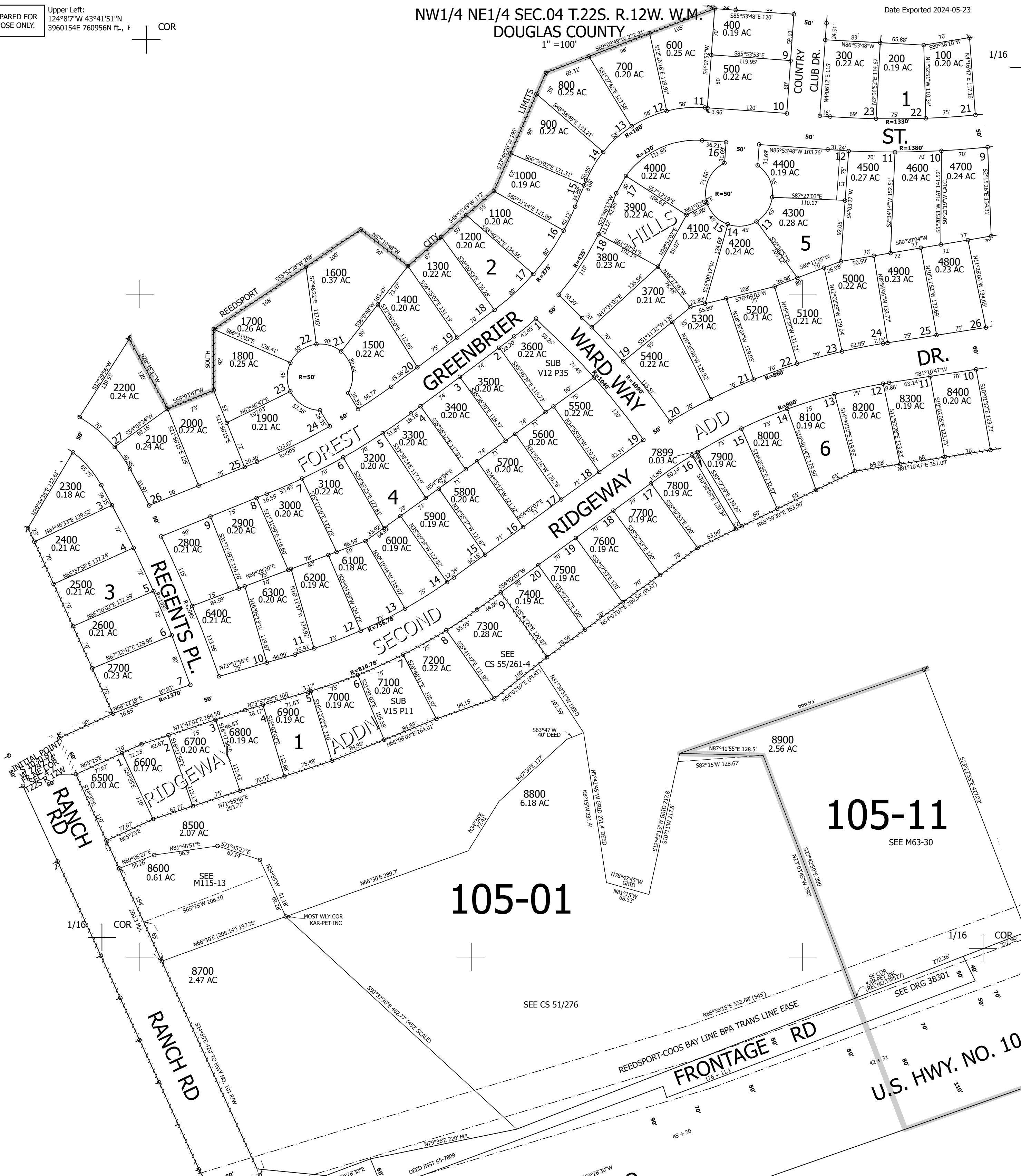
1" = 100'

Date Exported 2024-05-23

221204AB  
Reedsport

CANCELLED NOS:  
8501 8501M1 8500M1  
8600M1 8600A1 4401

1/16 COR



1/16 COR

105-01

SEE CS 51/276

105-11

SEE M63-30

1/16 COR

FRONTAGE RD

U.S. HWY. NO. 101

221204AB  
Reedsport

Lower Right:  
124°7'40"W 43°41'34"N  
3962116E 759166N ft