

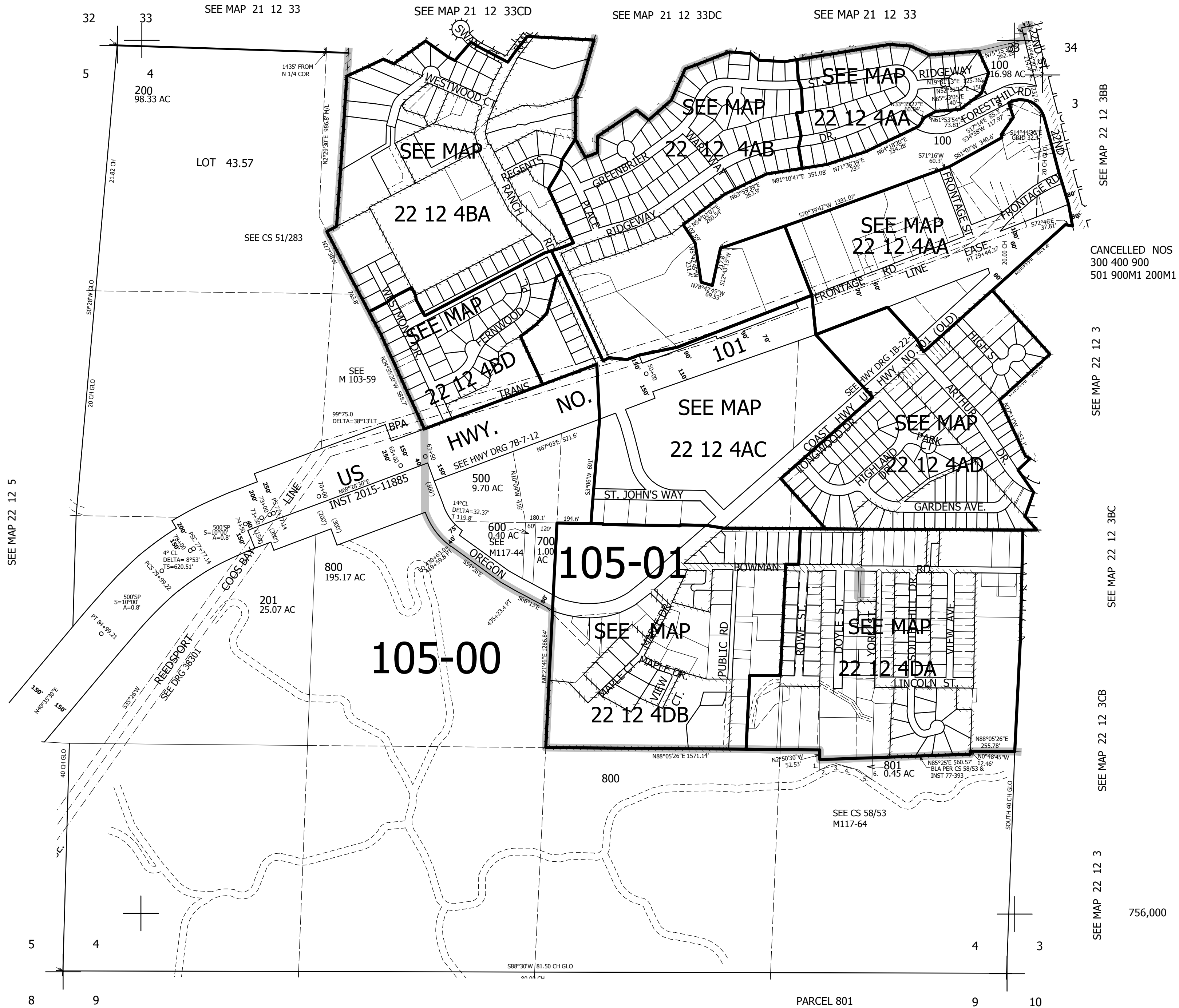
THIS MAP WAS PREPARED FOR ASSESSMENT PURPOSE ONLY.

SEC.4 T.22S. R.12W. W.M.
DOUGLAS COUNTY

1" = 400'

REVISED ON
11-16-15

22 12 4
& INDEX
REEDSPORT



SEE MAP 22 12 5

SEE MAP 21 12 33

SEE MAP 21 12 33CD

SEE MAP 21 12 33DC

SEE MAP 21 12 33

SEE MAP 22 12 3BB

CANCELLED NOS
300 400 900
501 900M1 200M1

SEE MAP 22 12 3

SEE MAP 22 12 3BC

SEE MAP 22 12 3CB

SEE MAP 22 12 3

756,000

SEE MAP 22 12 9

PARCEL 801

1. S2°50'30"E 60' (DEED)
2. S2°50'30"E 56.19' (M117-64)
3. N60°E 57' (DEED)
4. N75°E 45' (DEED)
5. N73°19'41"E 110.5' (M117-64)
6. S77°E 131' (DEED)
7. S76°20'48"E 98.21' (M117-64)
8. S57°E TO INT WITH THE S'LY EXT OF E. LINE OF V829 P674 (DEED)
9. S61°31'22"E 114' (M117-64)
10. N0°24'19"W TO 1/16 LINE (DEED)
11. N1°31'40"W 126.26' TO BLA CS 58/53 (M117-64)

3,963,000

22 12 4
& INDEX
REEDSPORT