

THIS MAP WAS PREPARED FOR ASSESSMENT PURPOSE ONLY.

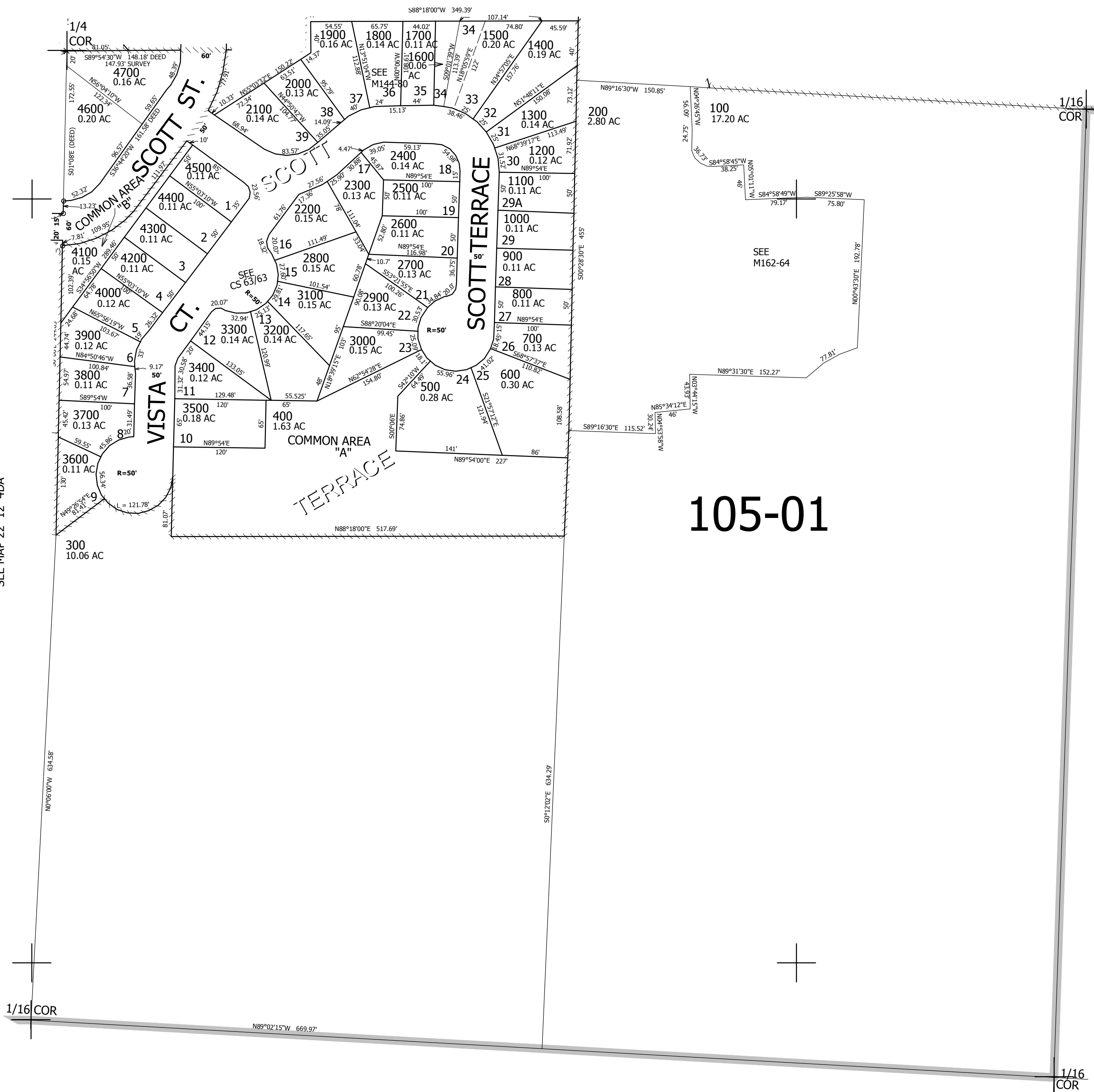
NW1/4 SW1/4 SEC.3 T.22S. R.12W. W.M. DOUGLAS COUNTY

REVISED ON

22 12 3CB REEDSPORT

1" = 100'

SEE MAP 22 12 3BC



CANCELLED NOS

105-01

SEE MAP 22 12 4DA

SEE MAP 22 12 3

757,000

SEE MAP 22 12 3

3,964,000

22 12 3CB REEDSPORT