

THIS MAP WAS PREPARED FOR ASSESSMENT PURPOSE ONLY.

SE1/4 NW1/4 SEC.3 T.22S. R.12W. W.M.
DOUGLAS COUNTY

REVISED ON
12-7-10

22 12 3BD
REEDSPORT

1" = 100'

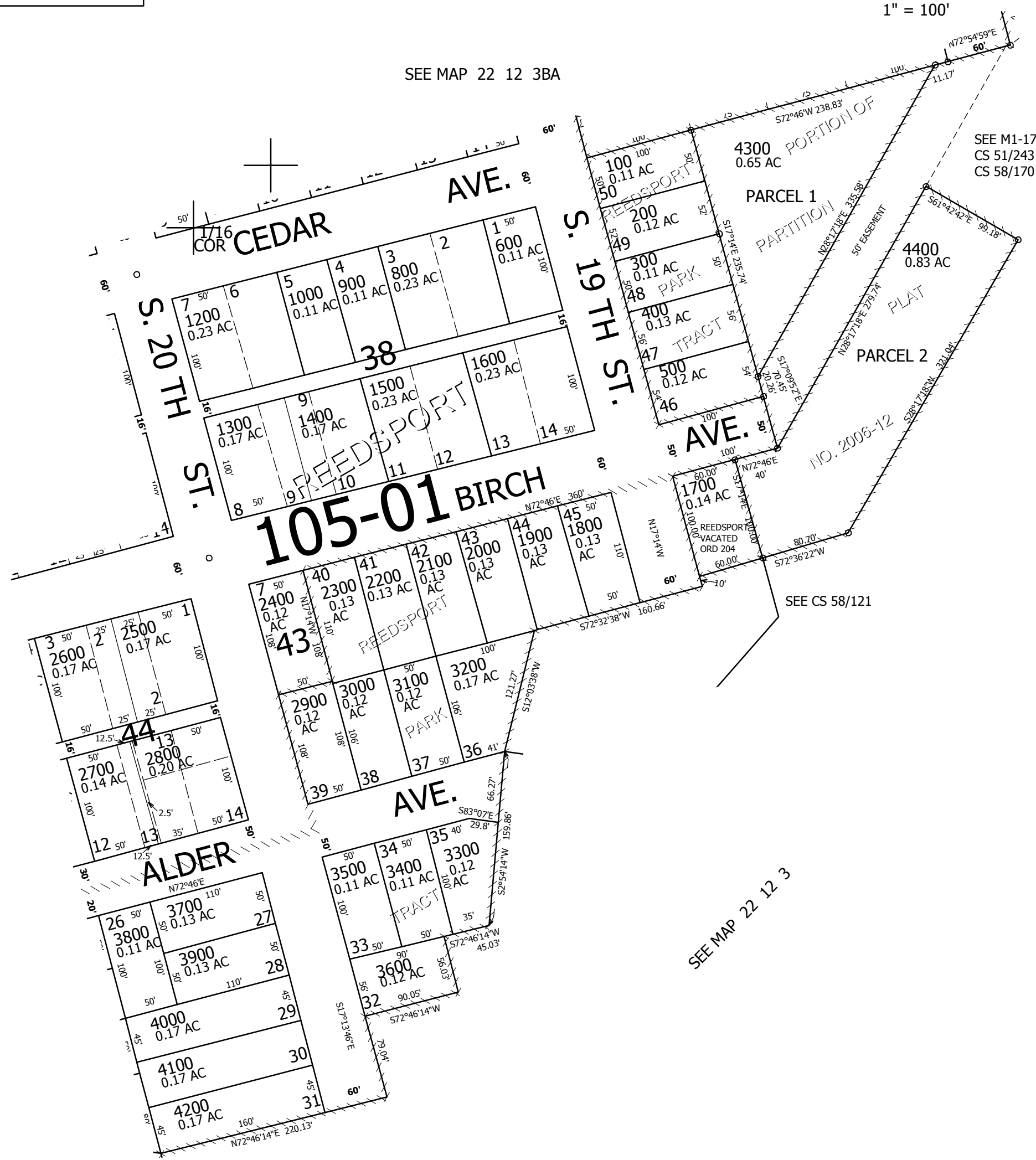
SEE MAP 22 12 3BA

SEE MAP 22 12 3BC

SEE MAP 22 12 3

CANCELLED NOS
700 1100

1/16 COR



SEE MAP 22 12 3

1/16 COR

758,500

3,965,500

CEN SEC

22 12 3BD
REEDSPORT