

THIS MAP WAS PREPARED FOR ASSESSMENT PURPOSE ONLY.

SEC.3 T.22S. R.12W. W.M. DOUGLAS COUNTY

REVISED ON 1-29-21

22 12 3 & INDEX REEDSPORT

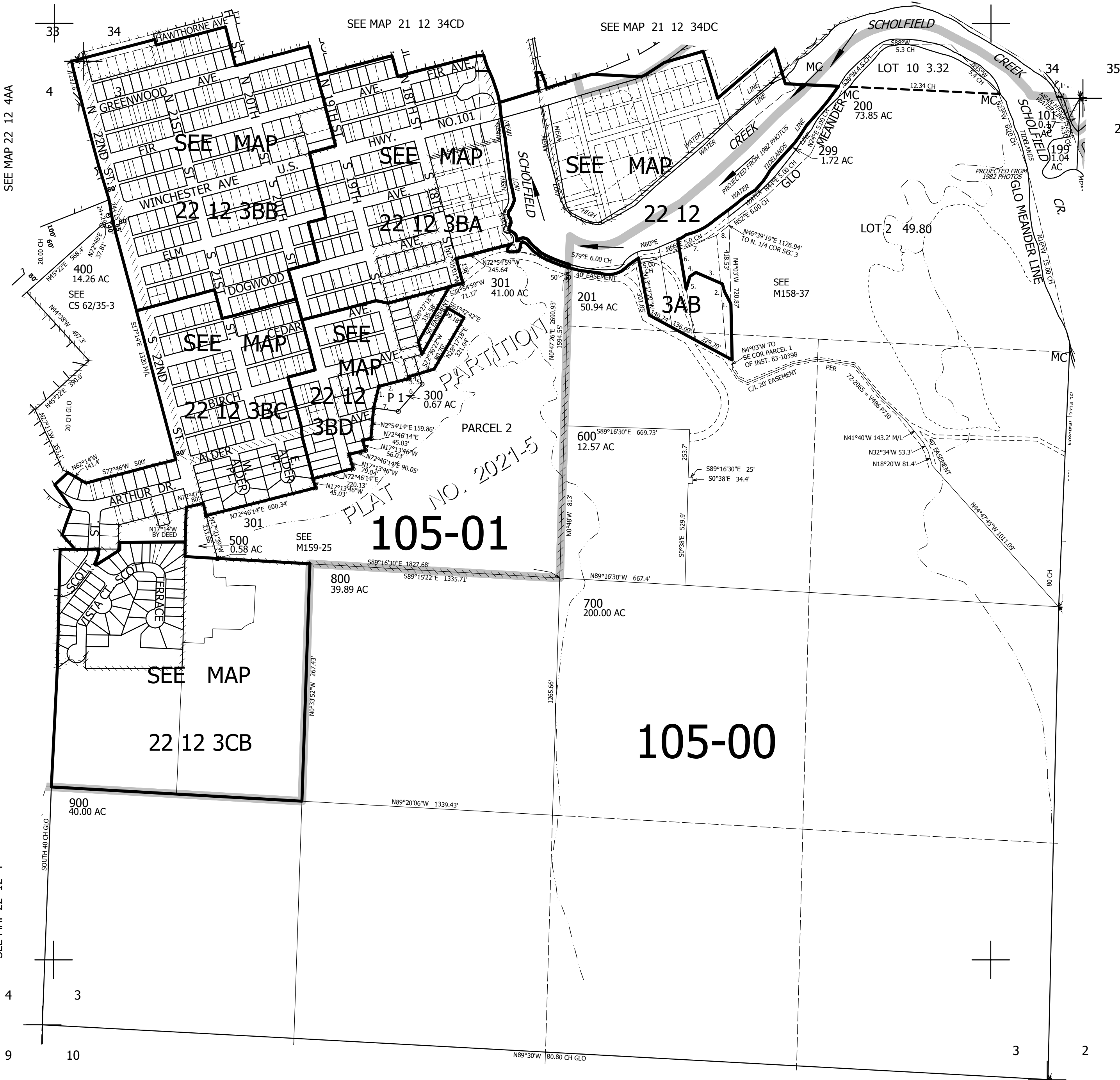
1" = 400'

SEE MAP 21 12 34DD

SEE MAP 21 12 34CC

SEE MAP 21 12 34CD

SEE MAP 21 12 34DC



CANCELLED NOS 100 700M1

TAXLOT 200

- 1. N30°48'16"W 74.53'
2. N16°00'09"W 41.71'
3. N69°06'26"W 154.78'
4. S53°22'34"W 39.2'
5. S13°11'14"W 77.51'
6. N12°06'00"W 211.57'
7. N64°35'00"E 216.03'
8. N47°41'07"E 85.31'

PP 2021-5 PARCEL 1

- 1. N12°03'38"E 121.27'
2. N72°32'38"E 160.66'
3. N17°23'38"W 10'
4. N72°36'22"E 59.28'
5. S17°51'30"E 56.15'
6. S38°42'12"W 192.98'
7. N85°33'38"W 129.13'

105-01

105-00

756,000

SEE MAP 22 12 00

SEE MAP 22 12 2

22 12 3 & INDEX REEDSPORT

3,968,000