

THIS MAP WAS PREPARED FOR ASSESSMENT PURPOSE ONLY.

NE1/4 NW1/4 SEC.2 T.22S. R.12W. W.M.
DOUGLAS COUNTY
1" = 100'

REVISED ON
7-20-10

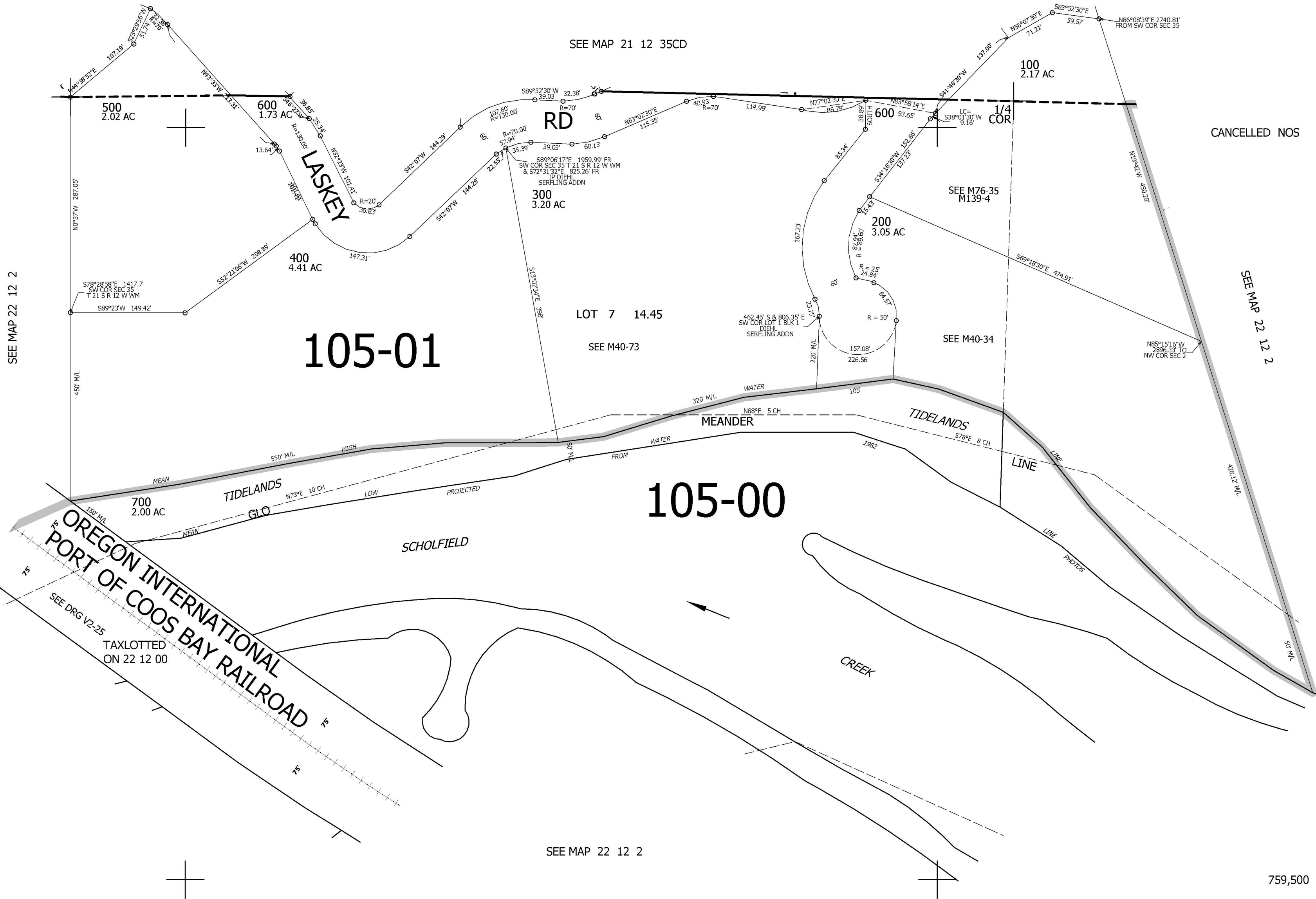
22 12 2BA
REEDSPORT

SEE MAP 21 12 35CD

SEE MAP 22 12 2

CANCELLED NOS

SEE MAP 22 12 2



1/16 COR

1/16 COR

3,971,000

759,500

22 12 2BA
REEDSPORT