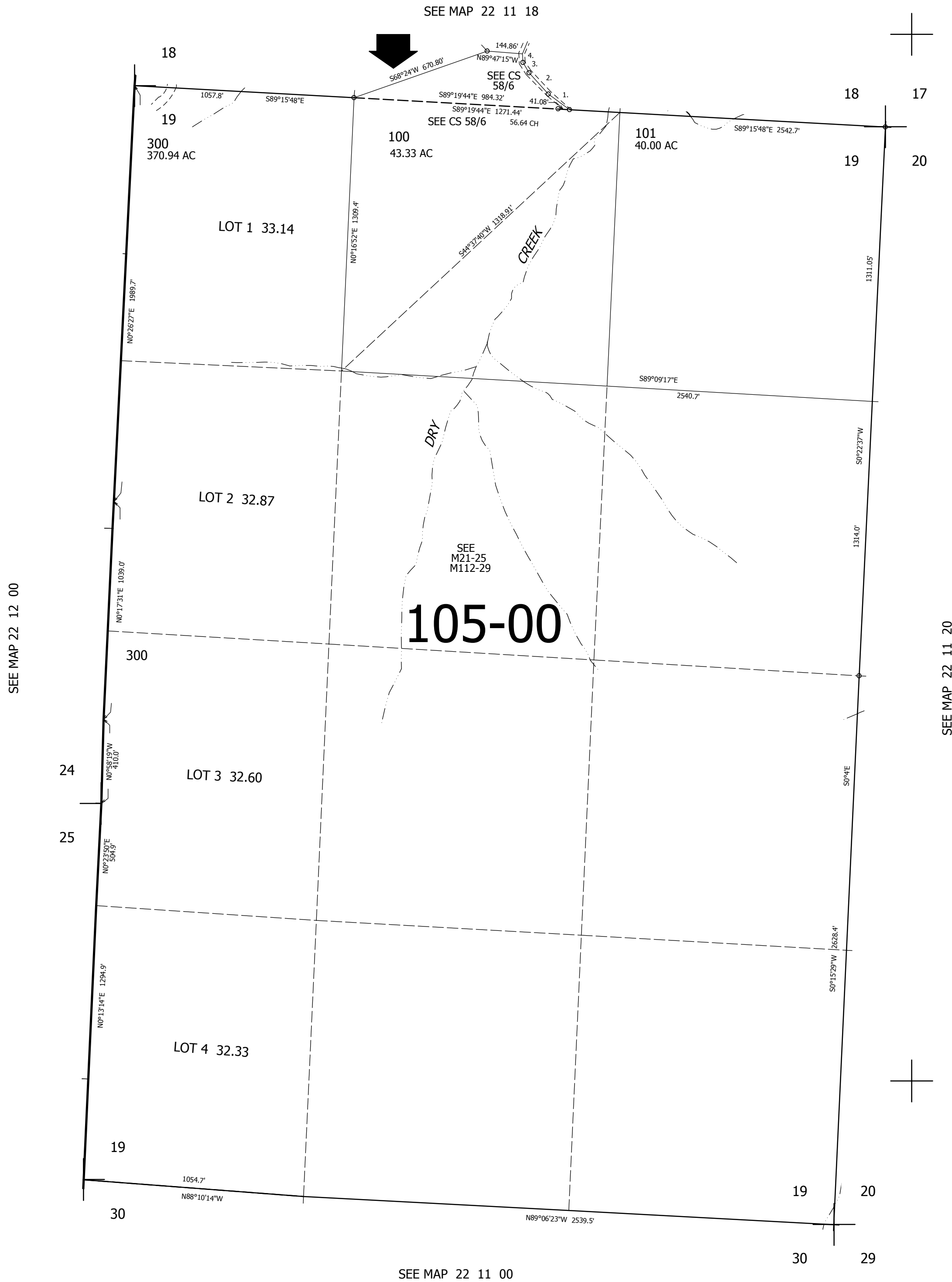


THIS MAP WAS PREPARED FOR
ASSESSMENT PURPOSE ONLY.

SEC.19 T.22S. R.11W. W.M.
DOUGLAS COUNTY
1" = 400'

REVISED ON
7-6-12

22 11 19



CANCELLED NOS
200

- PARCEL 100
- 1. N53°02'45"W 119.49'
 - 2. N46°00'15"W 138.94'
 - 3. N33°31'W 56.46'
 - 4. N10°04'30"W 43.60'

738,000

3,982,000

22 11 19