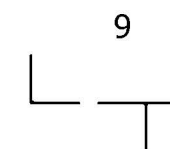
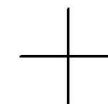
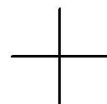


THIS MAP WAS PREPARED FOR ASSESSMENT PURPOSE ONLY.

SEC.17 T.22S. R.11W. W.M.  
DOUGLAS COUNTY  
1" = 400'

REVISED ON

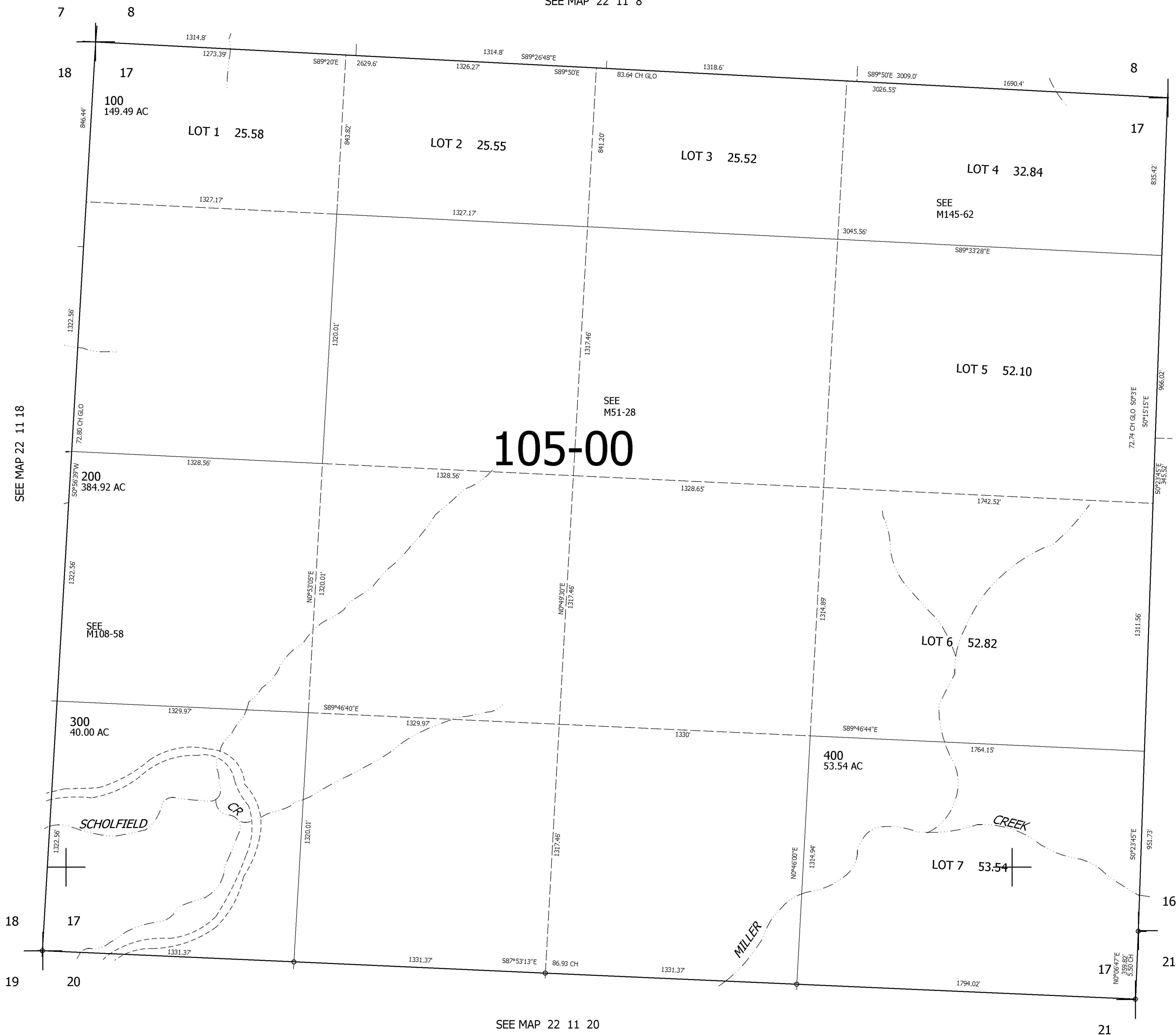
22 11 17



16

SEE MAP 22 11 8

CANCELLED NOS



SEE MAP 22 11 18

SEE MAP 22 11 00

105-00

743,000

SEE MAP 22 11 20

3,987,000

22 11 17