

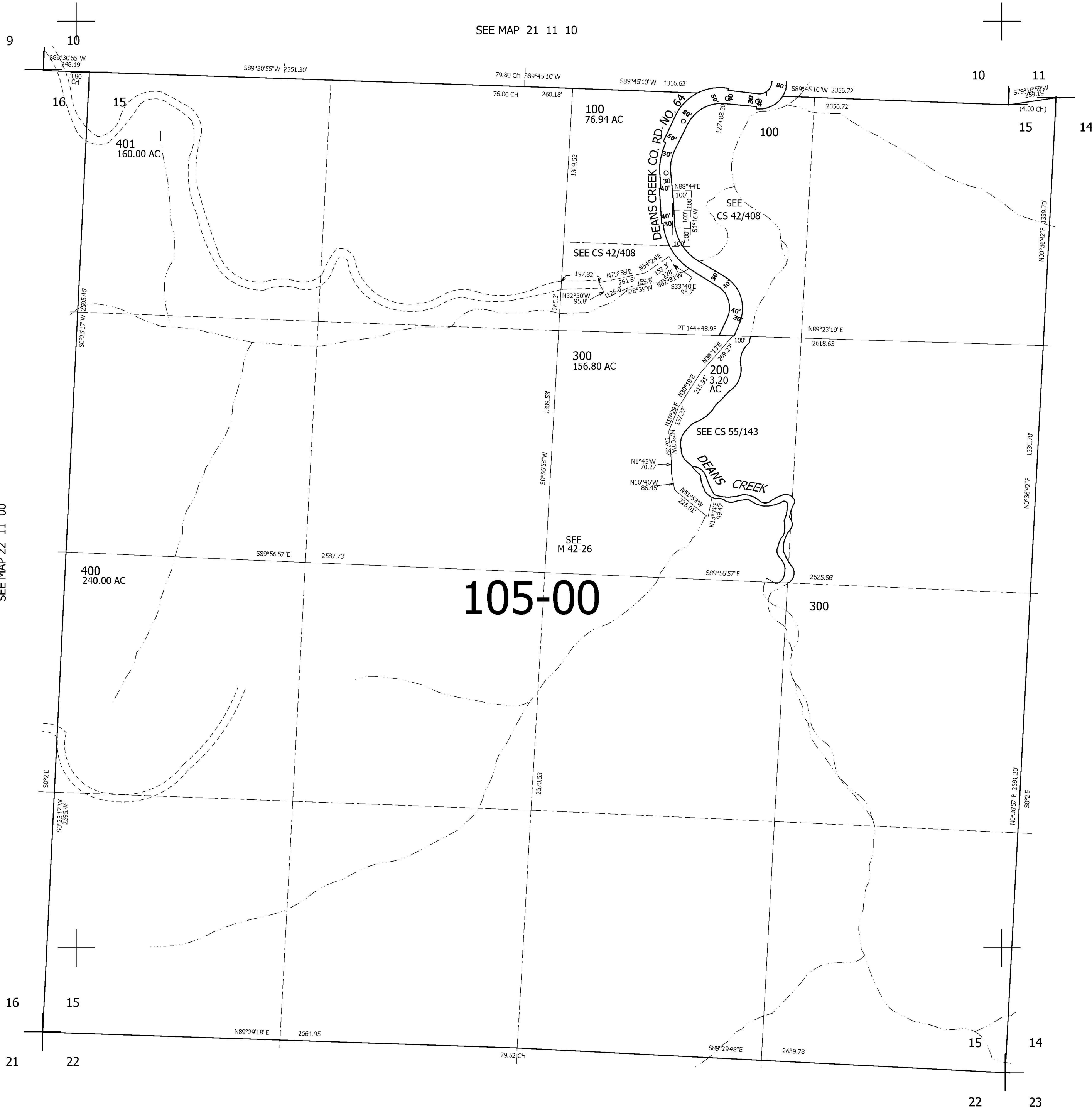
THIS MAP WAS PREPARED FOR ASSESSMENT PURPOSE ONLY.

SEC.15 T.22S. R.11W. W.M.
DOUGLAS COUNTY
1" = 400'

REVISED ON
4-18-08

22 11 15

SEE MAP 21 11 10



CANCELLED NOS

SEE MAP 22 11 00

SEE MAP 22 11 00

105-00

743,000

SEE MAP 22 11 00

3,998,000

22 11 15