

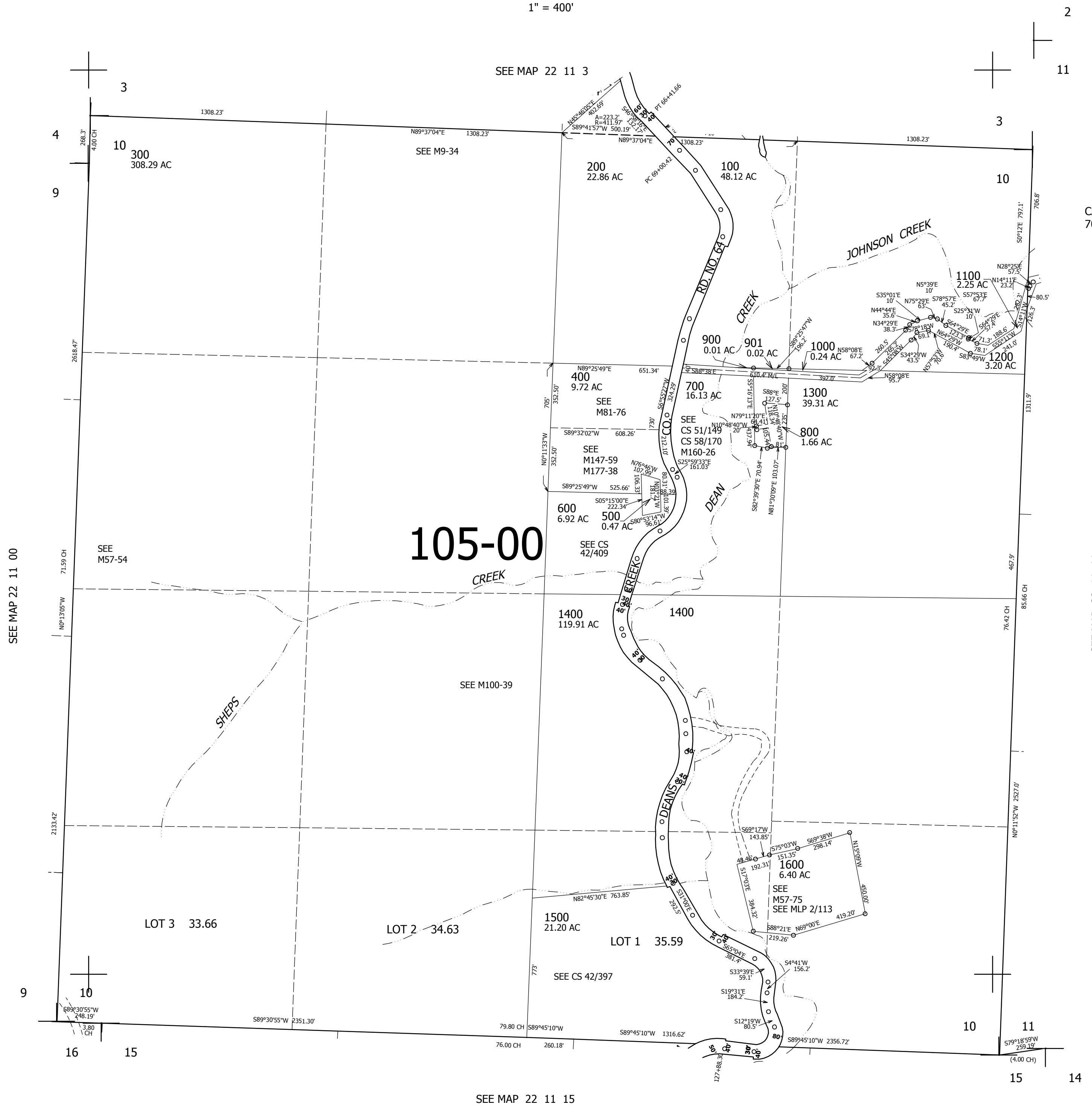
THIS MAP WAS PREPARED FOR ASSESSMENT PURPOSE ONLY.

SEC.10 T.22S. R.11W. W.M.
DOUGLAS COUNTY

1" = 400'

REVISED ON
12-8-09

22 11 10



CANCELLED NOS
701

748,000

SEE MAP 22 11 15

3,998,000

22 11 10