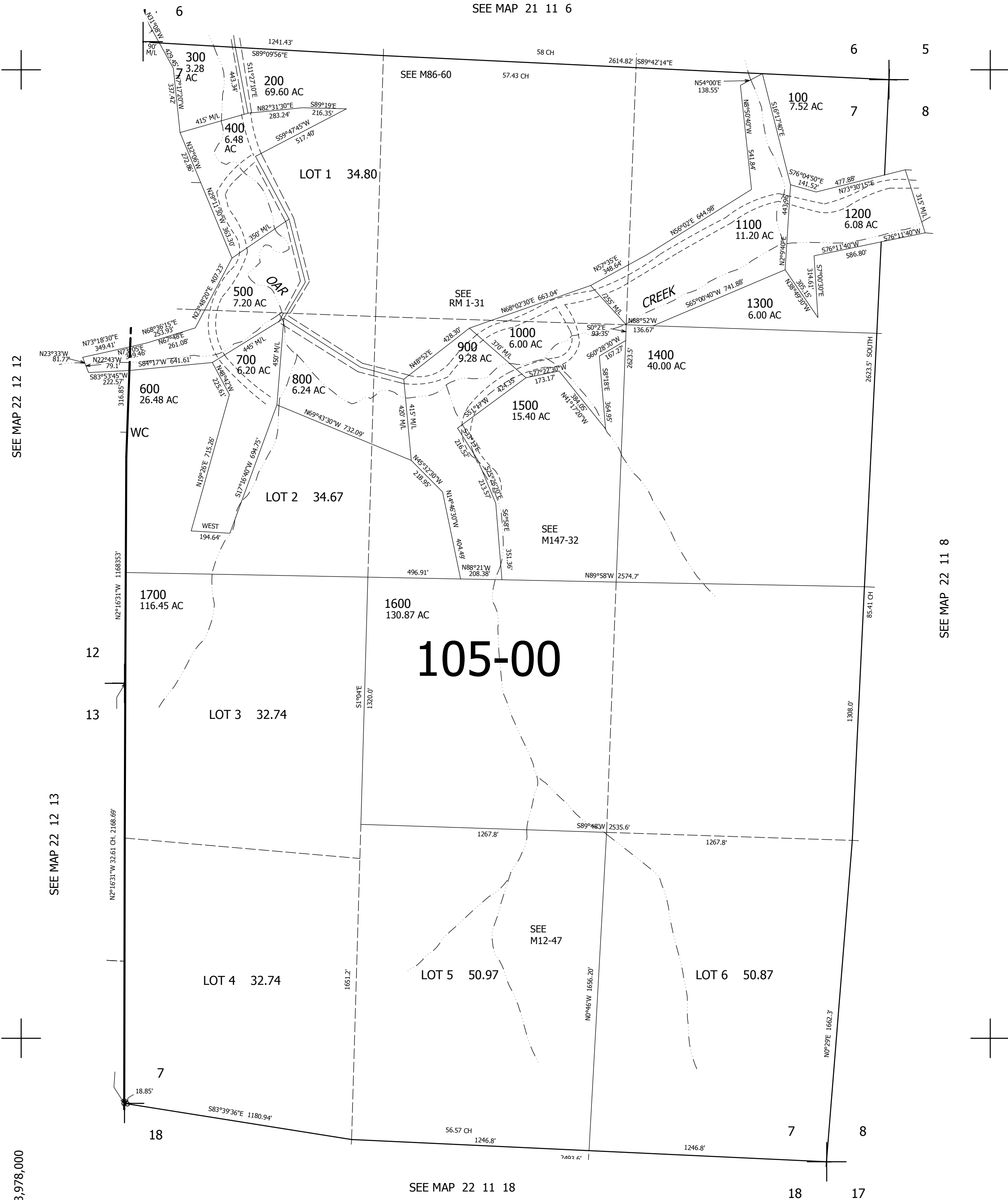


THIS MAP WAS PREPARED FOR ASSESSMENT PURPOSE ONLY.

SEC.7 T.22S. R.11W. W.M.  
DOUGLAS COUNTY  
1" = 400'

REVISED ON  
4-26-96

22 11 7



CANCELLED NOS  
100M1 200M1 600M1  
1300M1 1500M1 1600M1

748,000

3,978,000

22 11 7