

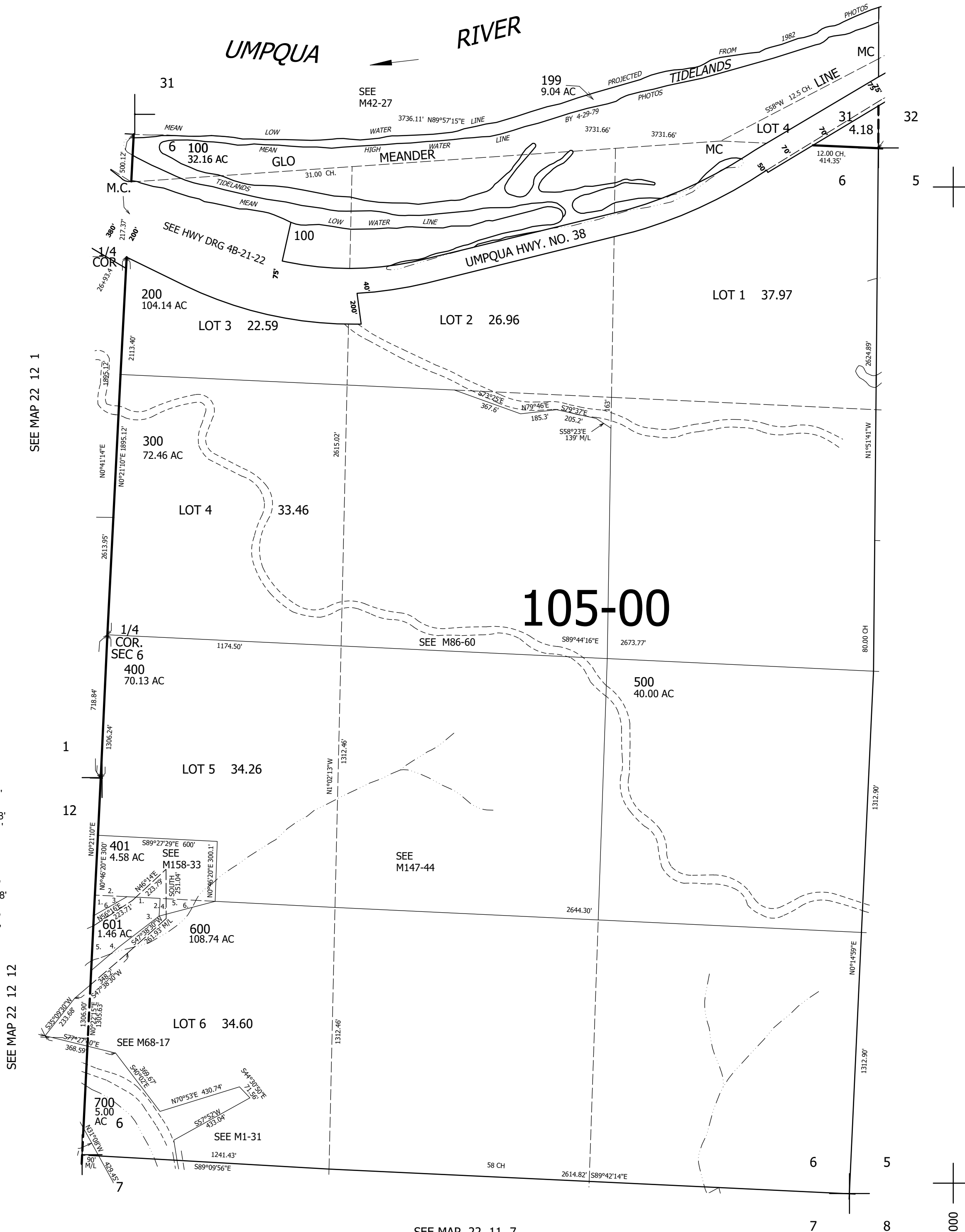
THIS MAP WAS PREPARED FOR ASSESSMENT PURPOSE ONLY.

SEC.6 T.22S. R.11W. W.M. DOUGLAS COUNTY
1" = 400'

REVISED ON 4-26-96

22 11 6

SEE MAP 21 11 00



CANCELLED NOS
602 603 200M1
300M1 600M1

- PARCEL 601
1. S89°27'29"E 173.81'
 2. S0°07'50"W 85.59'
 3. S47°19'15"W 260.58'
 4. N47°56'15"W 180.21'
 5. N0°22'45"E 281.30'

- PARCEL 401
1. N0°22'45"E 104.9'
 2. S89°26'16"E 149.29'
 3. N55°24'27"E 182.118'
 4. N0°08'49"E 85.76'
 5. S89°28'03"E 276.89'
 6. N73°17'24"E 289.32'

SEE MAP 22 12 12

SEE MAP 22 11 7

SEE MAP 22 11 5

753,000

3,983,000

22 11 6