

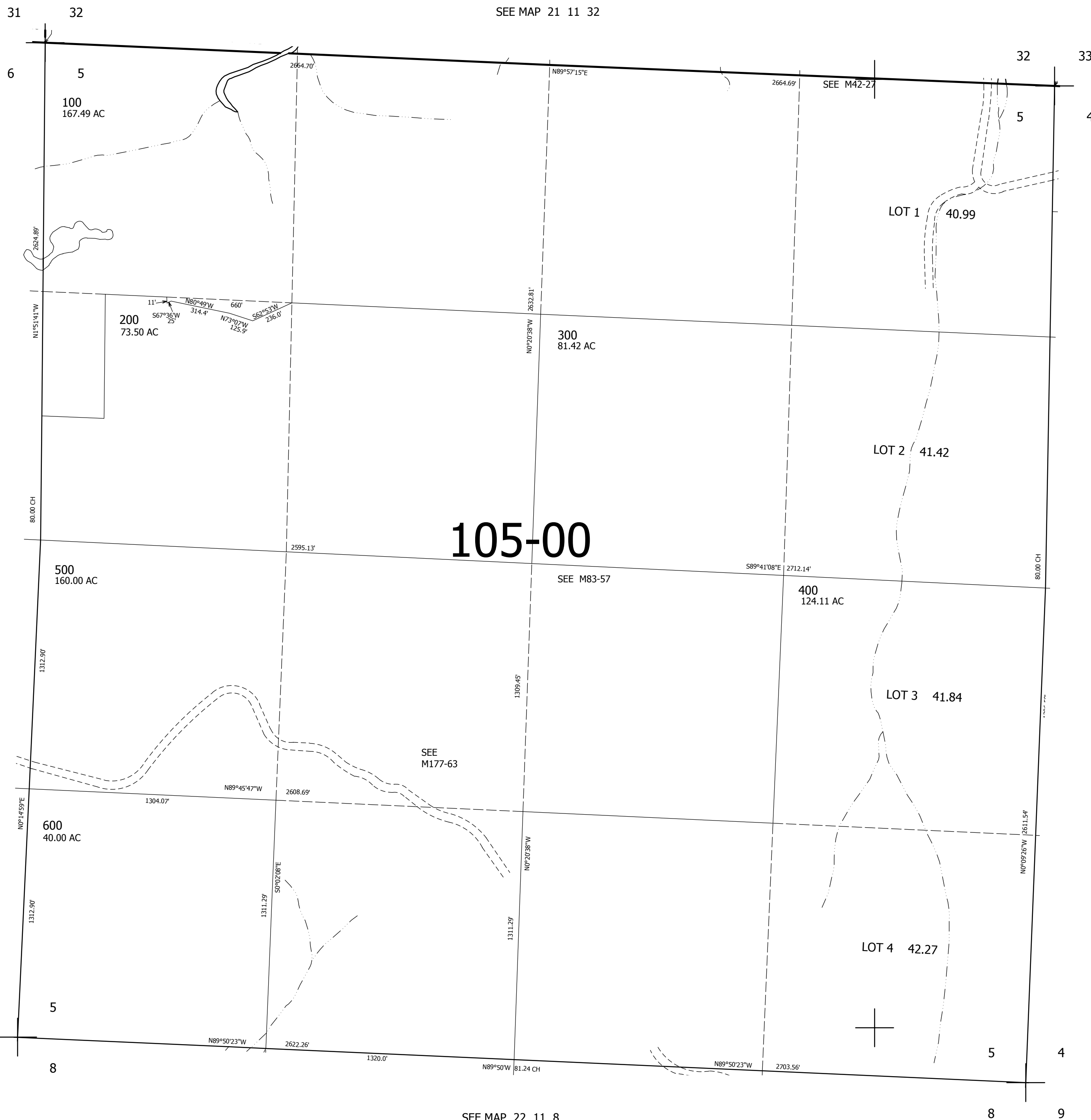
THIS MAP WAS PREPARED FOR ASSESSMENT PURPOSE ONLY.

SEC.5 T.22S. R.11W. W.M.
DOUGLAS COUNTY

1" = 400'

REVISED ON

22 11 5



CANCELLED NOS
100M1 200M1 400M1
600M1

SEE MAP 22 11 6

SEE MAP 21 11 32

SEE MAP 22 11 4

105-00

SEE M83-57

SEE M177-63

3,987,000

753,000

SEE MAP 22 11 8

22 11 5