

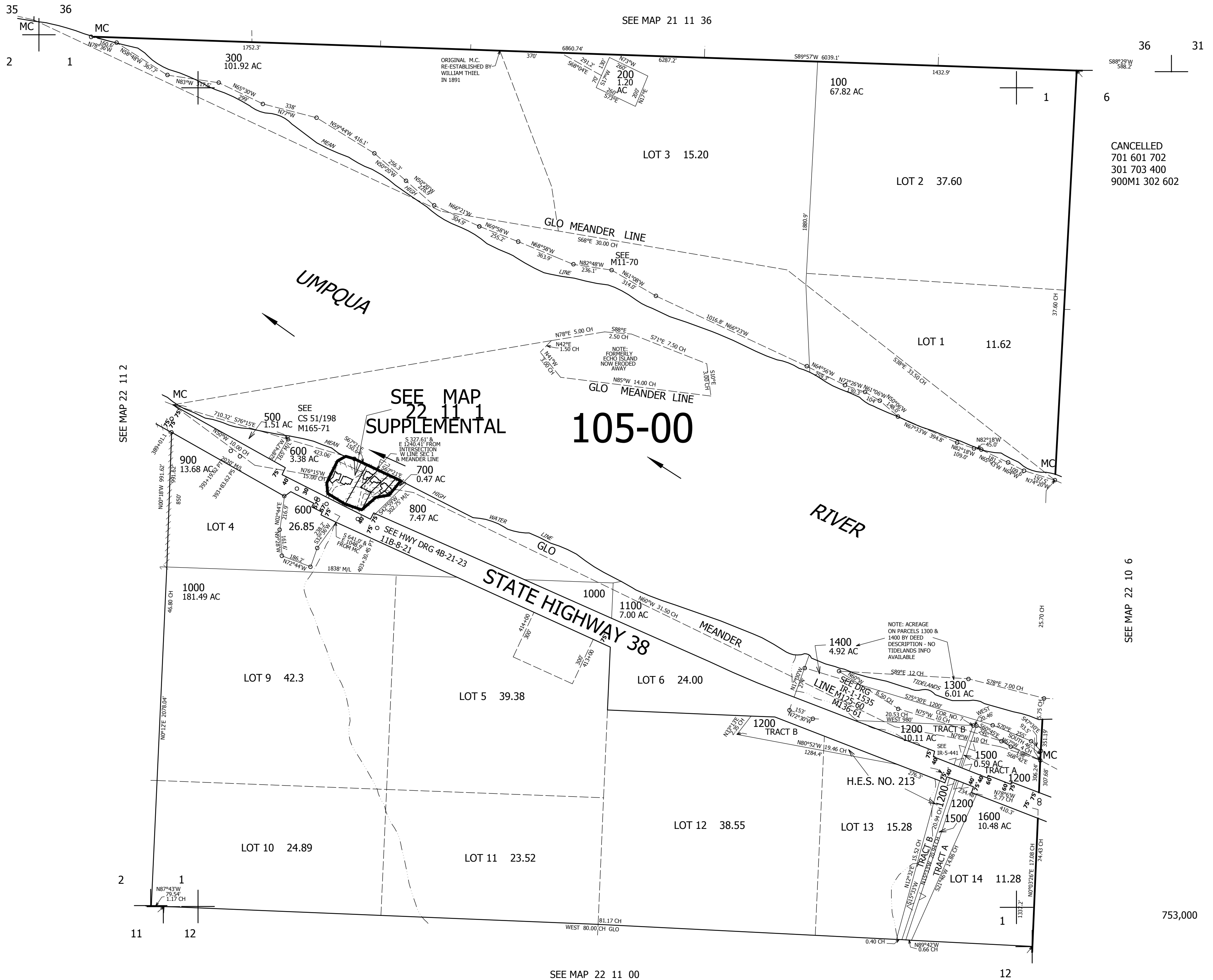
THIS MAP WAS PREPARED FOR ASSESSMENT PURPOSE ONLY.

SEC.1 T.22S. R.11W. W.M. DOUGLAS COUNTY

REVISED ON 11-21-18

22 11 1

1" = 400'



CANCELLED
701 601 702
301 703 400
900M1 302 602

SEE MAP 22 10 6

753,000

4,009,000

22 11 1

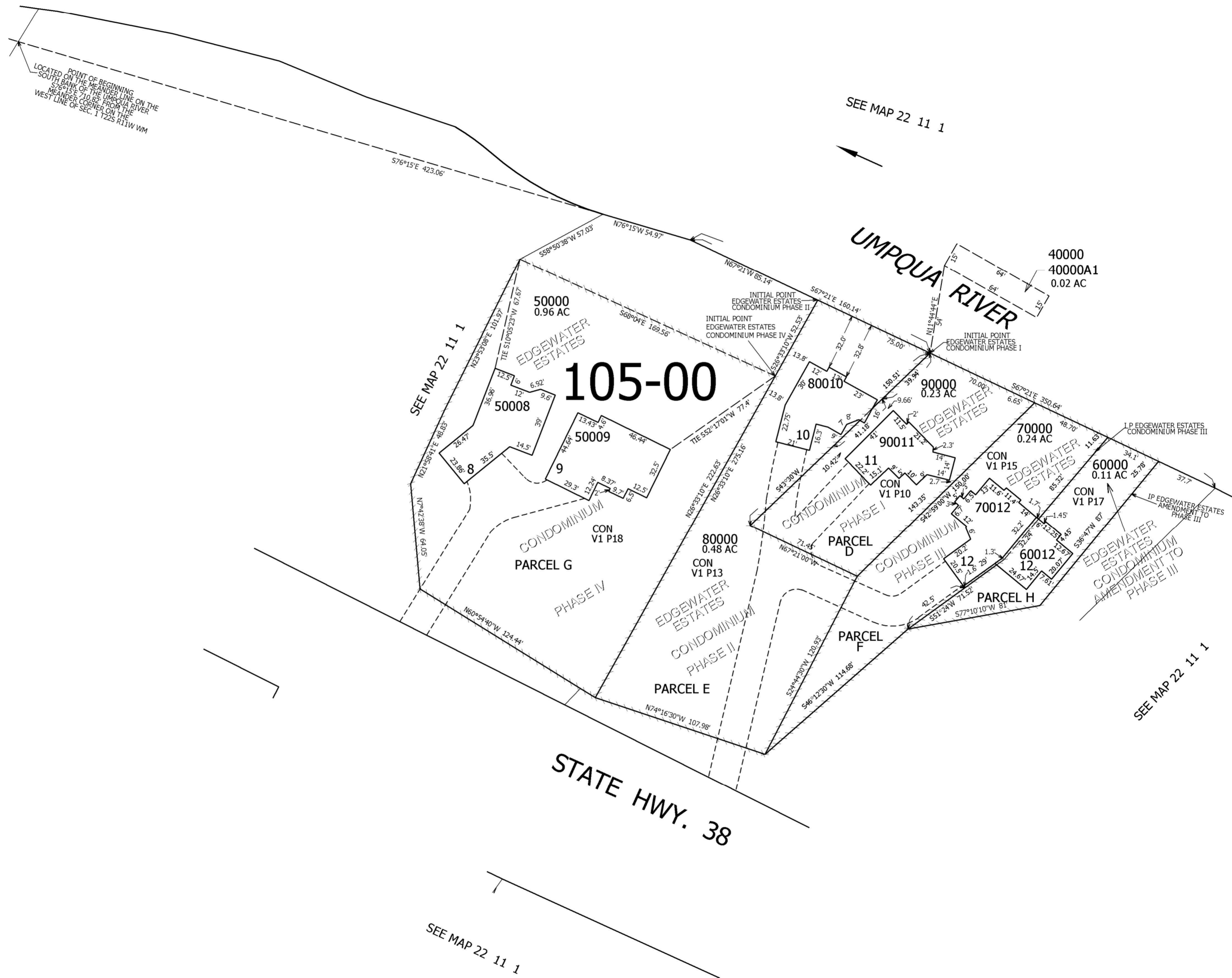
THIS MAP WAS PREPARED FOR
ASSESSMENT PURPOSE ONLY.

SUPPLEMENTAL MAP
NW1/4 SEC.1 T.22S. R.11W. W.M.
DOUGLAS COUNTY
1" = 50'

REVISED ON
8-17-16

22 11 1
SUPPLEMENTAL

CANCELLED NO'S



22 11 1
SUPPLEMENTAL

