

THIS MAP WAS PREPARED FOR ASSESSMENT PURPOSE ONLY.

T.22S. R.11W. W.M. DOUGLAS COUNTY

REVISED ON 4-18-08

22 11 00 & INDEX

1" = 2000'

SEE MAP 21 11 00

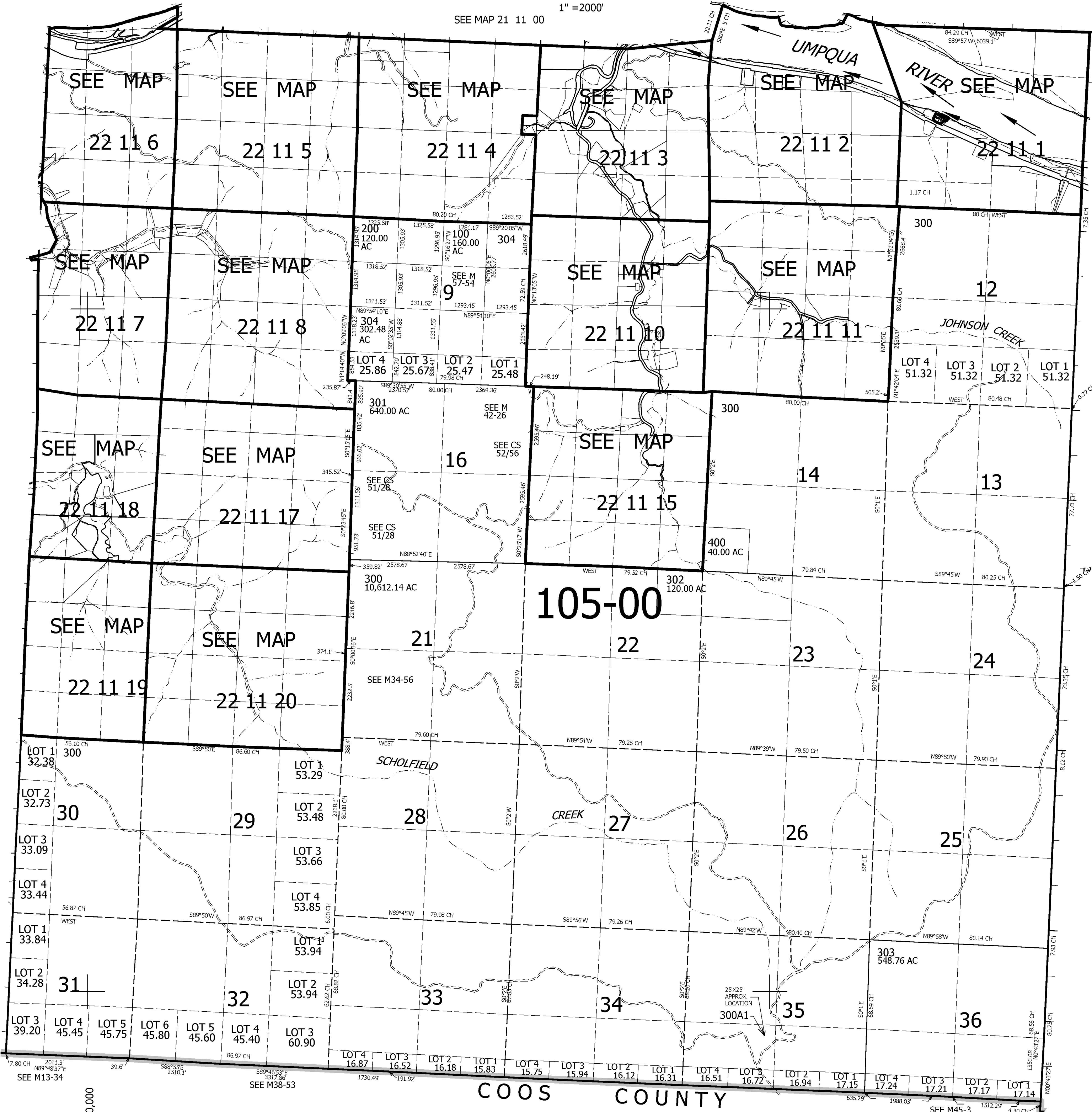
CANCELLED NOS 100M1

SEE MAP 22 12 00

SEE MAP 22 10 00

730,000

22 11 00 & INDEX



3,980,000

COOS COUNTY

SEE M45-3