

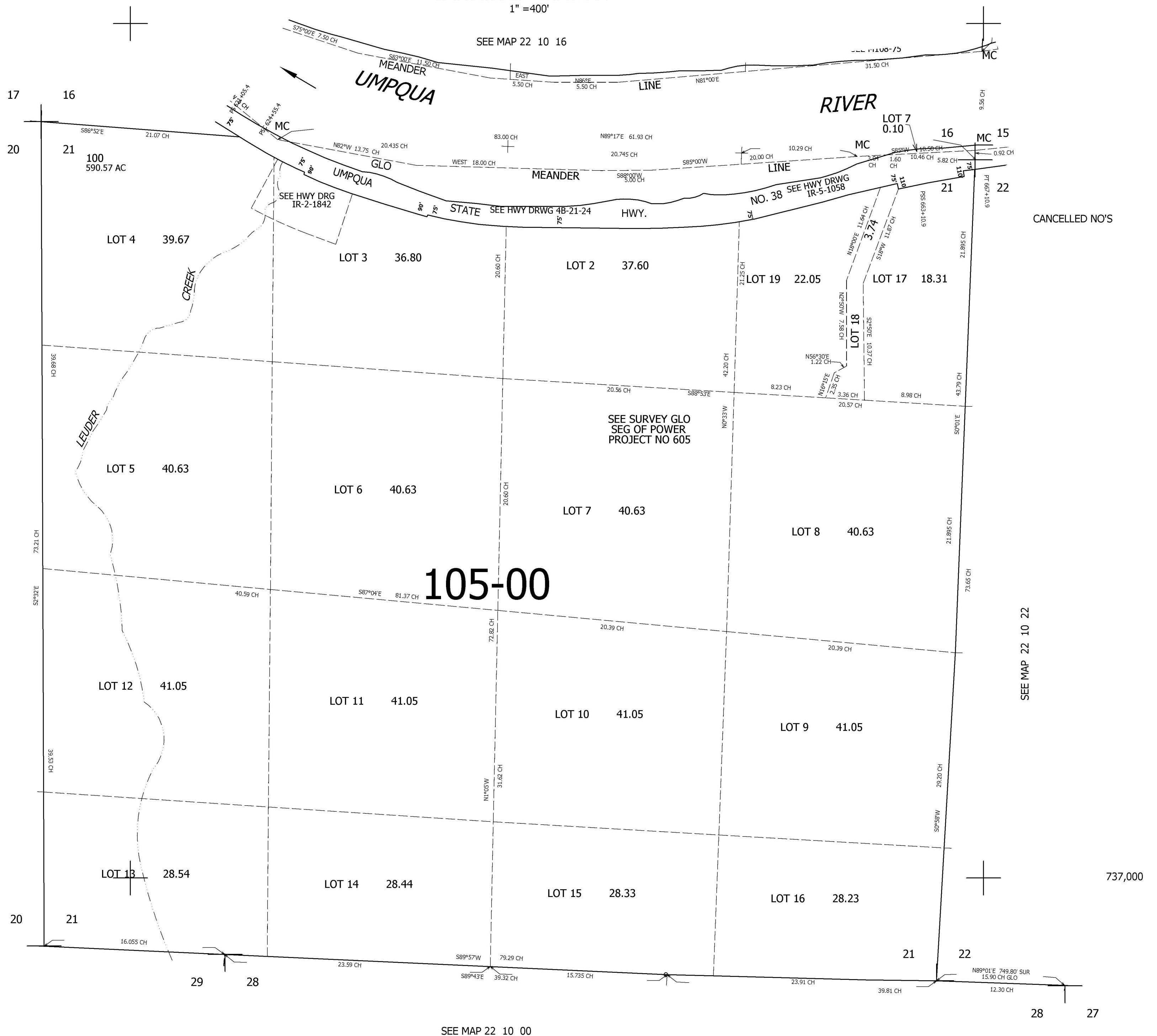
THIS MAP WAS PREPARED FOR ASSESSMENT PURPOSE ONLY.

SEC.21 T.22S. R.10W. W.M.
DOUGLAS COUNTY

1" = 400'

REVISED ON

22 10 21



CANCELLED NO'S

SEE MAP 22 10 00

SEE MAP 22 10 22

105-00

737,000

SEE MAP 22 10 00

4,025,000

22 10 21