

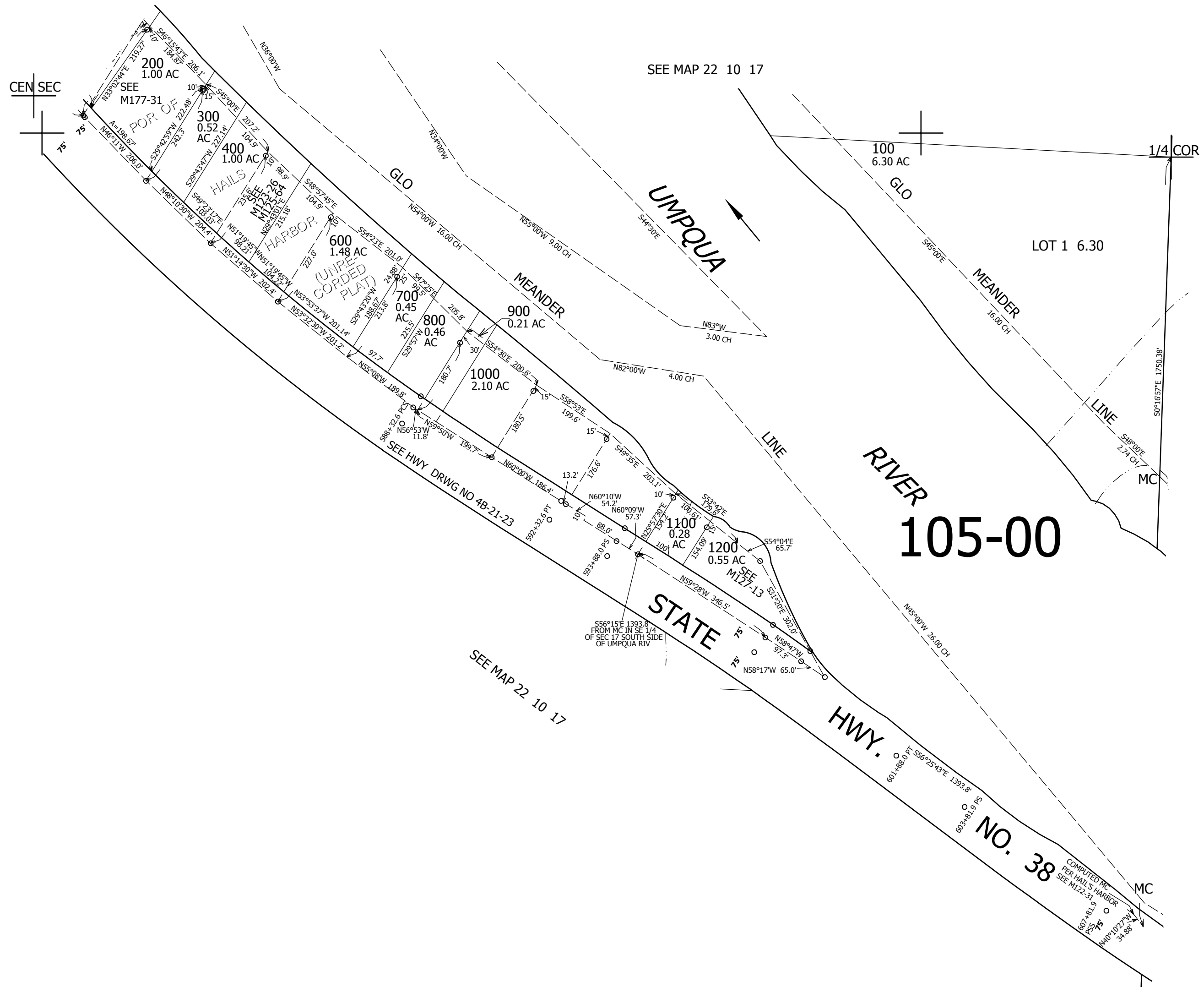
THIS MAP WAS PREPARED FOR ASSESSMENT PURPOSE ONLY.

SE1/4 SEC.17 T.22S. R.10W. W.M.
DOUGLAS COUNTY

1" = 200'

REVISED ON
5-12-20

22 10 17D



CANCELLED NO'S
201

SEE MAP 22 10 00

742,000

1/4 COR

17	16
20	21

4,019,000

22 10 17D