

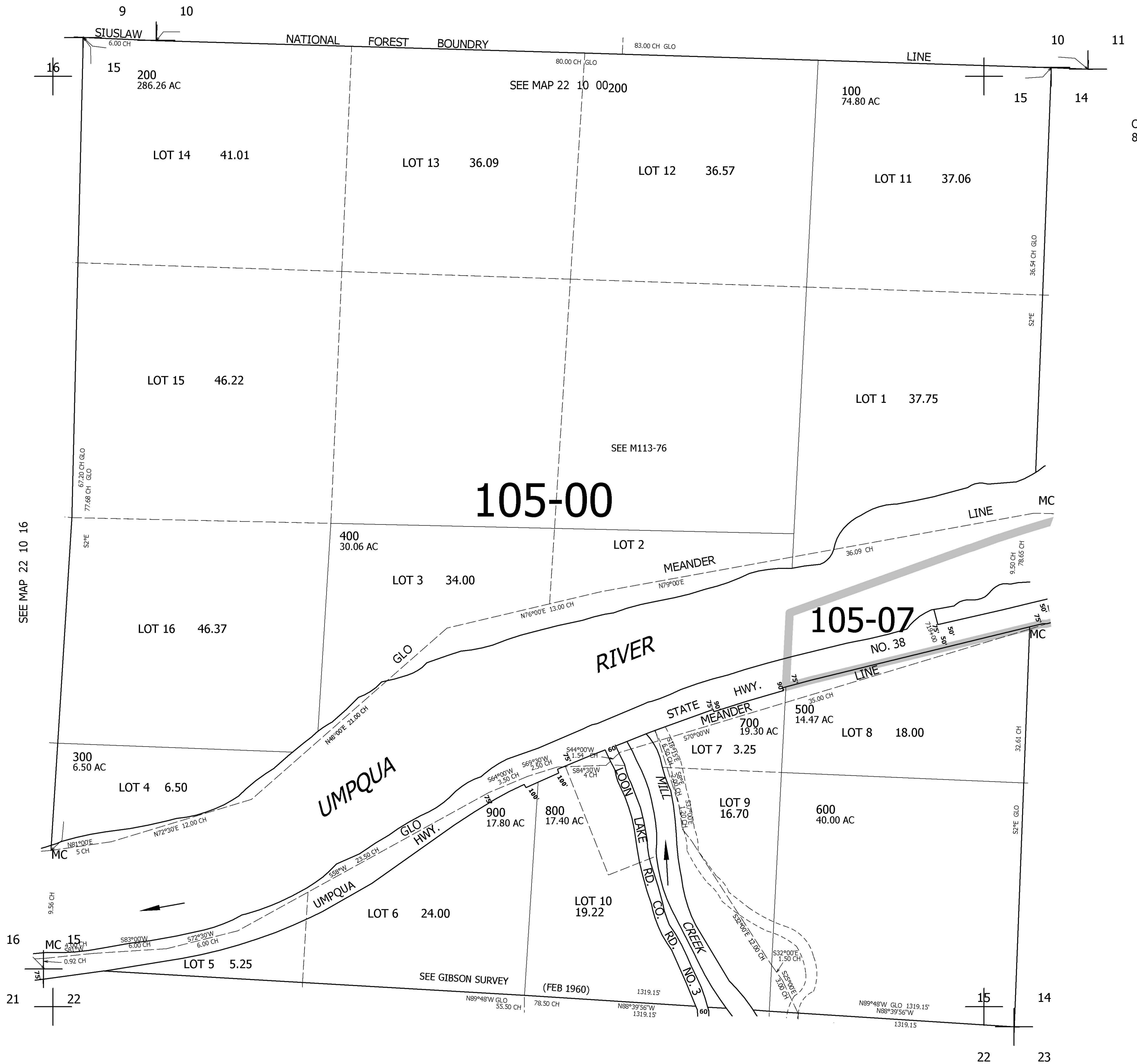
THIS MAP WAS PREPARED FOR ASSESSMENT PURPOSE ONLY.

22 10 15

SEC.15 T.22S. R.10W. W.M.
DOUGLAS COUNTY

REVISED ON

1" = 400'



CANCELLED NO'S
800M1

SEE MAP 22 10 14

741,000

22 10 15

SEE MAP 22 10 22

4,030,000