

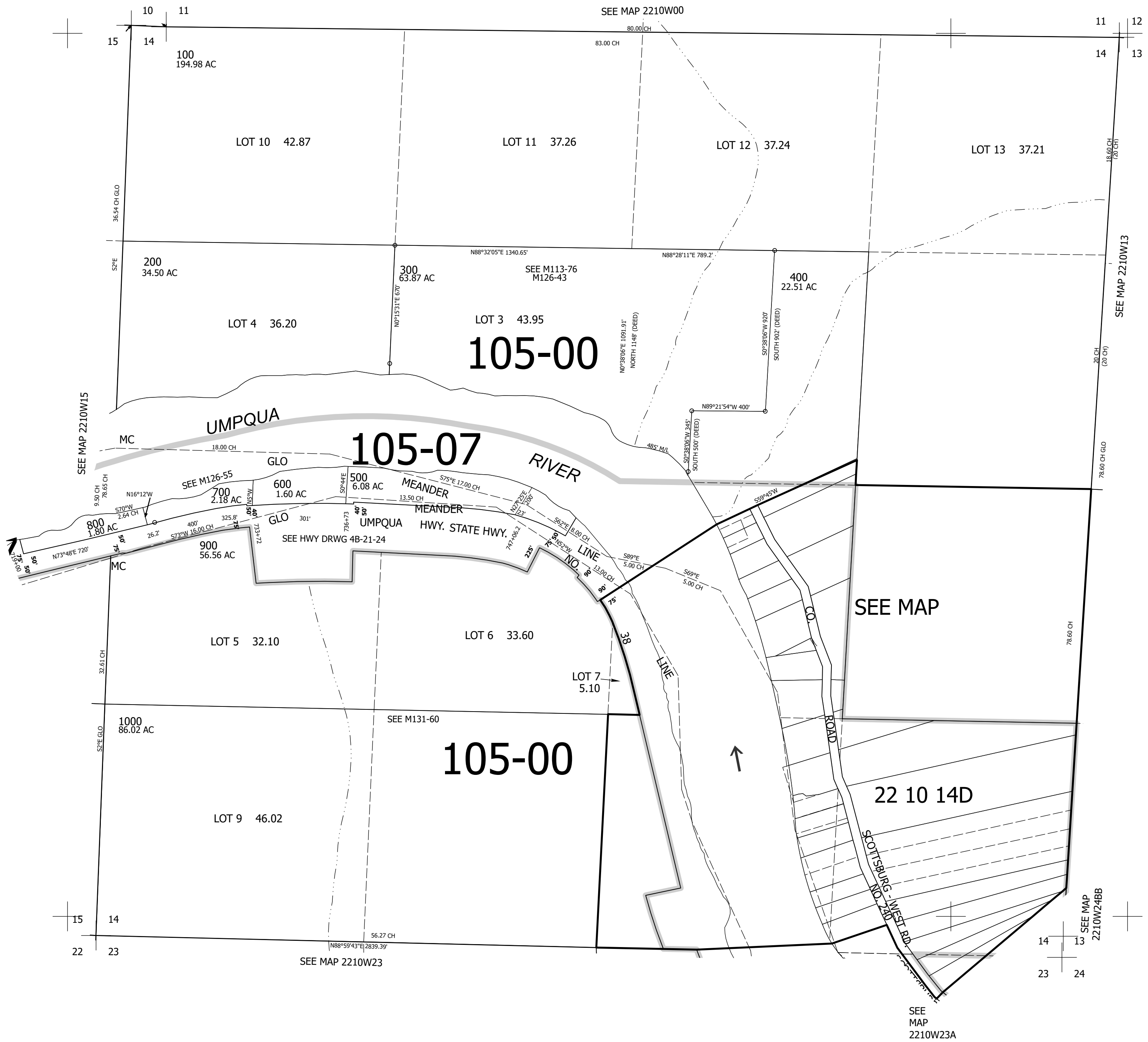
THIS MAP WAS PREPARED FOR ASSESSMENT PURPOSE ONLY.

Upper Left:
123°52'25"W 43°39'59"N
4028892E 746804N ft

SEC.14 T.22S. R.10W. W.M.
DOUGLAS COUNTY
1" = 400'

Date Exported 2024-10-15

CANCELLED NOS:
300M1



SEE MAP
2210W24BB

SEE
MAP
2210W23A

Lower Right:
123°50'34"W 43°38'54"N
4036741E 739849N ft