

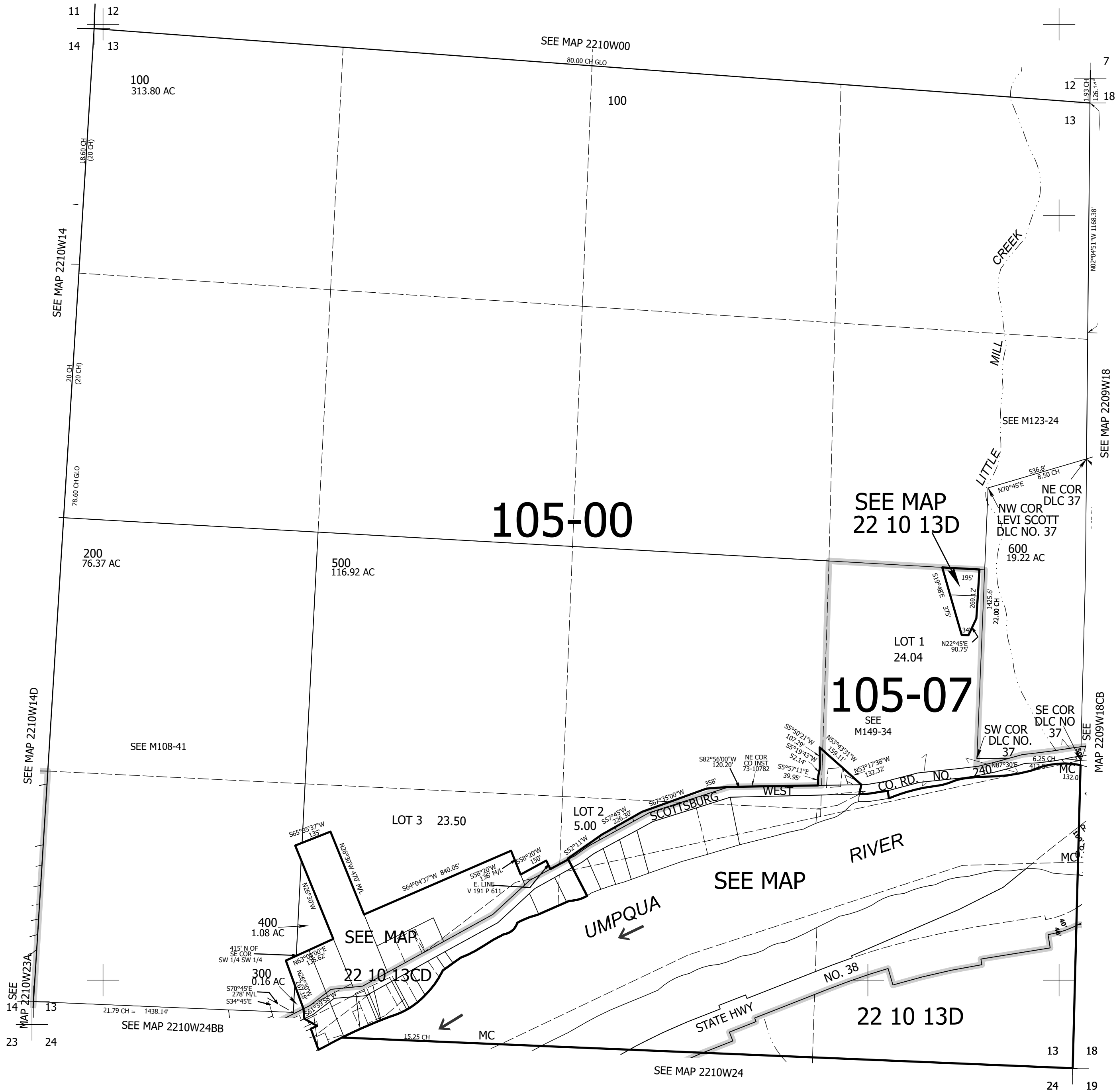
THIS MAP WAS PREPARED FOR ASSESSMENT PURPOSE ONLY.

Upper Left:
123°51'9"W 43°40'1"N
4034481E 746787N ft

SEC.13 T.22S. R.10W. W.M.
DOUGLAS COUNTY
1" = 400'

Date Exported 2024-10-15

CANCELLED NOS:
200M1 600M1 501
502



Lower Right:
123°49'18"W 43°38'56"N
4042330E 739832N ft