

SEC.6 T.22S. R.10W. W.M.
DOUGLAS COUNTY

REVISED ON
4-5-18

22 10 6
& INDEX

THIS MAP WAS PREPARED FOR
ASSESSMENT PURPOSE ONLY.

1" = 400'

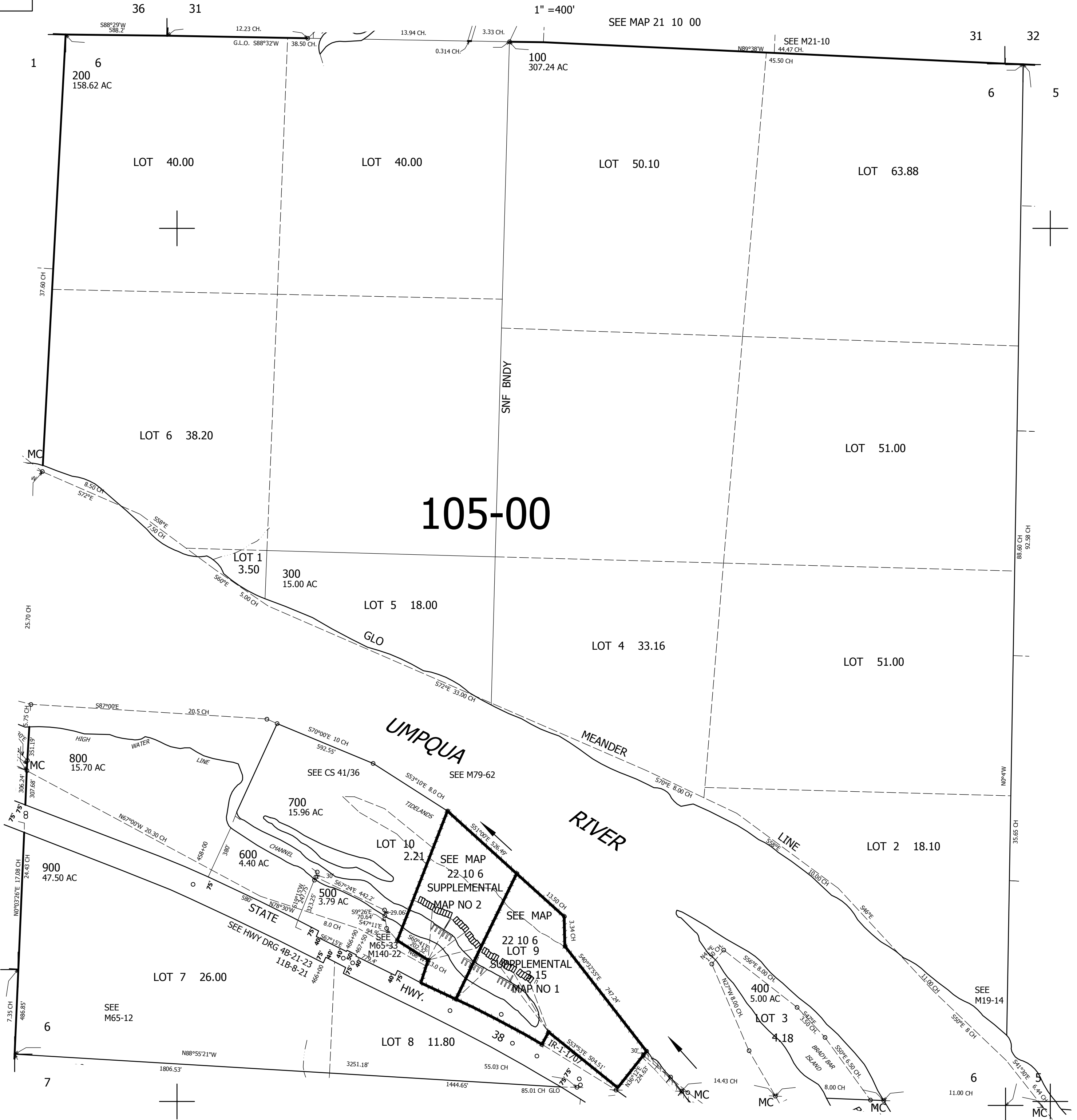
SEE MAP 21 10 00

SEE MAP 22 11 00

CANCELLED NO'S

757,000

SEE MAP 22 10 00



105-00

UMPQUA RIVER

22 10 6
& INDEX

4,010,000

SEE MAP 22 10 7

SEE MAP 22 10 7AB

SEE MAP 22 10 7

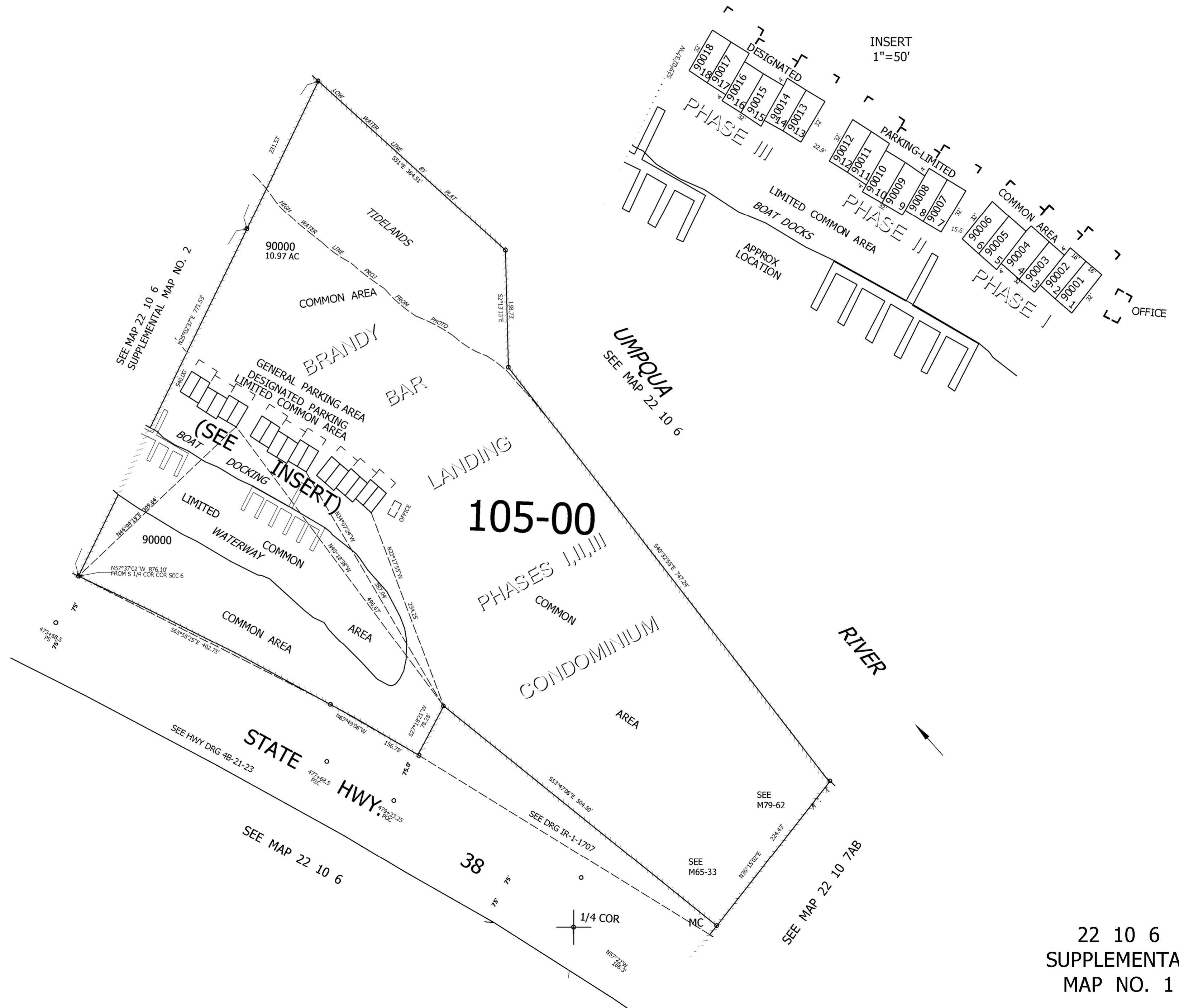
THIS MAP WAS PREPARED FOR ASSESSMENT PURPOSE ONLY.

SUPPLEMENTAL MAP NO. 1
IN
SEC.6 T.22S. R.10W. W.M.
DOUGLAS COUNTY
CONDOMINIUM
1"=100'

REVISED ON

22 10 6
SUPPLEMENTAL
MAP NO. 1

CANCELLED NO'S



INSERT
1"=50'

SEE MAP 22 10 6
SUPPLEMENTAL MAP NO. 2

UMPOUA
SEE MAP 22 10 6

STATE HWY 38
SEE HWY DRG 4B-21-23
SEE MAP 22 10 6

SEE MAP 22 10 7AB

22 10 6
SUPPLEMENTAL
MAP NO. 1

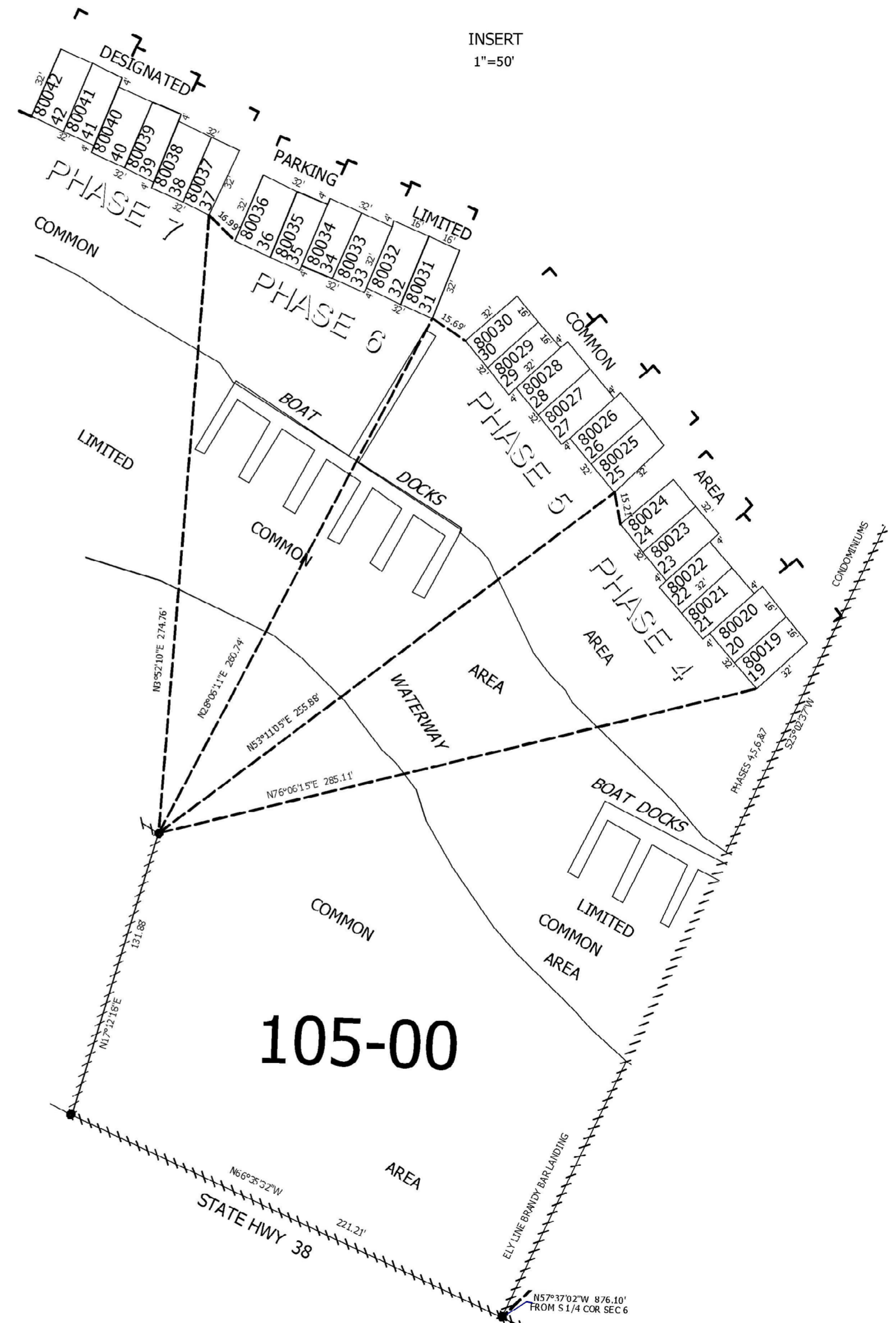
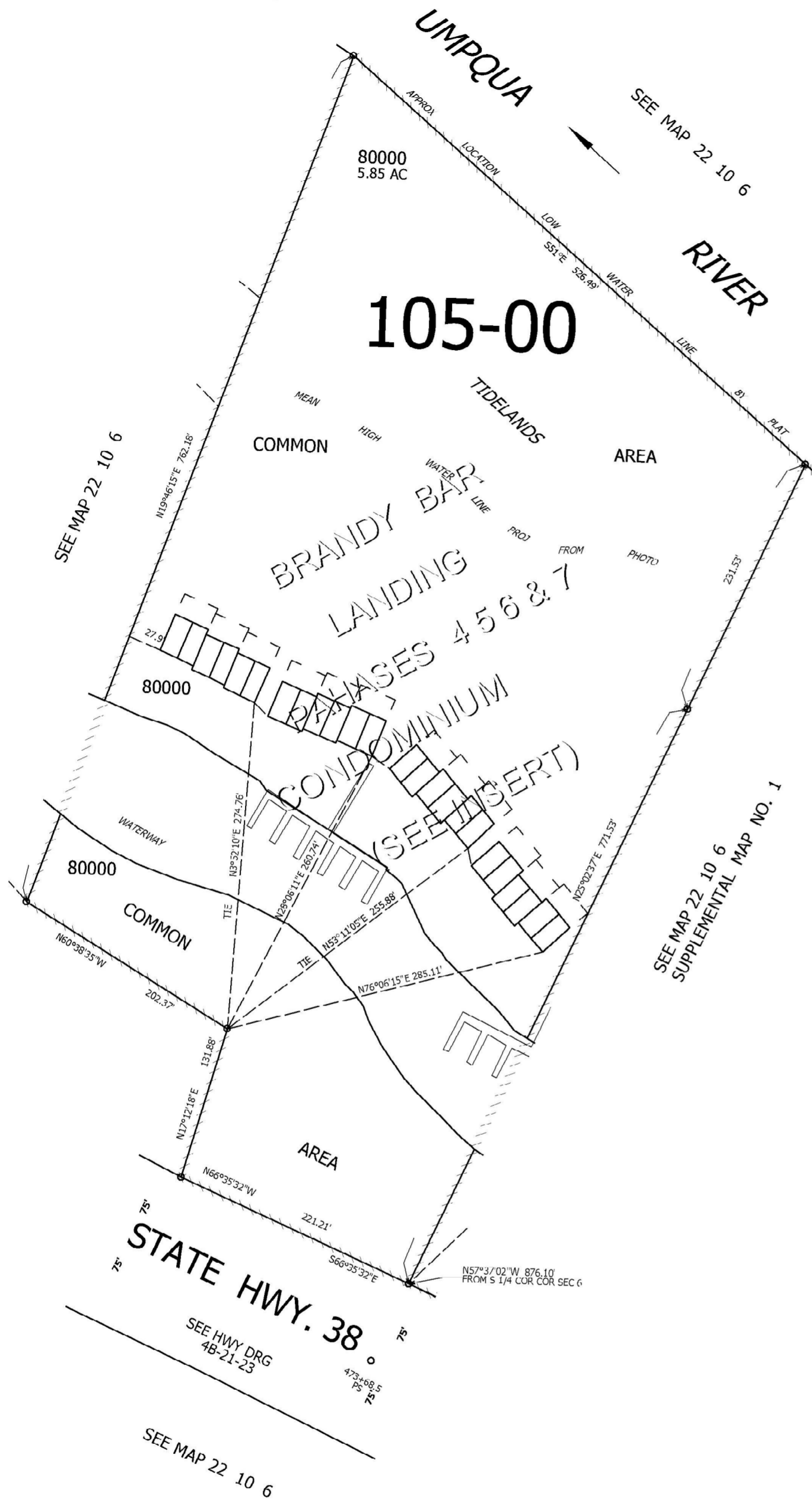
THIS MAP WAS PREPARED FOR ASSESSMENT PURPOSE ONLY.

SUPPLEMENTAL MAP NO. 2
IN
SEC.6 T.22S. R.10W. W.M.
DOUGLAS COUNTY
CONDOMINIUM
1"=100'

REVISED ON

22 10 6
SUPPLEMENTAL
MAP NO. 2

CANCELLED NO'S



INSERT
1"=50'

22 10 6
SUPPLEMENTAL
MAP NO. 2