

THIS MAP WAS PREPARED FOR ASSESSMENT PURPOSE ONLY.

NE1/4 SEC.18 T.22S. R.9W. W.M.
DOUGLAS COUNTY
1" = 200'

REVISED ON
4-23-96

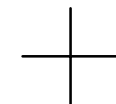
22 9 18A

SEE MAP 22 9 7

1/4 COR

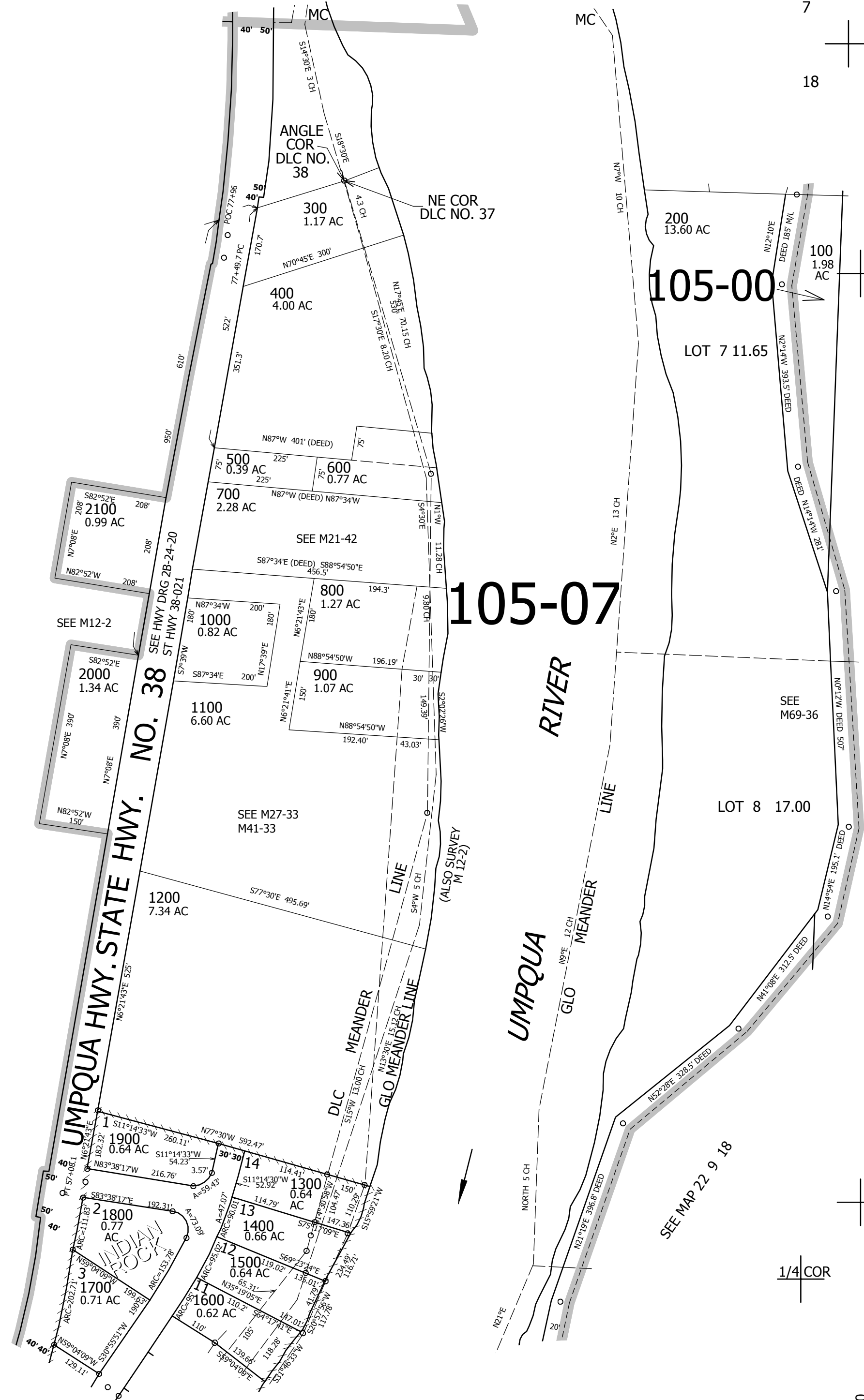
7 8
18 17

CANCELLED NO'S
100M1



SEE MAP 22 9 18

SEE MAP 22 8 17



CEN SEC

SEE MAP 22 9 18

1/4 COR

743,000

SEE MAP 22 9 18DB

4,047,000

22 9 18A