

THIS MAP WAS PREPARED FOR ASSESSMENT PURPOSE ONLY.

# NE1/4 SEC.17 T.22S. R.9W. W.M. DOUGLAS COUNTY

REVISED ON  
11-15-21

22 9 17A

1" = 200'

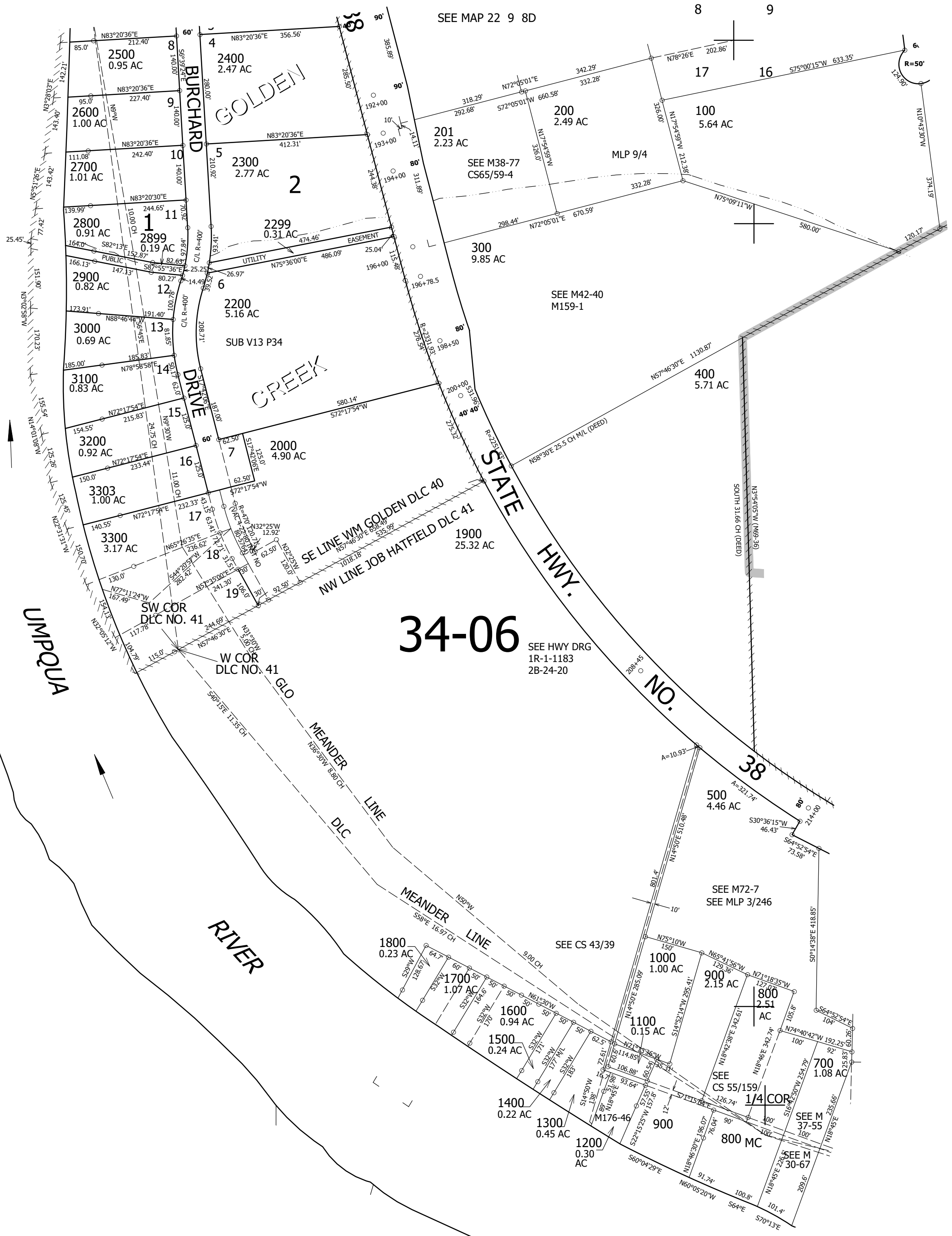
1/4 COR

SEE MAP 22 9 17

CEN SEC

4,052,000

SEE MAP 22 9 17



SEE MAP 22 9 8D

8 9

745,000

CANCELLED NO'S  
3301 3302 3401  
3400 2100 600

SEE MAP 22 9 16

22 9 17A