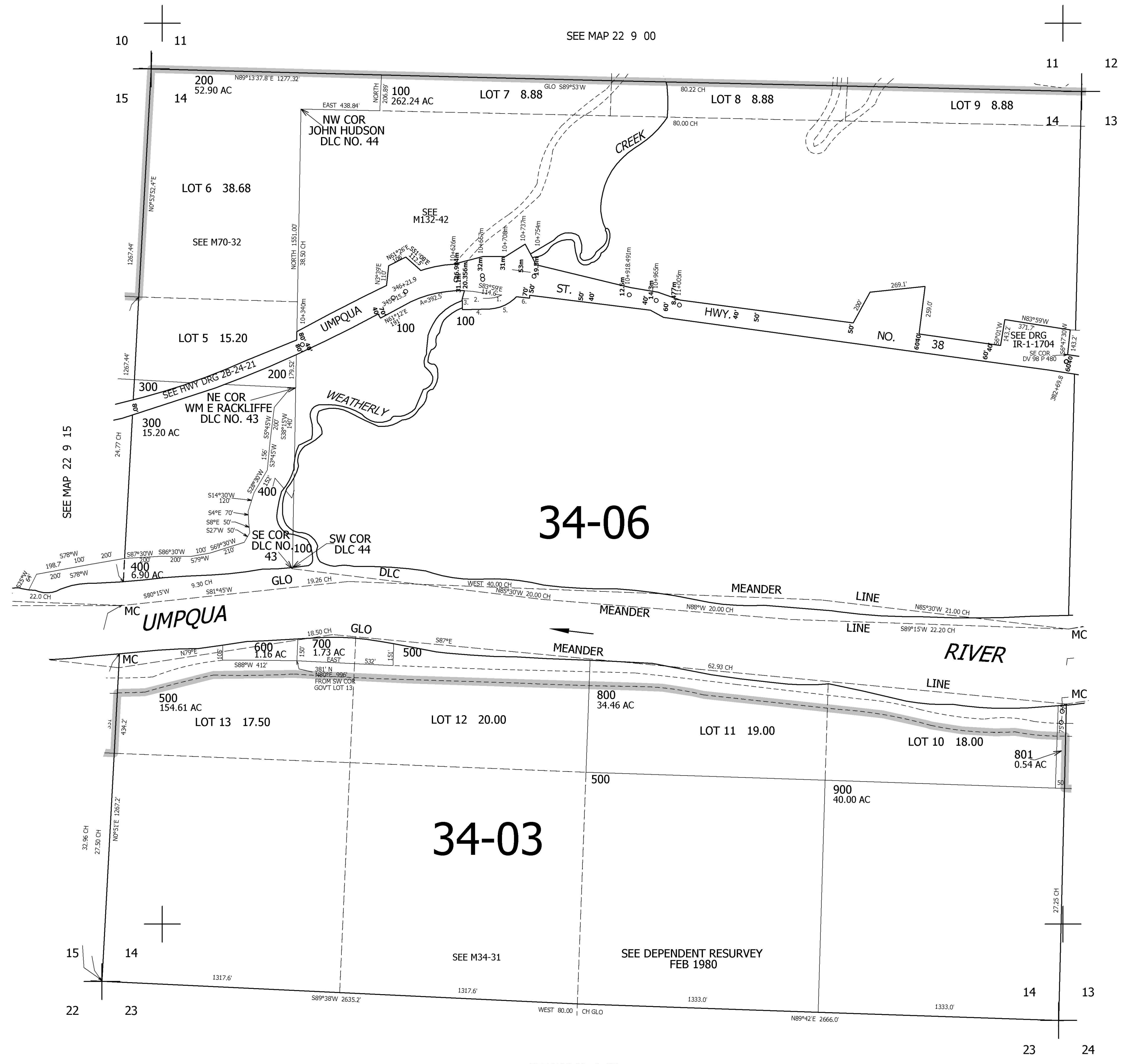


THIS MAP WAS PREPARED FOR ASSESSMENT PURPOSE ONLY.

SEC.14 T.22S. R.9W. W.M. DOUGLAS COUNTY 1" = 400'

REVISED ON 5-1-98

22 9 14



CANCELLED NO'S 400M1

- PARCEL 100
1. R=149.1' LC=57°5'10"30"W 68'
 2. S88°21'W 152.9'
 3. S1°39'E 60'
 4. N88°21'E 152.9'
 5. R=209.1' A=168°
 6. S83°59'E 74'

SEE MAP 22 8 13

740,000

SEE MAP 22 9 00

4,068,000

22 9 14