

THIS MAP WAS PREPARED FOR ASSESSMENT PURPOSE ONLY.

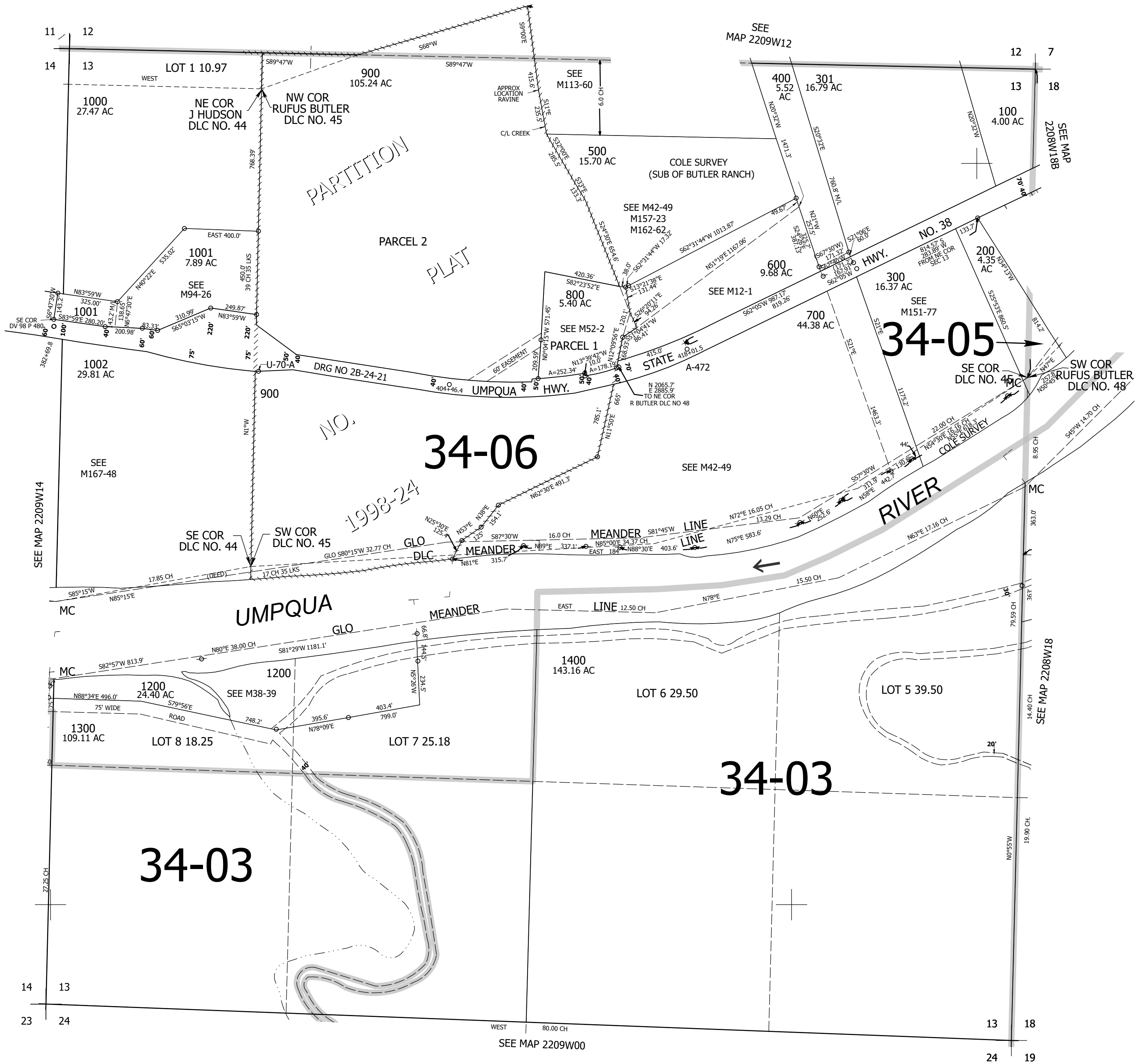
Upper Left:
123°43'47"W 43°40'2"N
4066883E 745533N ft

SEC.13 T.22S. R.09W. W.M.
DOUGLAS COUNTY
1" = 400'

Date Exported 2025-07-30

220913

CANCELLED NOS:
1100 600M1 1300M1
501



220913

Lower Right:
123°41'57"W 43°38'56"N
4074732E 738578N ft