

THIS MAP WAS PREPARED FOR ASSESSMENT PURPOSE ONLY.

Upper Left:
123°48'26"W 43°40'51"N
4046617E 751306N ft

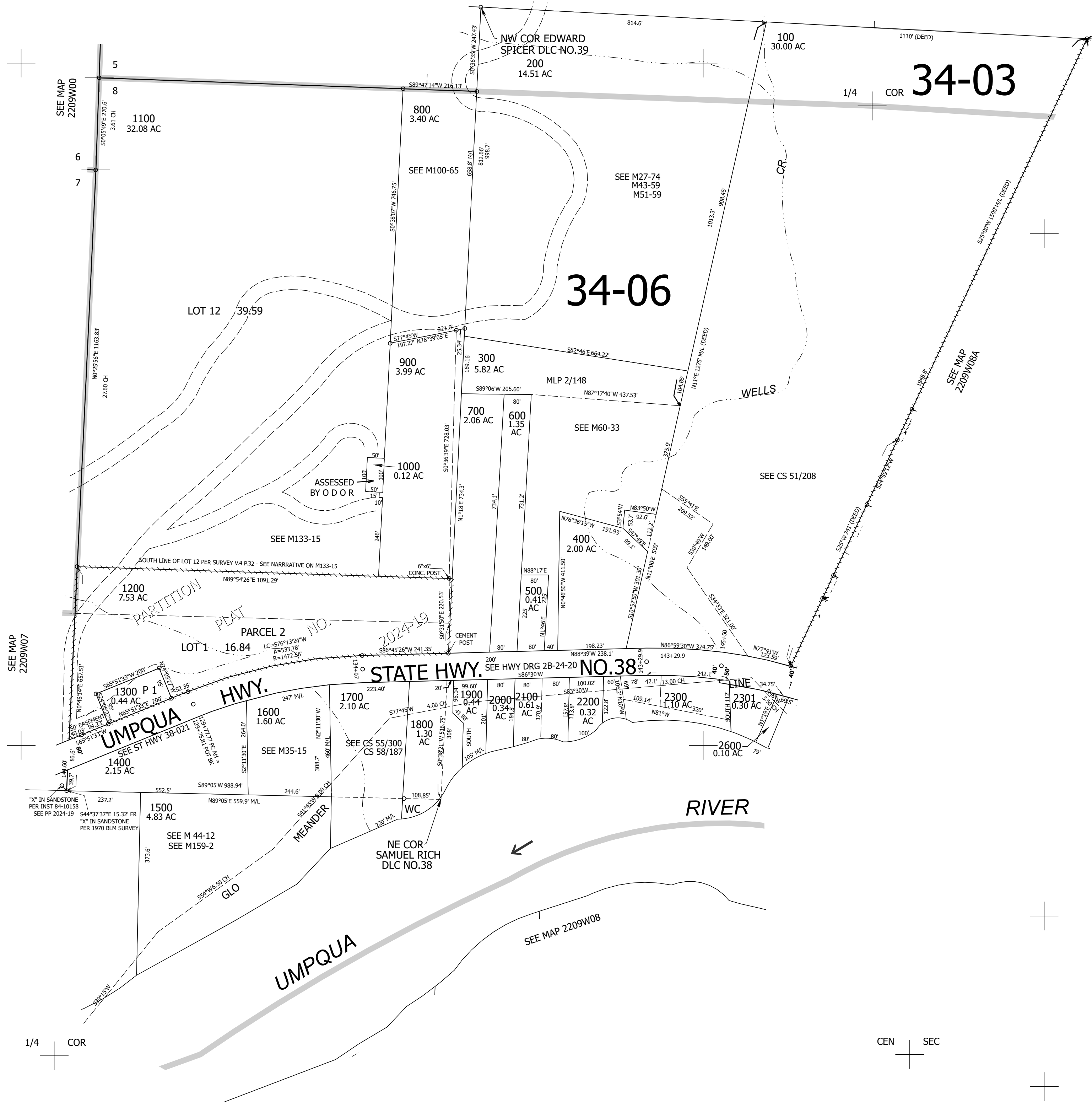
NW1/4 SEC.08 T.22S. R.09W. W.M.
DOUGLAS COUNTY

1" = 200'
SEE MAP 2209W05

Date Exported 2024-07-09

220908B

CANCELLED NOS:
500A1 1201 2400
2500 2700



1/4 COR

CEN SEC

220908B

Lower Right:
123°47'31"W 43°40'18"N
4050541E 747829N ft