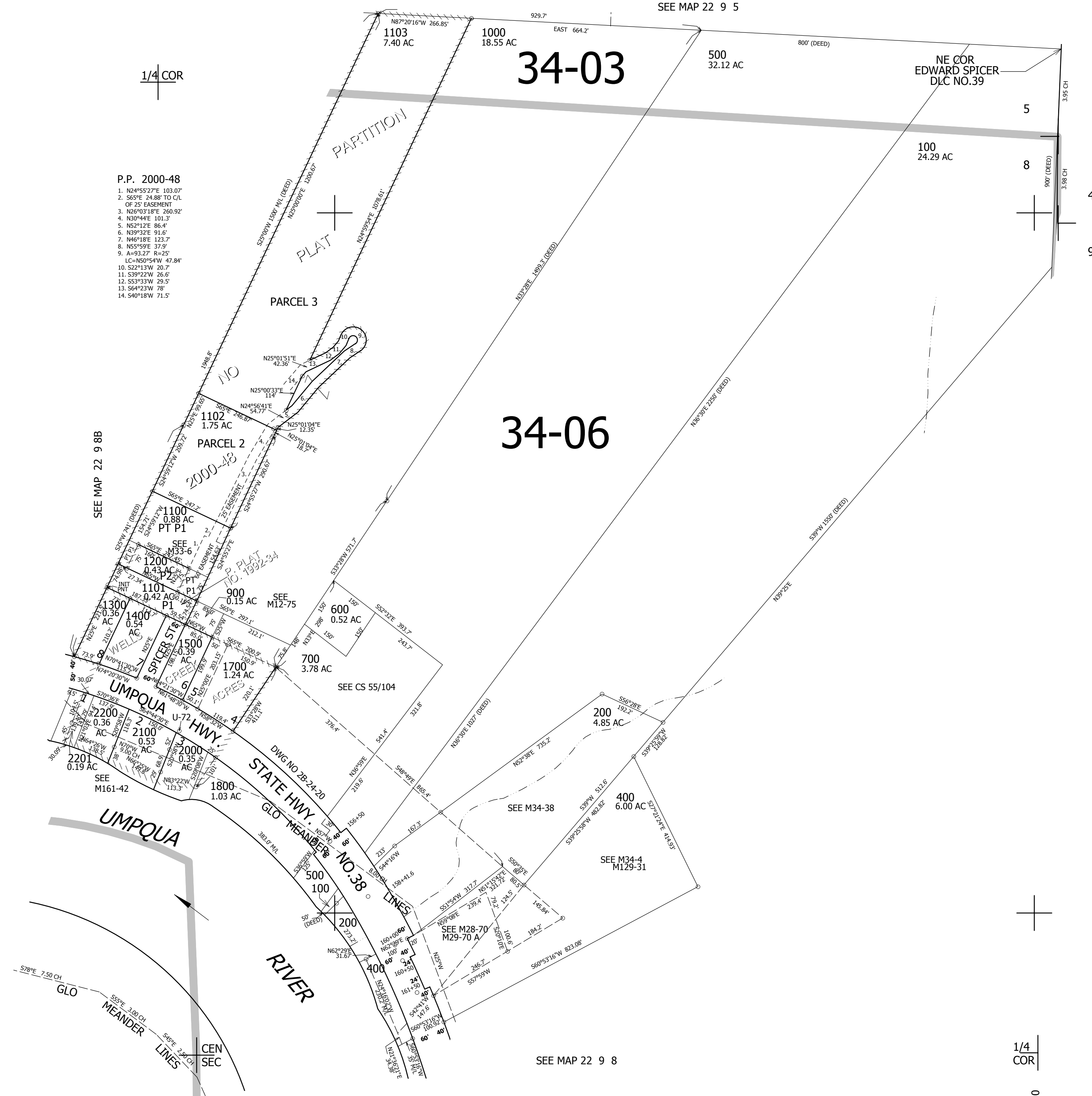


THIS MAP WAS PREPARED FOR ASSESSMENT PURPOSE ONLY.

NE1/4 SEC.8 T.22S. R.9W. W.M. DOUGLAS COUNTY  
1" = 200'

REVISED ON 1/13/16

22 9 8A



- P.P. 2000-48
1. N24°55'27"E 103.07'
  2. S65°E 24.88' TO C/L OF 25' EASEMENT
  3. N26°03'18"E 260.92'
  4. N30°44"E 101.3'
  5. N52°12'E 86.4'
  6. N39°32'E 91.6'
  7. N46°18'E 123.7'
  8. N55°59'E 33.9'
  9. A=93.27' R=25'
  - LC=N50°54'W 47.84'
  10. S22°13'W 20.7'
  11. S39°22'W 26.6'
  12. S53°33'W 29.5'
  13. S64°23'W 78'
  14. S40°18'W 71.5'

34-03

34-06

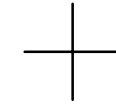
SEE MAP 22 9 8B

SEE MAP 22 9 5

SEE MAP 22 9 9

SEE MAP 22 9 8

CANCELLED NO'S  
1600 900M1 300  
800 1900 1104



748,500

1/4 COR

4,052,000

22 9 8A