

THIS MAP WAS PREPARED FOR ASSESSMENT PURPOSE ONLY.

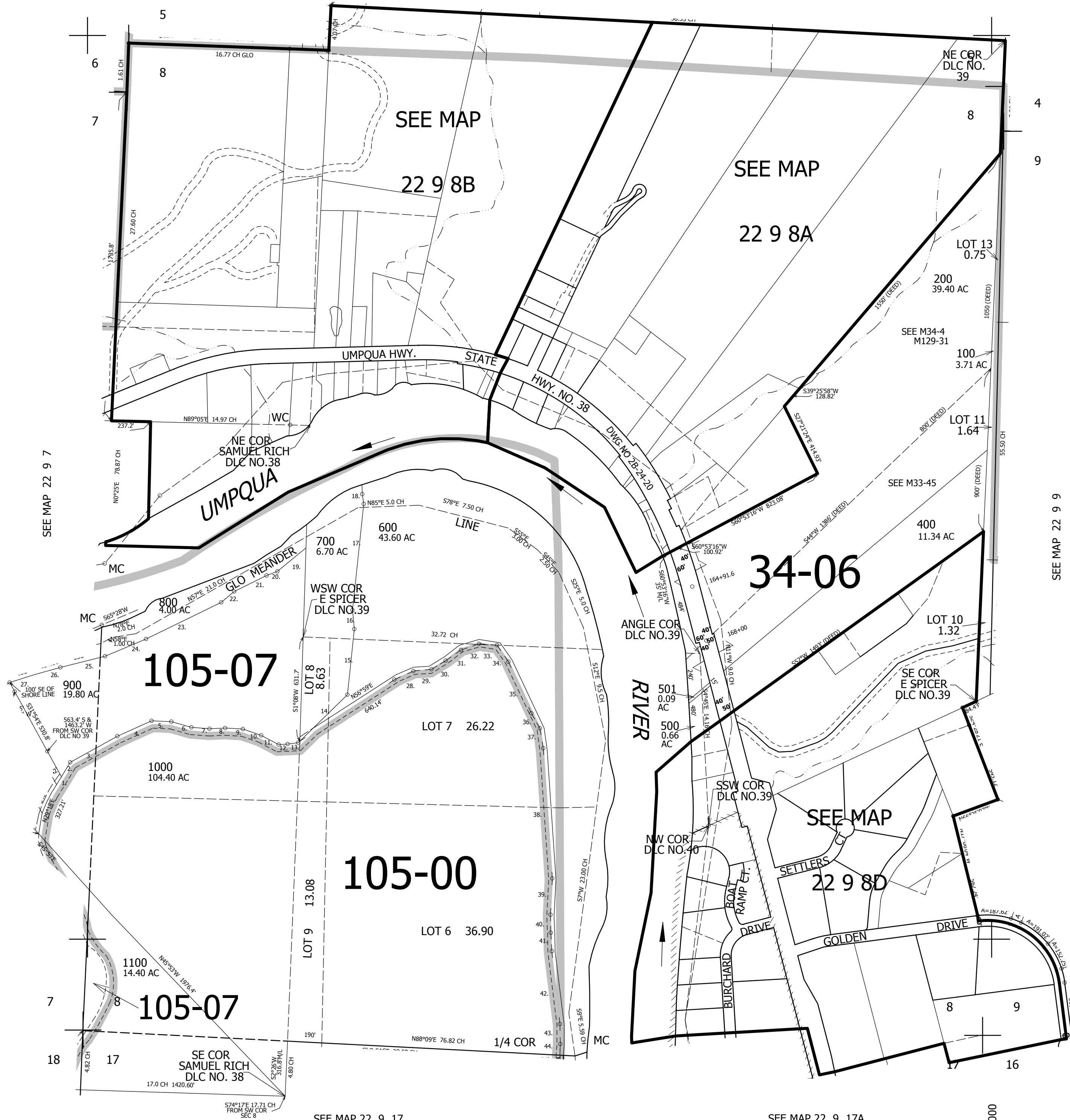
SEC.8 T.22S. R.9W. W.M. DOUGLAS COUNTY

1" = 400'

REVISED ON 3-1-11

22 9 8 & INDEX

SEE MAP 22 9 5



CANCELLED NO'S 800M1 1000M1 1100M1 201 300

TAXLOTS 600 THRU 1000

1. N37°02'E 42.30'
2. N46°14'E 103.42'
3. N66°02'E 297.51'
4. N71°44'E 203.31'
5. N83°06'E 104.01'
6. S73°44'E 108.08'
7. S78°15'E 98.40'
8. S89°52'E 96.04'
9. S88°56'E 102.00'
10. S66°58'E 105.95'
11. S57°54'E 103.02'
12. S89°32'E 45.30'
13. S89°32'E 44.16'
14. N43°13'E 369.60'
15. N2°35'E 379.10'
16. N7°03'W 121.30'
17. S2°25'W 534.00'
18. N20°04'W 56.20'
19. N49°46'E 149.00' BY DEED
20. N60°08'E 61.00'
21. N63°06'E 253.00'
22. N52°06'E 108.00'
23. N62°57'E 506.00'
24. N68°44'E 274.00'
25. N73°52'E 256.00'
26. N72°17'E 154.00'
27. N74°09'E 136.00'
28. N66°12'E 102.89'
29. N83°59'E 106.09'
30. N58°42'E 91.82'
31. N53°02'E 97.70'
32. N69°15'E 105.62'
33. S84°24'E 109.19'
34. S35°23'E 115.93'
35. S25°47'E 297.81'
36. S27°55'E 101.77'
37. S9°30'E 106.51'
38. S4°56'E 704.62'
39. S1°49'W 203.47'
40. S0°57'E 93.88'
41. S3°35'E 98.93'
42. S7°52'E 406.95'
43. S4°19'E 102.96'
44. S3°38'W 101.21'

746,000

4,052,000

22 9 8 & INDEX

SEE MAP 22 9 7

SEE MAP 22 9 9

SEE MAP 22 9 17

SEE MAP 22 9 17A