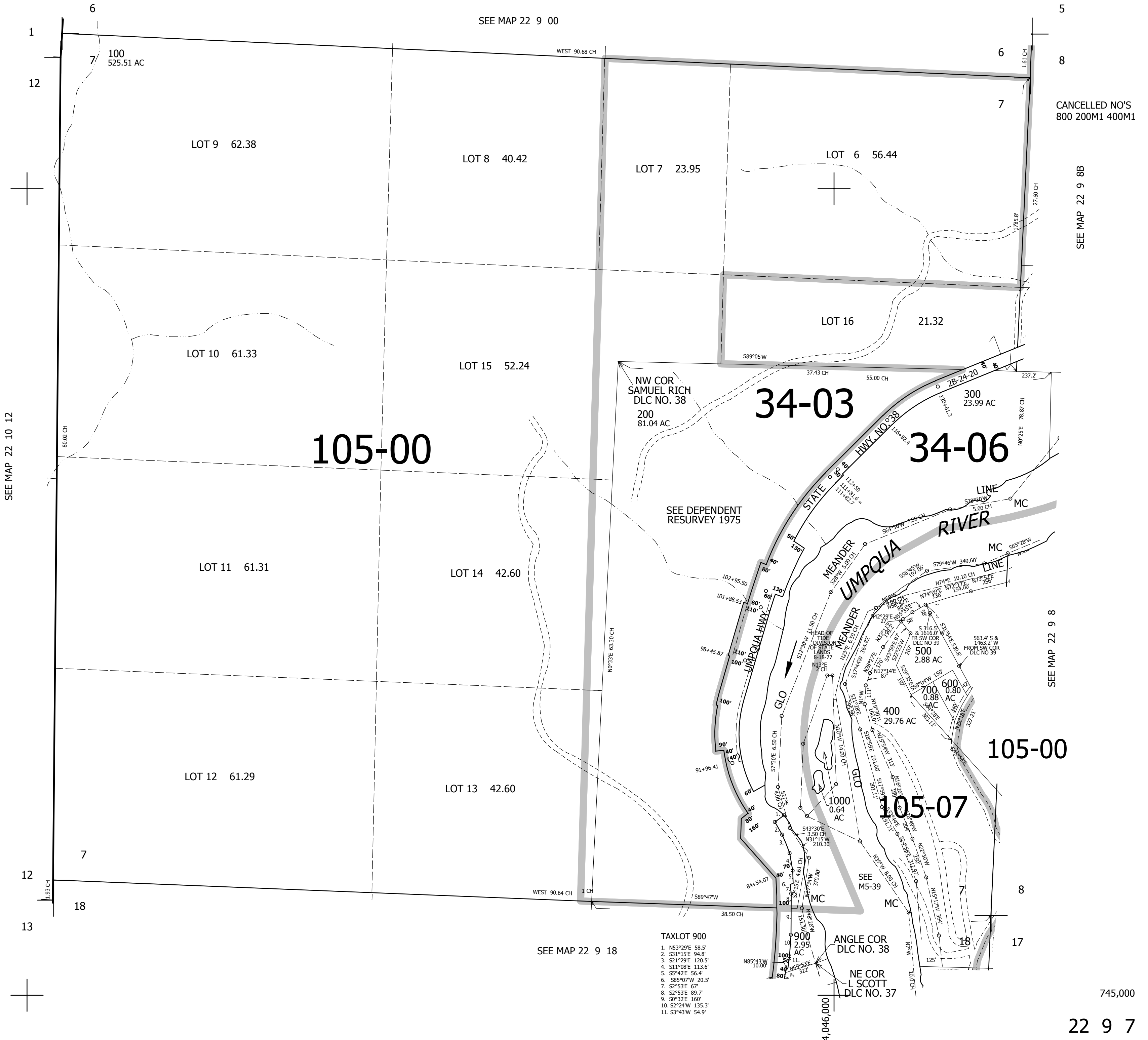


THIS MAP WAS PREPARED FOR ASSESSMENT PURPOSE ONLY.

SEC.7 T.22S. R.9W. W.M.
DOUGLAS COUNTY
1" = 400'

REVISED ON
3-6-13

22 9 7



SEE MAP 22 10 12

SEE MAP 22 9 00

CANCELLED NO'S
800 200M1 400M1

SEE MAP 22 9 8B

SEE MAP 22 9 8

SEE MAP 22 9 18

- TAXLOT 900
1. N53°29'E 58.5'
 2. S31°15'E 94.8'
 3. S21°29'E 120.5'
 4. S11°08'E 113.6'
 5. S5°42'E 56.4'
 6. S85°07'W 20.5'
 7. S2°53'E 67'
 8. S2°53'E 89.7'
 9. S0°32'E 160'
 10. S2°24'W 135.3'
 11. S3°43'W 54.9'

745,000

22 9 7