

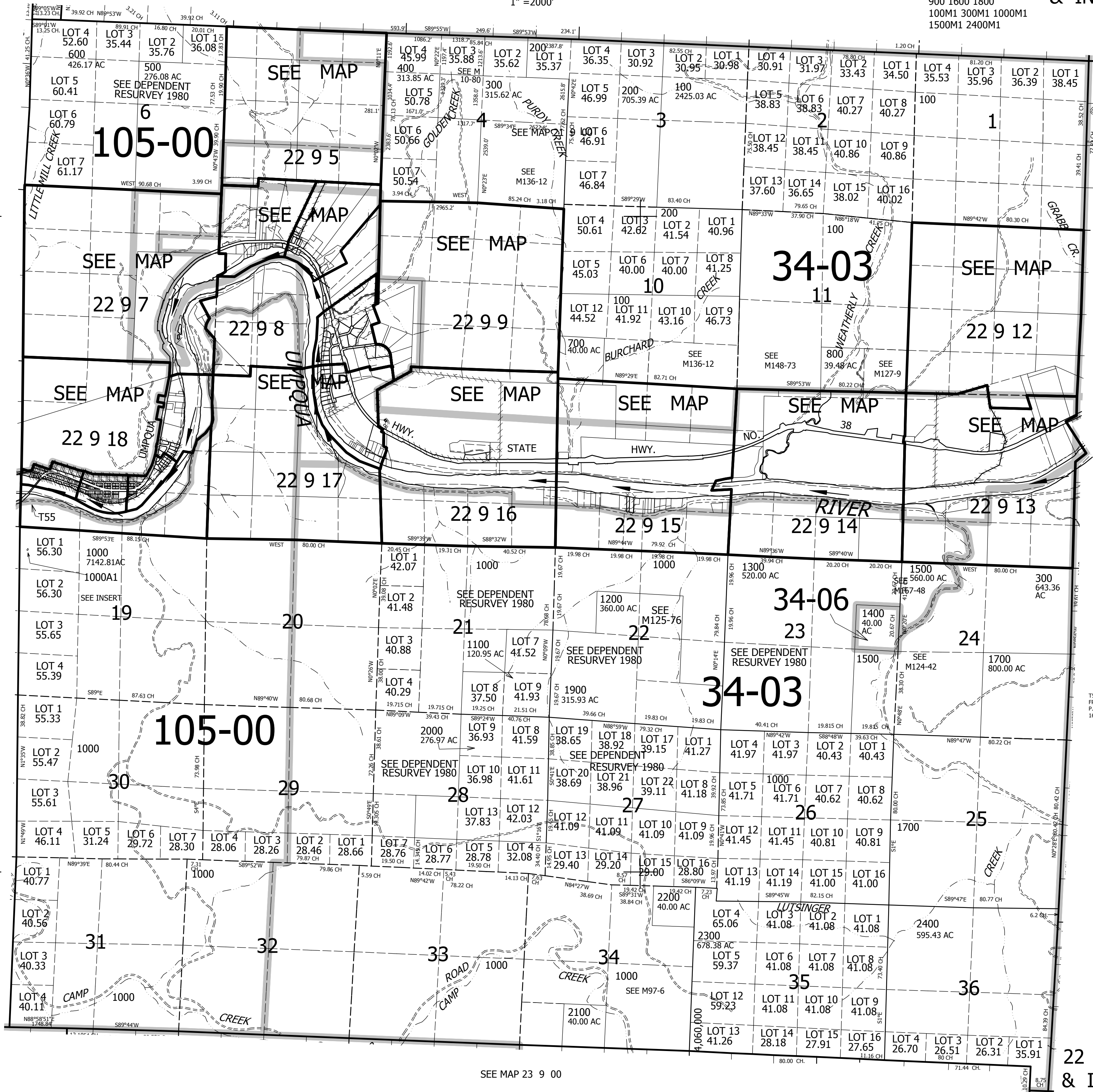
THIS MAP WAS PREPARED FOR ASSESSMENT PURPOSE ONLY.

T.22S. R.9W. W.M. DOUGLAS COUNTY 1" = 2000'

REVISED ON 7-5-11

CANCELLED NO'S 900 1600 1800 100M1 300M1 1000M1 1500M1 2400M1

22 9 00 & INDEX



T55 BEARS N5°E 1000' FR NW COR SEC 19 P.O.B. BEARS S4°53'08\"

1000A1 INSERT 1\"=100'

730,000

22 9 00 & INDEX

SEE MAP 23 9 00

SEE MAP 22 10 00

SEE MAP 22 8 00