

SEC.29 T.22S. R.8W. W.M.  
DOUGLAS COUNTY

1" = 400'

REVISED ON  
2-22-18

22 8 29

THIS MAP WAS PREPARED FOR  
ASSESSMENT PURPOSE ONLY.

SEE MAP 22 8 20

SEE MAP 22 8 00

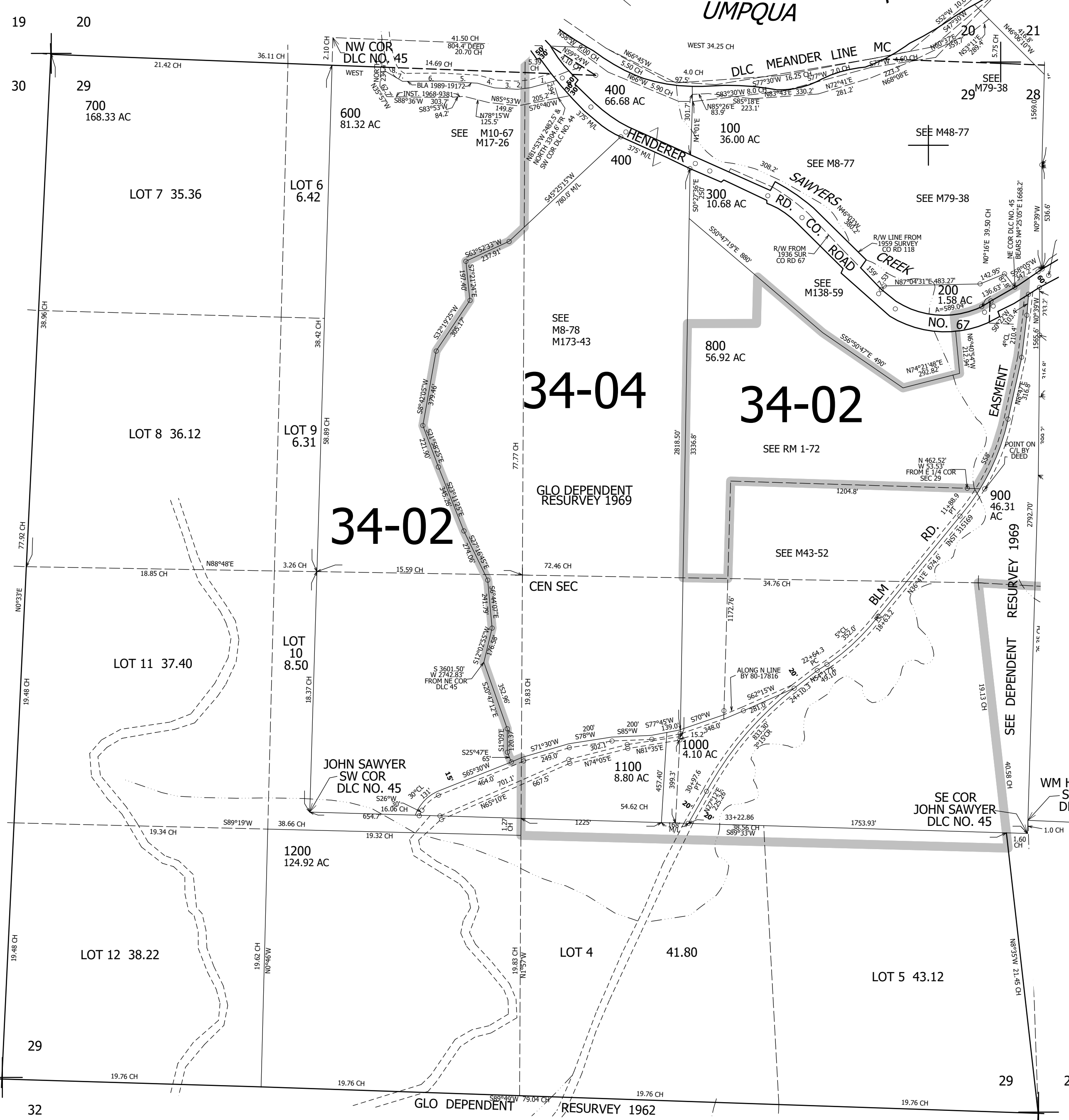
SEE MAP 22 8 00

CANCELLED NO'S  
500 301

PARCEL 600  
P.O.B. BEARS S83°45'00"E 197.08'  
FR N. 1/4 COR SECTION 29  
1. S72°15'30"W 174.26'  
2. S80°59'45"W 65.54'  
3. N88°45'15"W 115.96'  
4. N76°45'W 88.1'  
5. N88°45'45"W 179.09'  
6. S87°17'30"W 196.91'  
7. N61°36'30"W 102.35'  
8. N5°05'W 18.92'

SEE MAP 22 8 28

34-02



4,083,000

728,000

22 8 29