

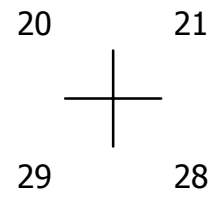
THIS MAP WAS PREPARED FOR ASSESSMENT PURPOSE ONLY.

SEC.28 T.22S. R.8W. W.M. DOUGLAS COUNTY

REVISED ON 1-25-21

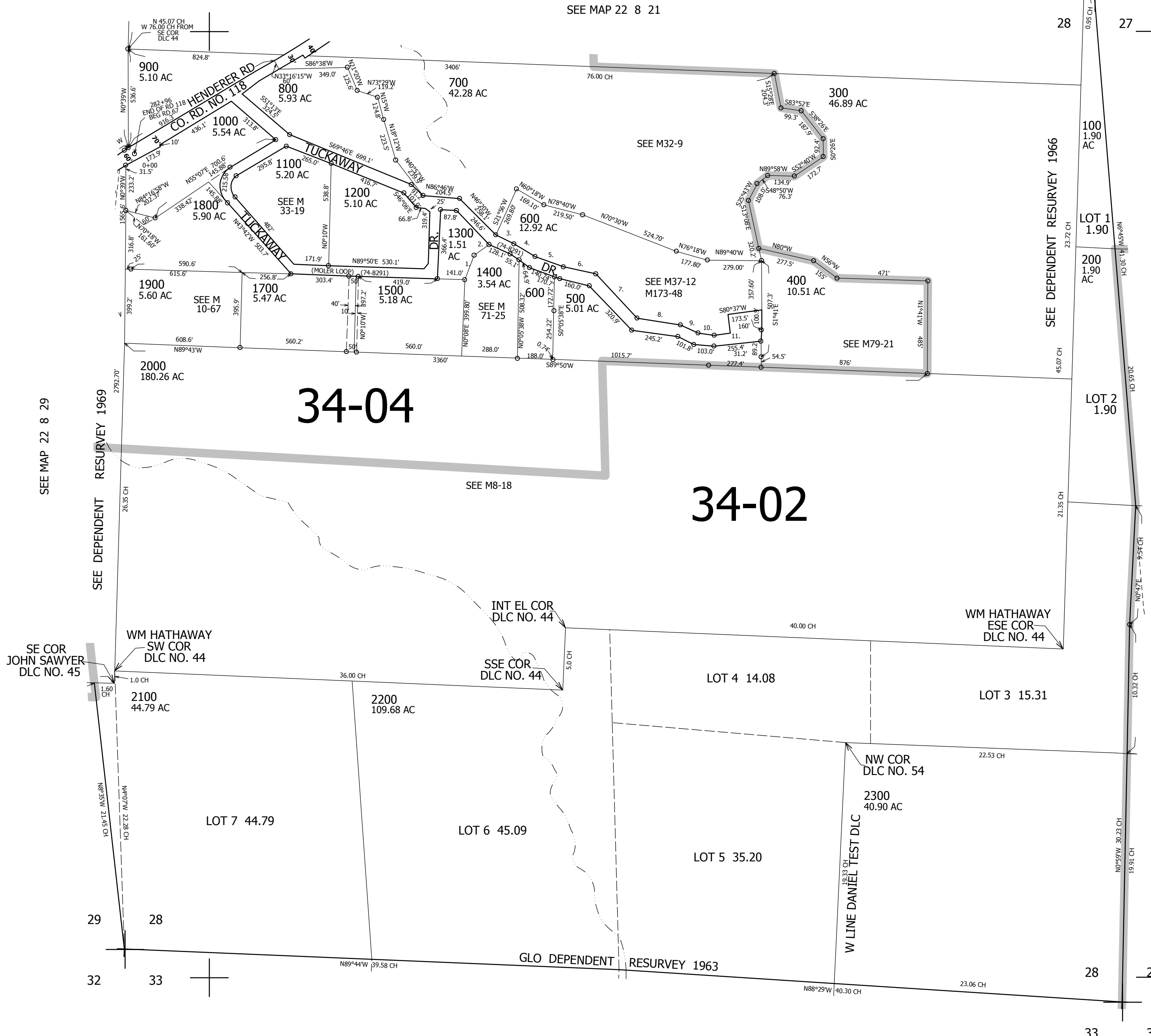
22 8 28

1" = 400'



21 22

28 27



SEE MAP 22 8 21

SEE M32-9

SEE M37-12 M173-48

SEE M79-21

SEE MAP 22 8 29

SEE DEPENDENT RESURVEY 1969

SEE DEPENDENT RESURVEY 1966

SEE MAP 22 8 27

CANCELLED NO'S 1600 1601 501

- PARCELS 600 & 1300
1. S22°10'15"W 136.44'
 2. S48°03'15"W 94.68'
 3. S56°02'E 121.80'
 4. S58°13'E 117.20'
 5. S71°27'E 159.00'
 6. S78°59'E 174.00'
 7. S44°53'E 317.80'
 8. S84°24'E 233.20'
 9. S66°01'E 102.50'
 10. S83°11'E 85.80'
 11. N80°37'E 254.90'

34-04

34-02

SE COR JOHN SAWYER DLC NO. 45

WM HATHAWAY SW COR DLC NO. 44

INT EL COR DLC NO. 44

SSE COR DLC NO. 44

WM HATHAWAY ESE COR DLC NO. 44

NW COR DLC NO. 54

W LINE DANIEL TEST DLC

GLO DEPENDENT RESURVEY 1963

29 28

32 33

28 27

33 34

728,000

SEE MAP 22 8 33

4,084,000

22 8 28