

THIS MAP WAS PREPARED FOR ASSESSMENT PURPOSE ONLY.

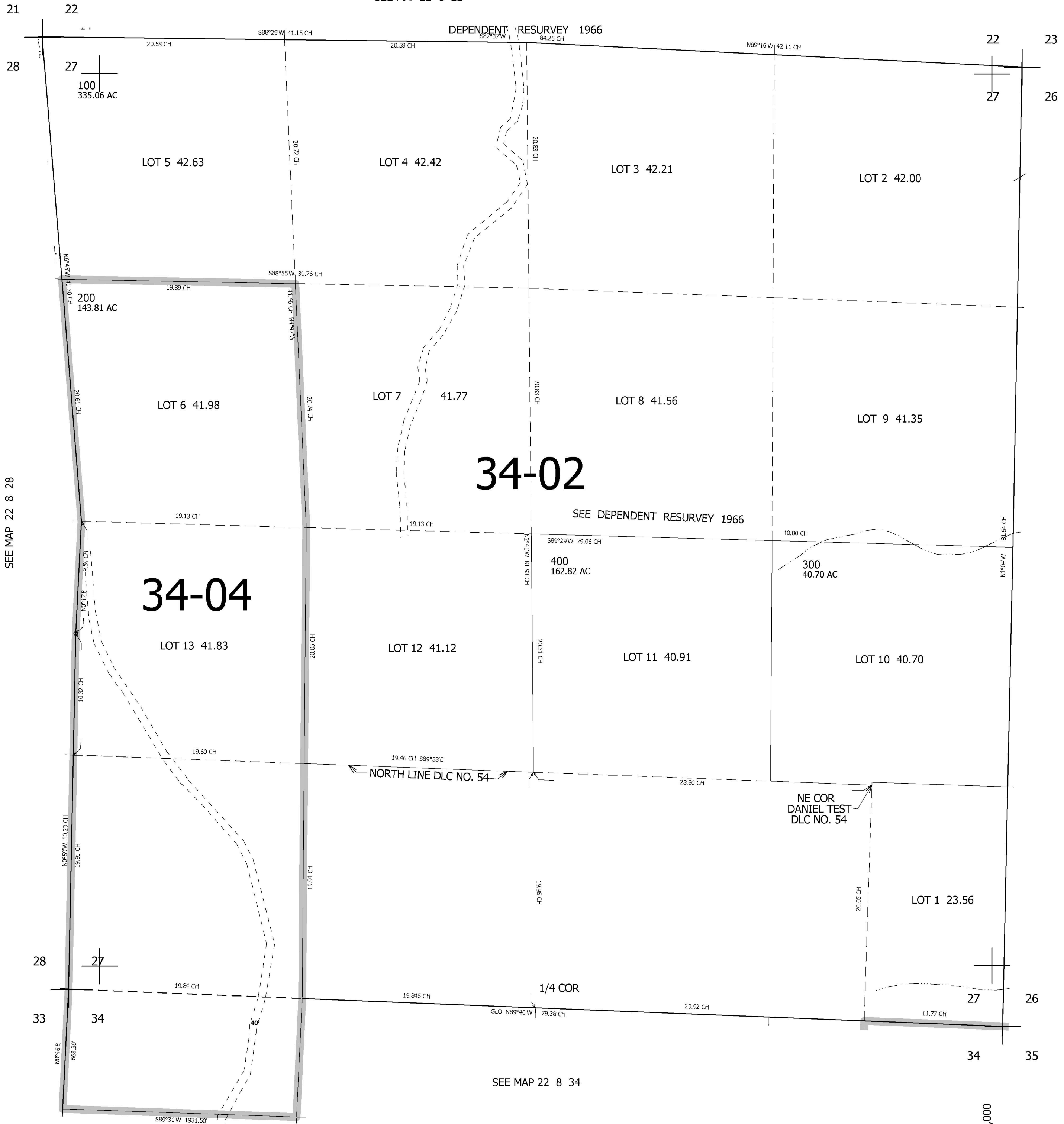
SEC.27 T.22S. R.8W. W.M.
DOUGLAS COUNTY

REVISED ON
3-3-04

22 8 27

SEE MAP 22 8 22

1" = 400'



SEE MAP 22 8 28

SEE MAP 22 8 26

34-02

34-04

SEE MAP 22 8 34

4,094,000

22 8 27