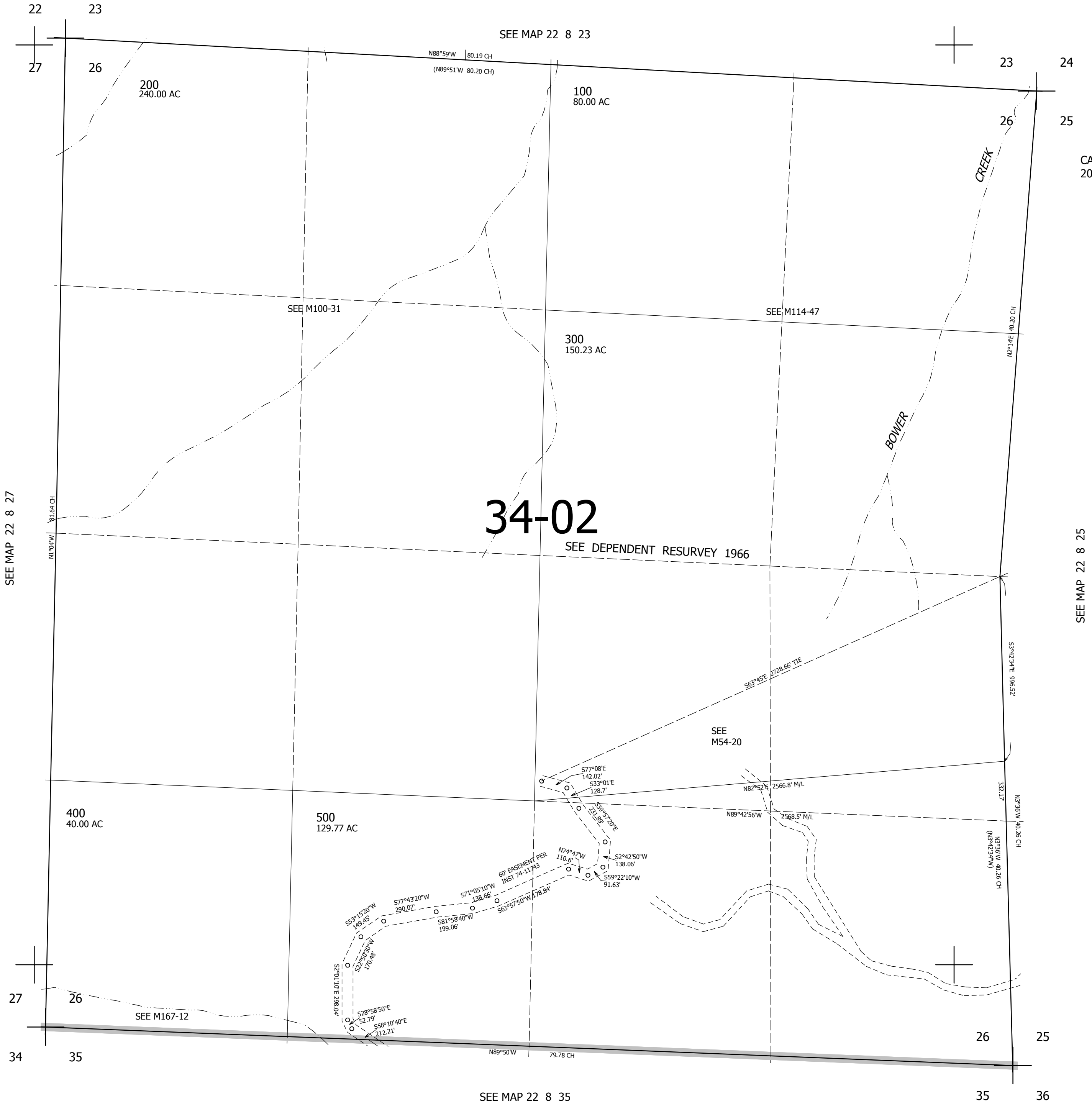


THIS MAP WAS PREPARED FOR ASSESSMENT PURPOSE ONLY.

SEC.26 T.22S. R.8W. W.M.
DOUGLAS COUNTY
1" = 400'

REVISED ON
11-7-18

22 8 26



CANCELLED NO'S
200M1

728,000

22 8 26

4,099,000