

THIS MAP WAS PREPARED FOR
ASSESSMENT PURPOSE ONLY.

NE1/4 SEC.24 T.22S. R.8W. W.M. DOUGLAS COUNTY

REVISED ON
5-20-14

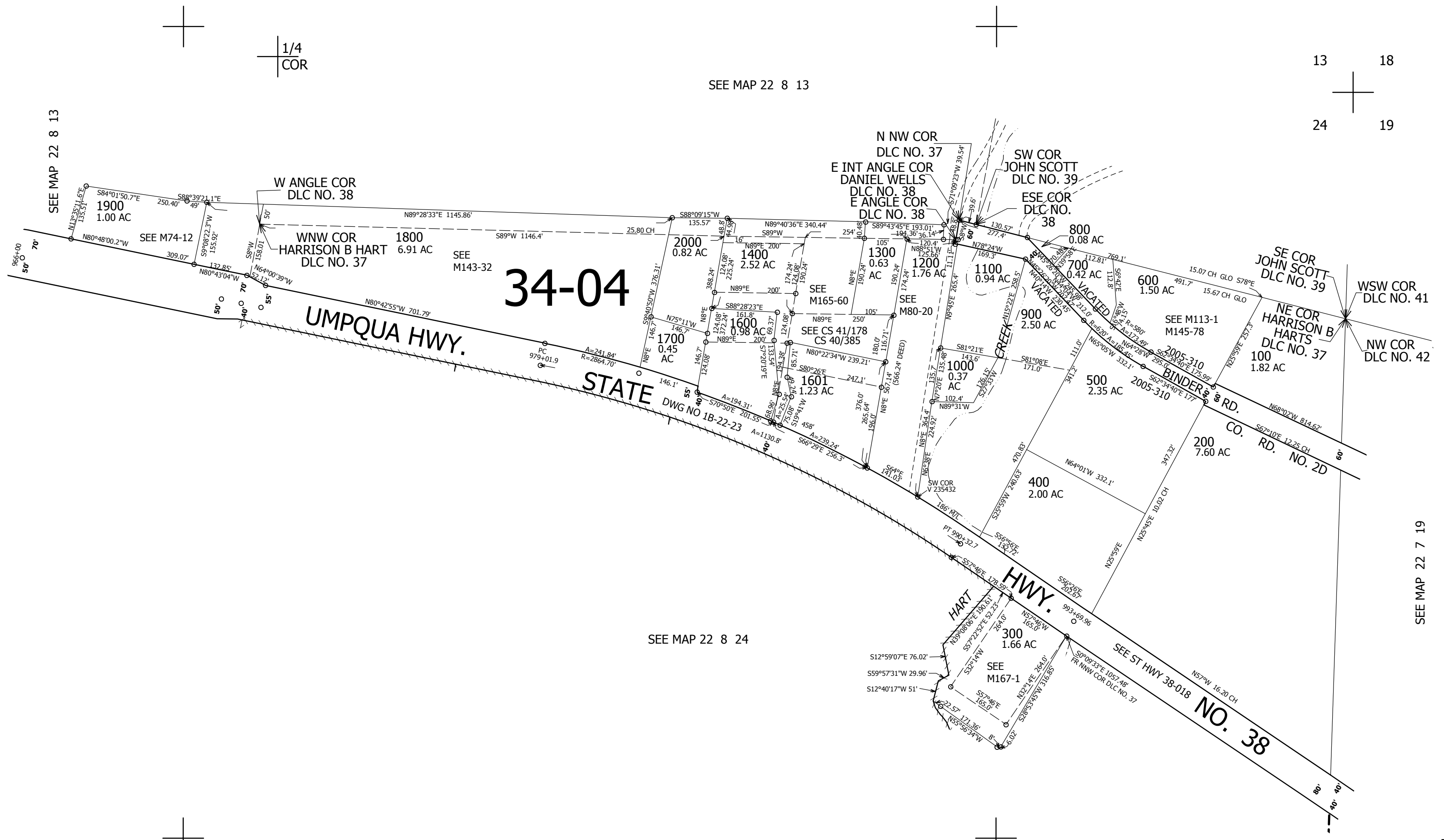
22 8 24A

1" = 200'

CANCELLED NO'S
1500 1801 2001
1602

SEE MAP 22 8 13

13 18
24 19



SEE MAP 22 8 24

SEE MAP 22 7 19

736,000

CEN
SEC

1/4
COR

4,104,000

22 8 24A