

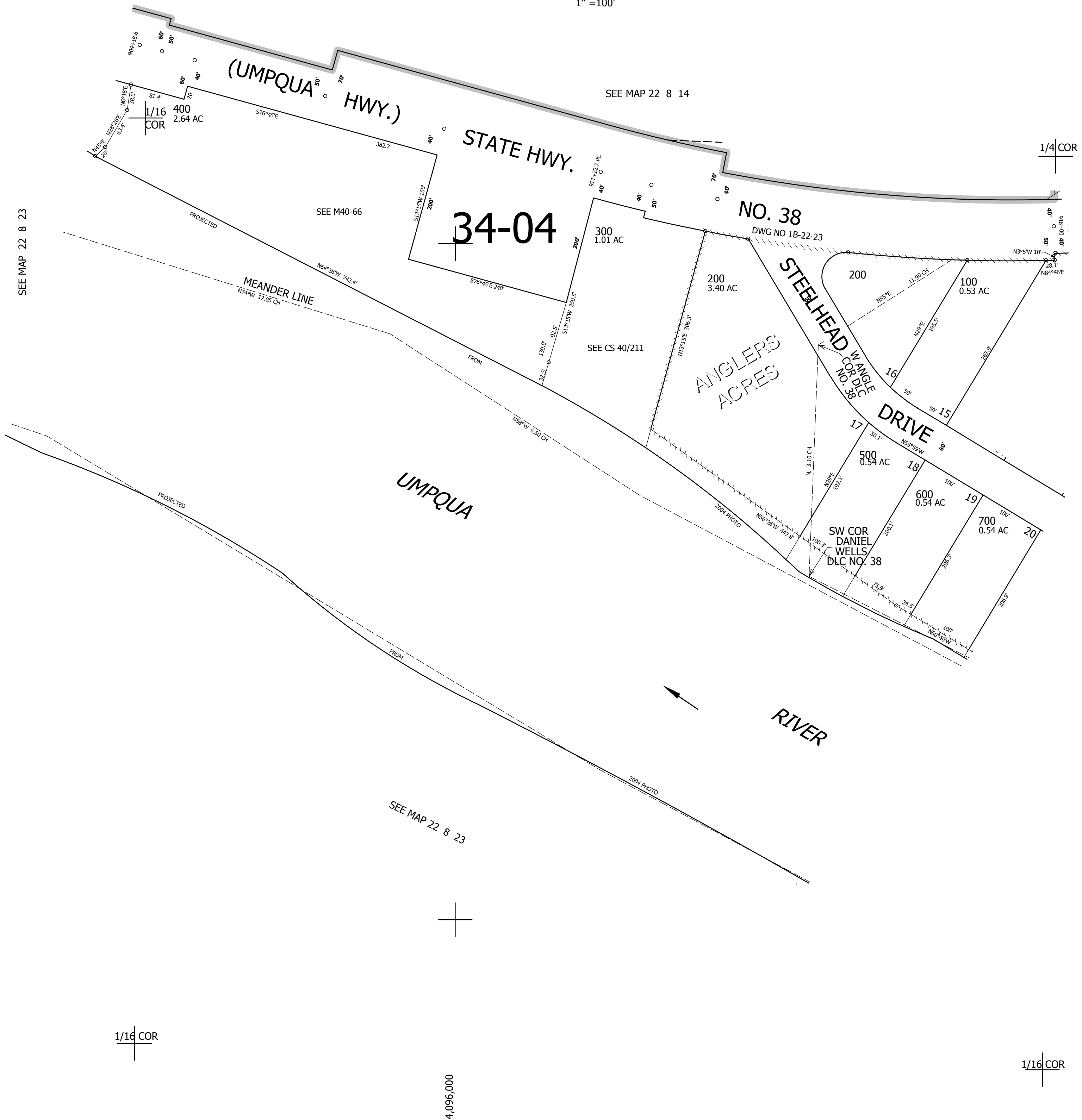
THIS MAP WAS PREPARED FOR ASSESSMENT PURPOSE ONLY.

NE1/4 NW1/4 SEC.23 T.22S. R.8W. W.M.
DOUGLAS COUNTY

REVISED ON
6-21-13

22 8 23BA

1" = 100'



SEE MAP 22 8 23

SEE MAP 22 8 14

CANCELLED NO'S

SEE MAP 22 8 23AB

SEE MAP 22 8 23

737,000

1/16 COR

1/16 COR

4,096,000

22 8 23BA