

THIS MAP WAS PREPARED FOR ASSESSMENT PURPOSE ONLY.

SEC.20 T.22S. R.8W. W.M.
DOUGLAS COUNTY

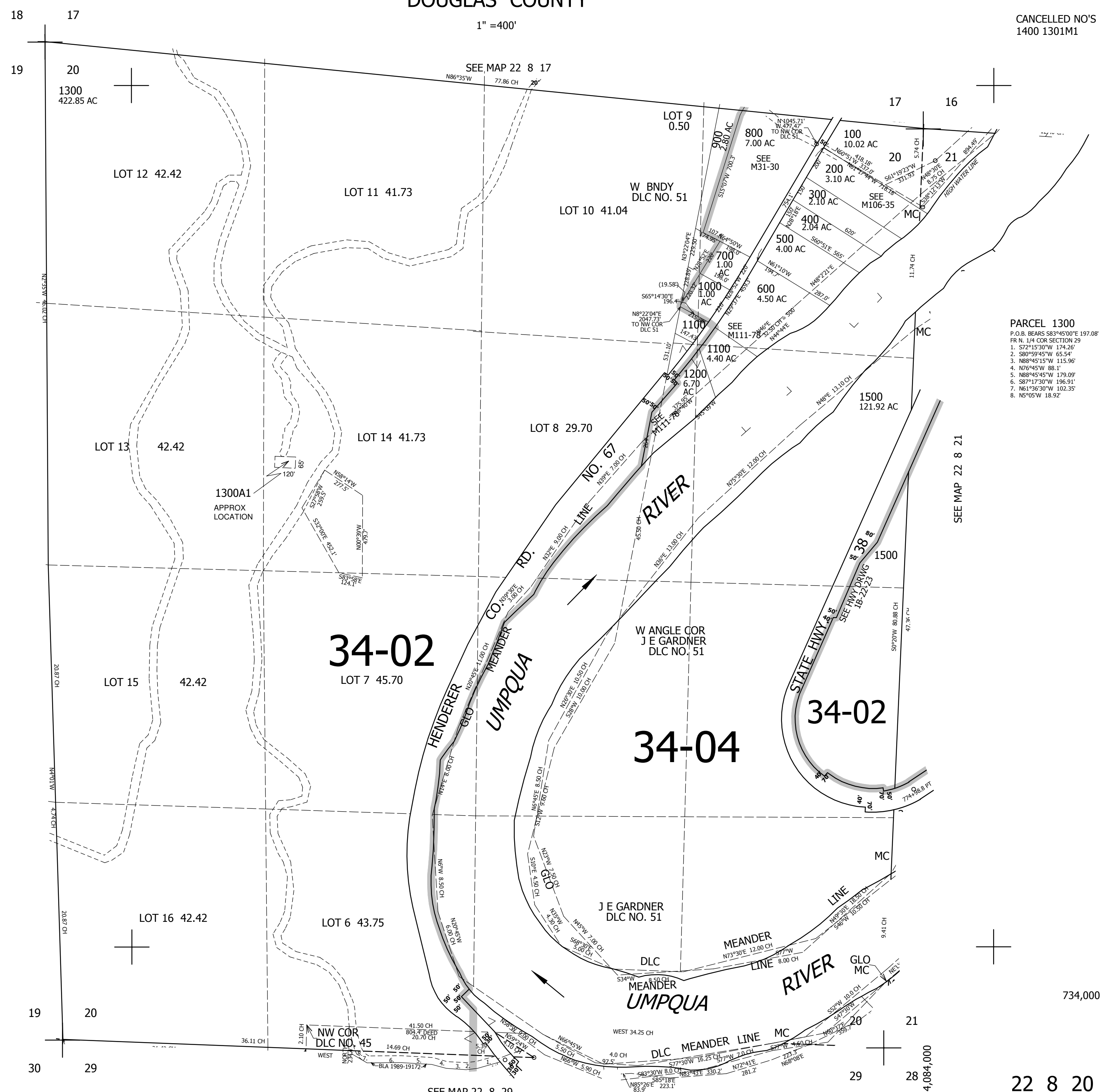
REVISED ON
2-22-18

CANCELLED NO'S
1400 1301M1

1" = 400'

SEE MAP 22 8 00

SEE MAP 22 8 21



PARCEL 1300
 P.O.B. BEARS S83°45'00"E 197.08'
 FR N. 1/4 COR SECTION 29
 1. S72°15'30"W 174.26'
 2. S80°59'45"W 65.54'
 3. N88°45'15"W 115.96'
 4. N76°45'W 88.1'
 5. N88°45'45"W 179.09'
 6. S87°17'30"W 196.91'
 7. N61°36'30"W 102.35'
 8. N5°05'W 18.92'

734,000

4,084,000

SEE MAP 22 8 29