

THIS MAP WAS PREPARED FOR ASSESSMENT PURPOSE ONLY.

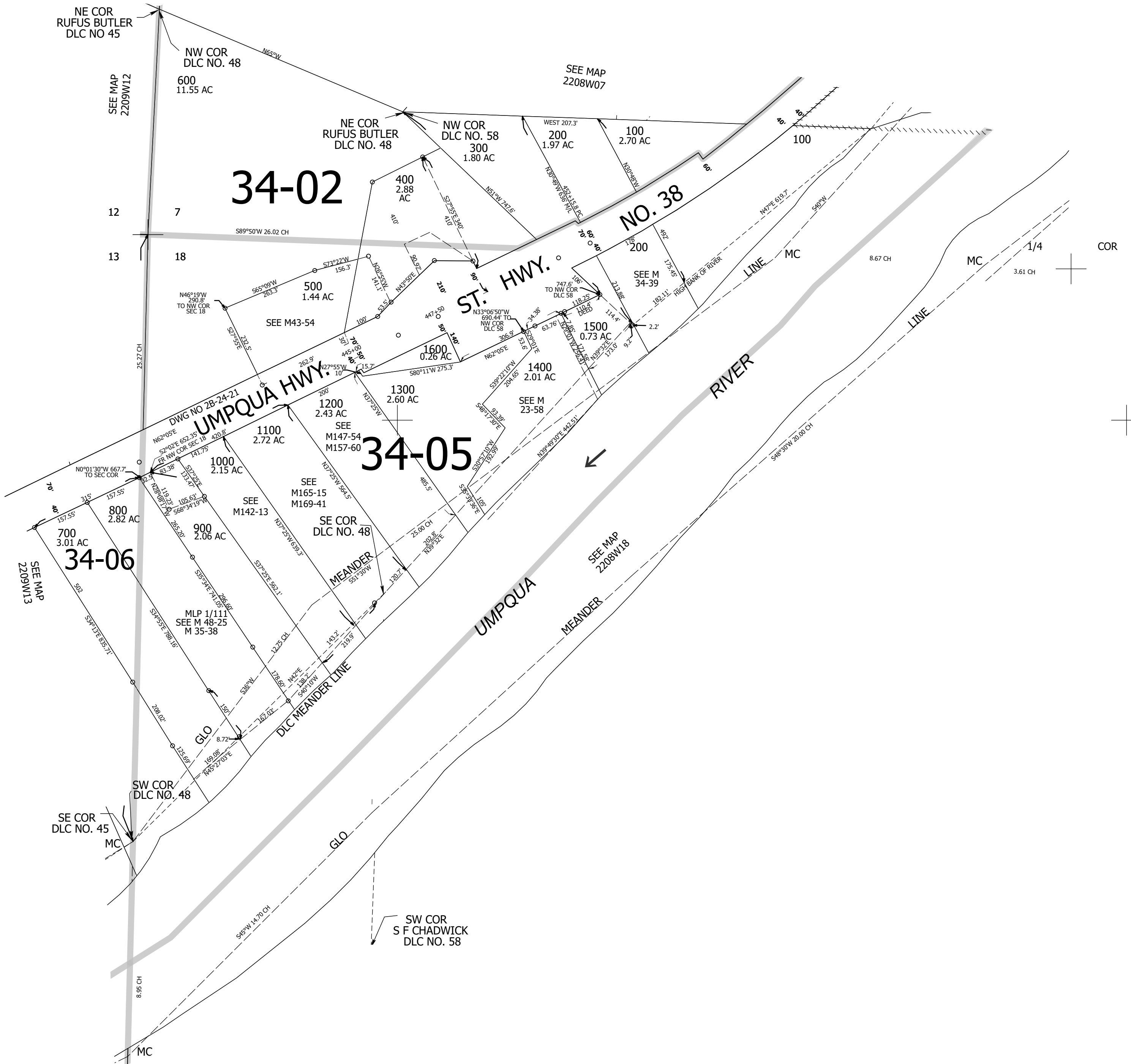
Upper Left:
123°42'32"W 43°40'3"N
4072420E 745449N ft

NW1/4 SEC.18 T.22S. R.08W. W.M.
DOUGLAS COUNTY
1" = 200'

Date Exported 2023-07-24

220818B

CANCELLED NOS:
301 1001 900A1



220818B

Lower Right:
123°41'37"W 43°39'30"N
4076345E 741971N ft