

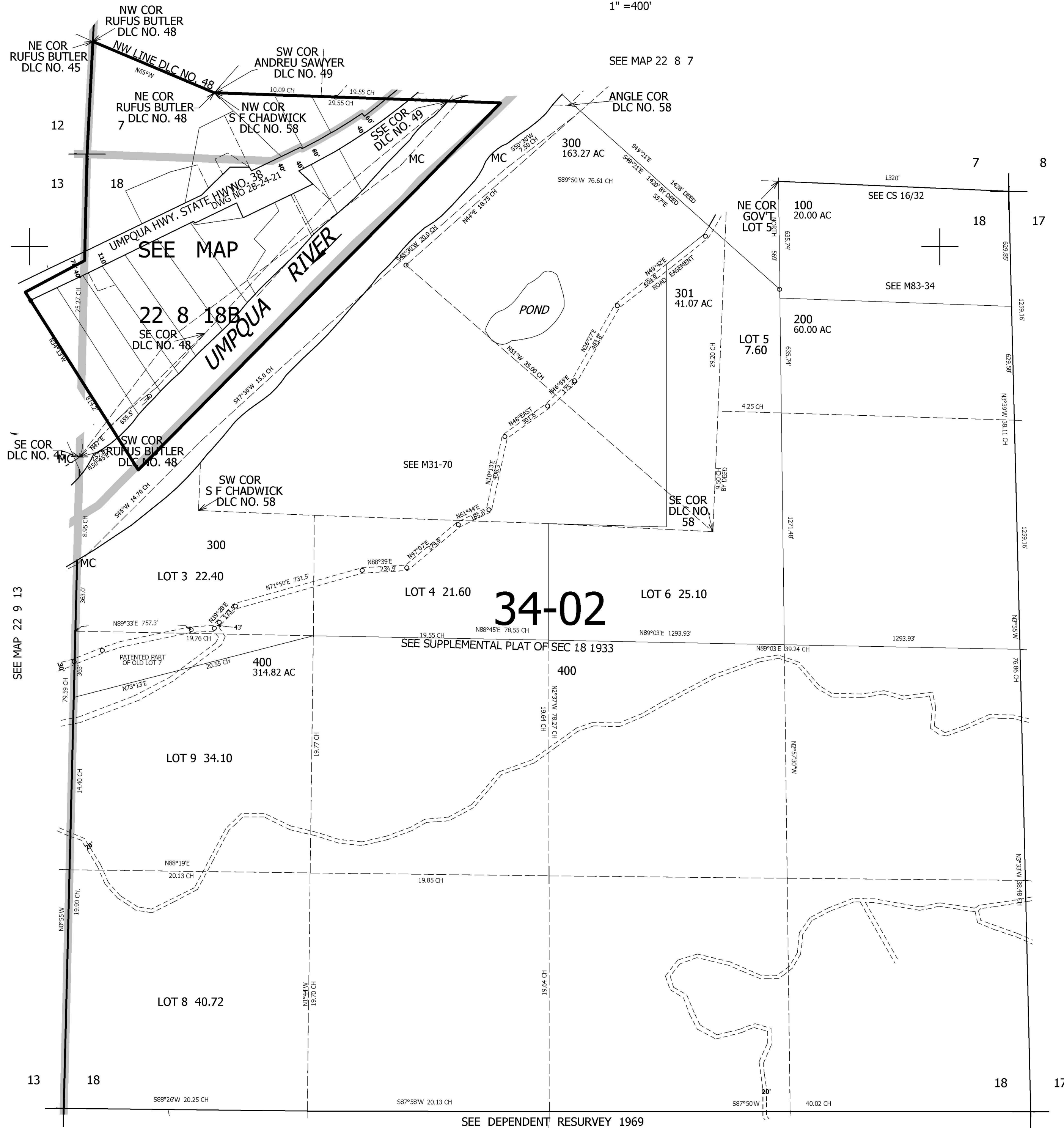
THIS MAP WAS PREPARED FOR ASSESSMENT PURPOSE ONLY.

# SEC.18 T.22S. R.8W. W.M. DOUGLAS COUNTY

1" = 400'

REVISED ON  
5-7-96

## 22 8 18 & INDEX



744,000

CANCELLED NO'S  
200M1

# 34-02

SEE SUPPLEMENTAL PLAT OF SEC 18 1933

SEE DEPENDENT RESURVEY 1969

SEE MAP 22 8 00

4,078,000

## 22 8 18 & INDEX