

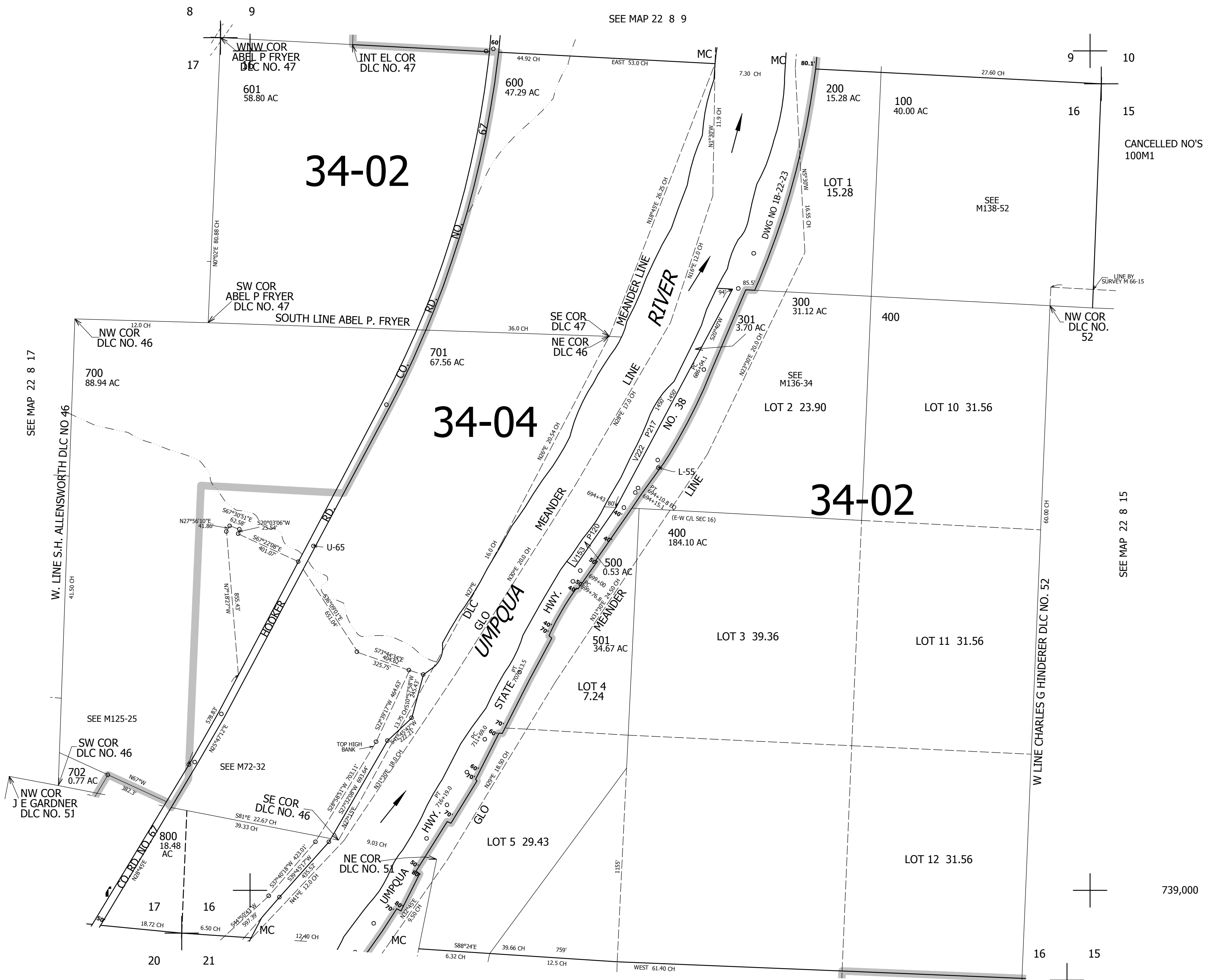
THIS MAP WAS PREPARED FOR ASSESSMENT PURPOSE ONLY.

SEC.16 T.22S. R.8W. W.M.  
DOUGLAS COUNTY

REVISED ON  
2-11-14

22 8 16

1" = 400'



CANCELLED NO'S  
100M1

SEE MAP 22 8 15

739,000

22 8 16

4,089,000