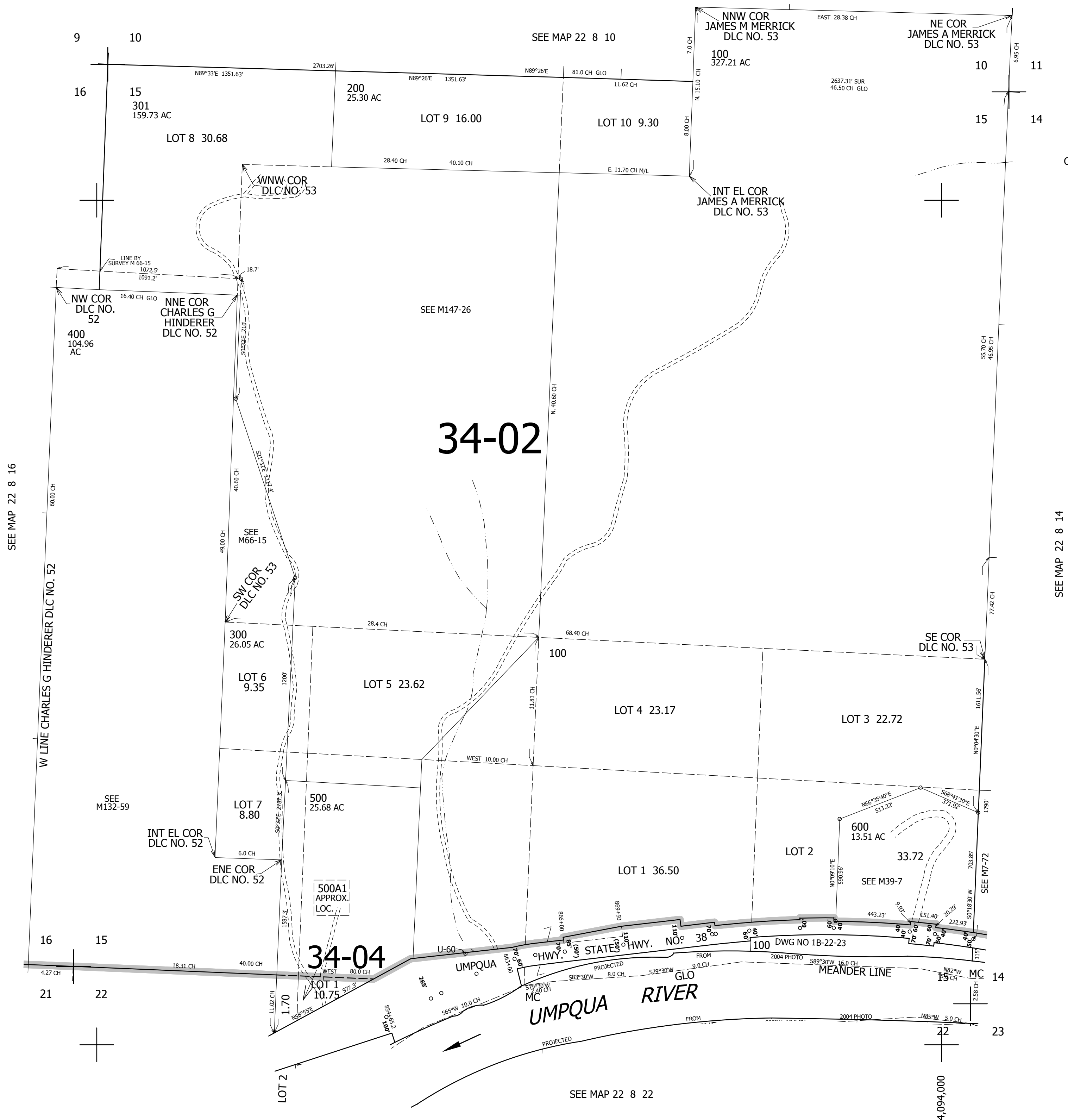


THIS MAP WAS PREPARED FOR ASSESSMENT PURPOSE ONLY.

SEC.15 T.22S. R.8W. W.M.
DOUGLAS COUNTY
1" = 400'

REVISED ON
6-21-13

22 8 15



CANCELLED NO'S

SEE MAP 22 8 16

SEE MAP 22 8 14

738,000

SEE MAP 22 8 22

22 8 15

4,094,000