

THIS MAP WAS PREPARED FOR ASSESSMENT PURPOSE ONLY.

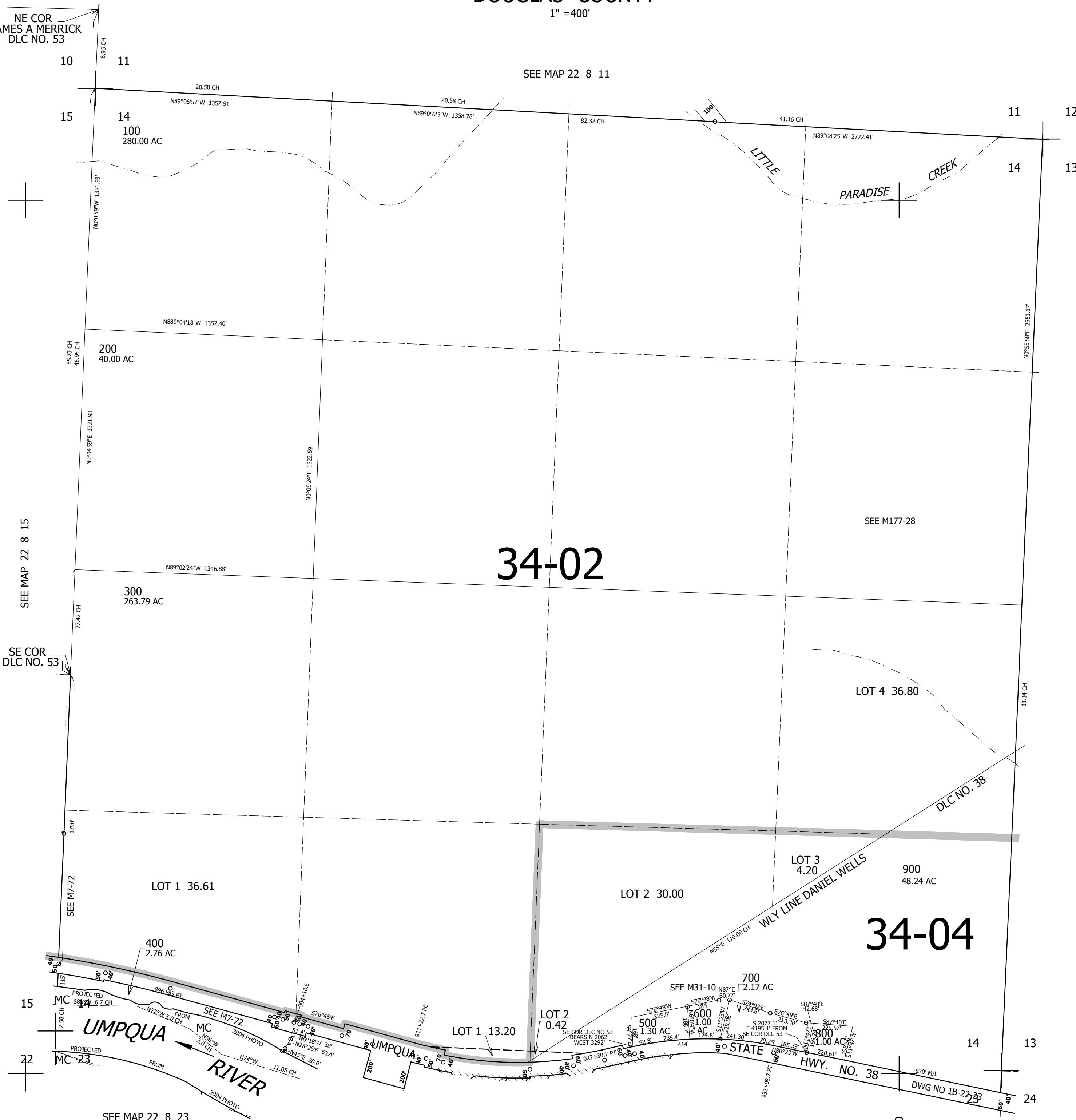
SEC.14 T.22S. R.8W. W.M.
DOUGLAS COUNTY

REVISED ON
6-21-13

22 8 14

1" = 400'

NE COR
JAMES A MERRICK
DLC NO. 53



SEE MAP 22 8 11

SEE MAP 22 8 15

SE COR
DLC NO. 53

CANCELLED NO'S

SEE MAP 22 8 13

34-02

SEE M177-28

LOT 4 36.80

DLC NO. 38

LOT 3 4.20

900 48.24 AC

34-04

700 2.17 AC

LOT 2 30.00

LOT 1 36.61

400 2.76 AC

LOT 1 13.20

LOT 2 0.42

500 1.30 AC

600 1.00 AC

14

13

24

15

22

SEE MAP 22 8 23

SEE MAP 22 8 23BA

SEE MAP 22 8 23AB

SEE MAP 22 8 23

4,099,000

738,000

22 8 14