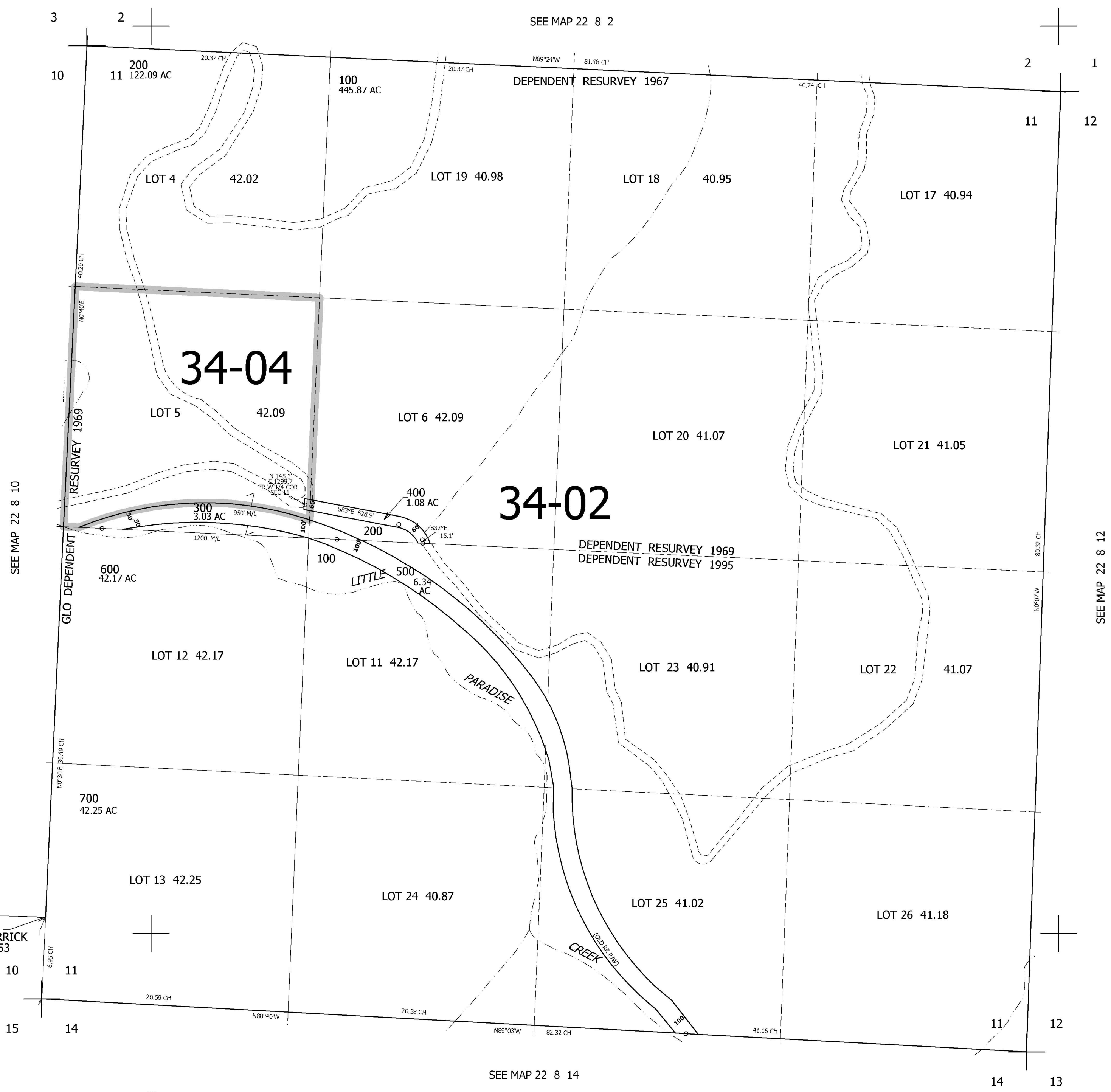


THIS MAP WAS PREPARED FOR ASSESSMENT PURPOSE ONLY.

SEC.11 T.22S. R.8W. W.M.
DOUGLAS COUNTY
1" = 400'

REVISED ON

22 8 11



CANCELLED NO'S
600M1 700M1

SEE MAP 22 8 10

SEE MAP 22 8 12

SEE MAP 22 8 14

NE COR
JAMES A MERRICK
DLC NO. 53

744,000

4,095,000

22 8 11