

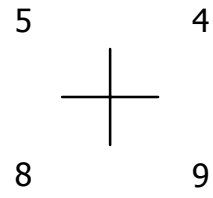
THIS MAP WAS PREPARED FOR ASSESSMENT PURPOSE ONLY.

SEC.9 T.22S. R.8W. W.M. DOUGLAS COUNTY

REVISED ON 4-1-19

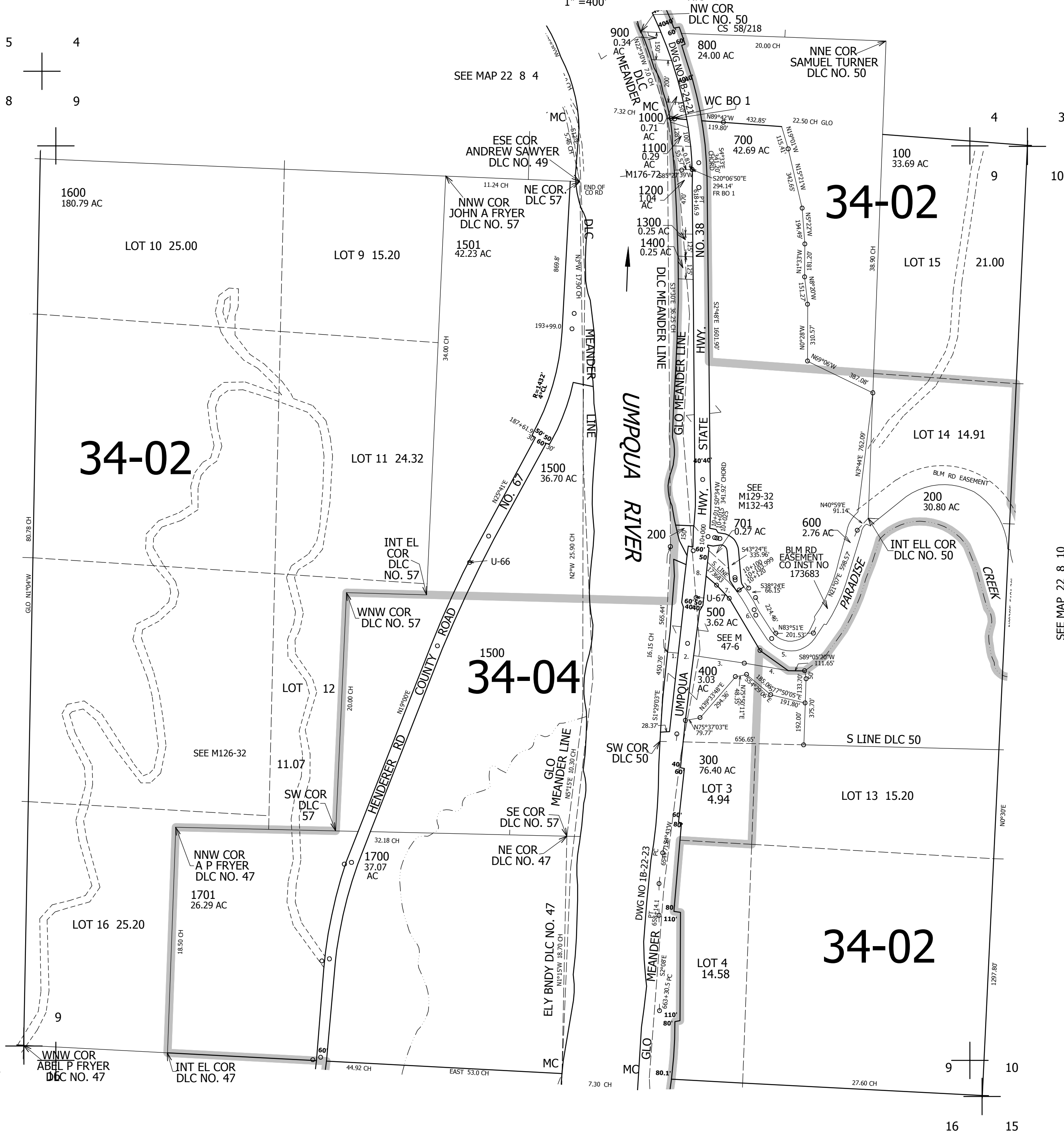
22 8 9

1" = 400'



SEE MAP 22 8 8

8 9 17



CANCELLED NO'S 1201

SEE MAP 22 8 10

R/W WIDTHS
WIDTH ON EASTERLY SIDE OF CENTER LINE
10+000 TO 10+012.082 45.93'
10+012.082 TO 10+025 45.93' IN A STRAIGHT LINE TO 31.17'
10+025 TO 10+103.999 31.17'
10+103.999 TO 10+120 31.17' IN A STRAIGHT LINE TO 15.55'
WIDTH ON WESTERLY SIDE OF CENTER LINE
10+000 TO 10+011 45.93'
10+011 TO 10+015 45.93' IN A STRAIGHT LINE TO 31.17'
10+015 TO 10+100 31.17'

PARCEL 500
1. S83°25'32"E 77.94'
2. S83°25'32"E 80.04'
3. S83°25'32"E 273.64'
4. S83°25'32"E 238.12'
5. N57°12'24"W 818.60'
6. N31°51'20"W 331.00'
7. N44°51'20"W 101.00'
8. N55°51'20"W 340.00'

SEE MAP 22 8 16

4,089,000

744,000

22 8 9