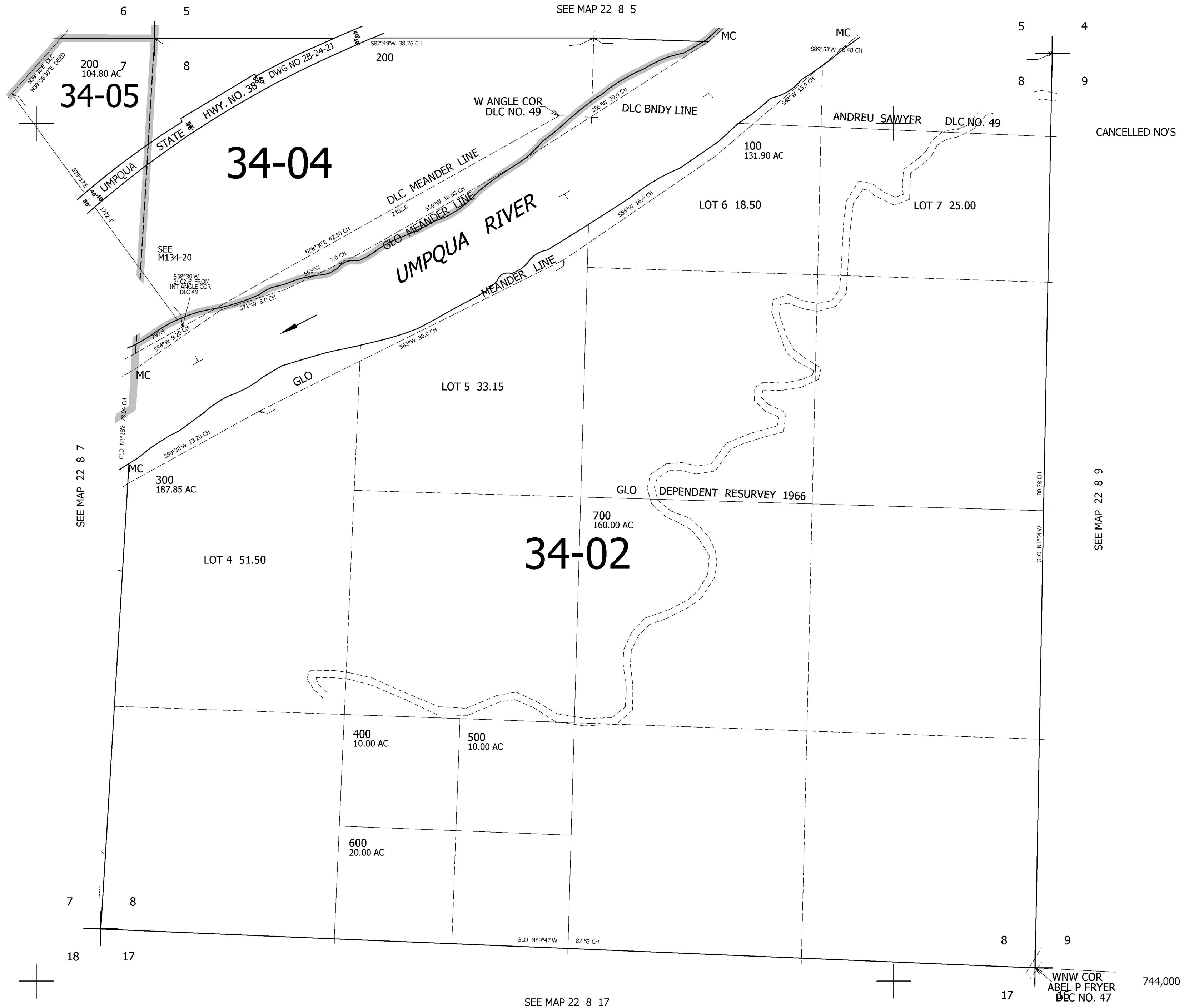


THIS MAP WAS PREPARED FOR ASSESSMENT PURPOSE ONLY.

SEC.8 T.22S. R.8W. W.M.
DOUGLAS COUNTY
1" = 400'

REVISED ON

22 8 8



CANCELLED NO'S

SEE MAP 22 8 9

SEE MAP 22 8 17

4,083,000

22 8 8