

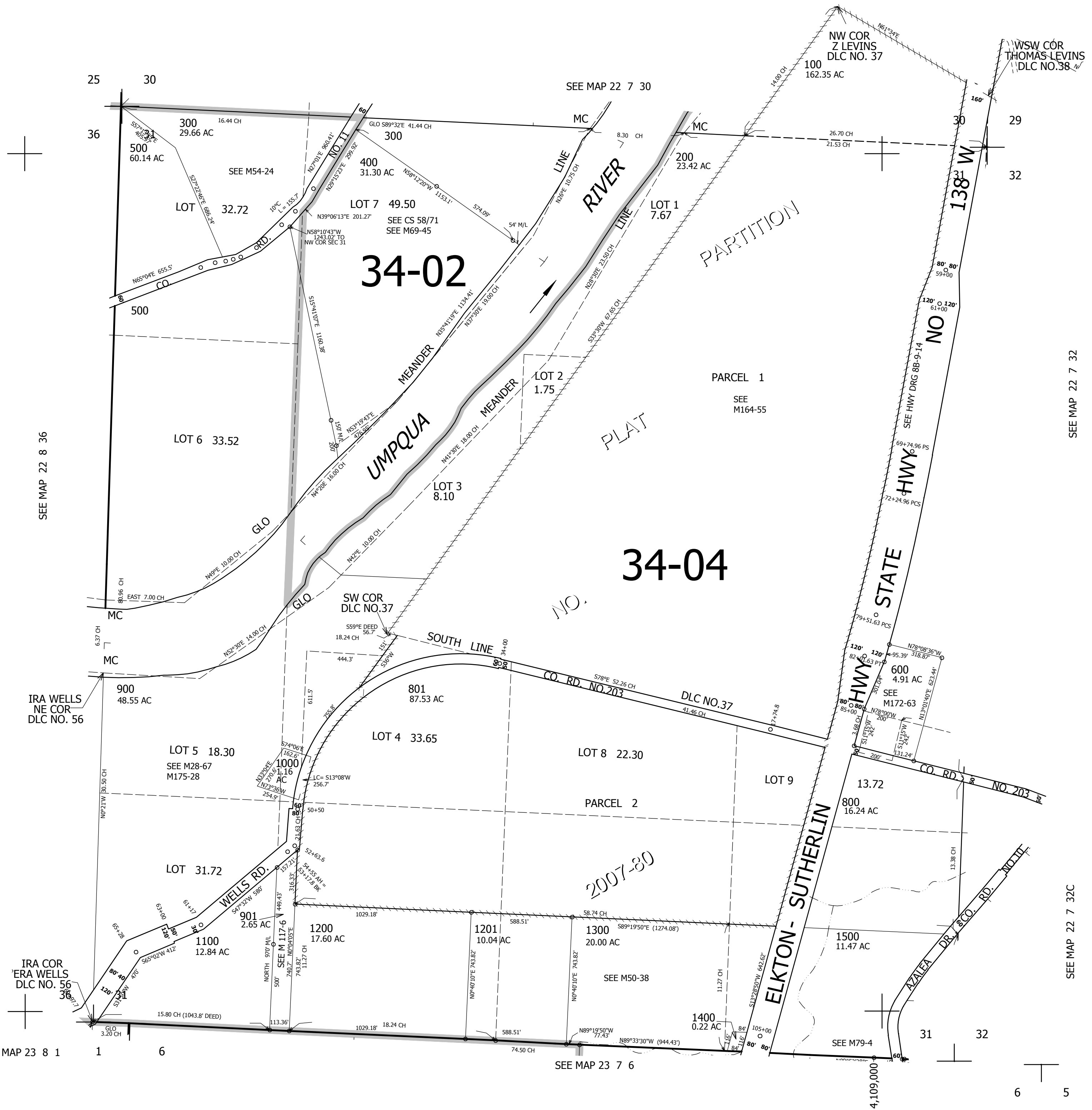
THIS MAP WAS PREPARED FOR  
ASSESSMENT PURPOSE ONLY.

SEC.31 T.22S. R.7W. W.M.  
DOUGLAS COUNTY

REVISED ON  
1-11-17

22 7 31

1" = 400'



CANCELLED NO'S  
701 802 700

SEE MAP 22 7 32

SEE MAP 22 7 32C

722,000

22 7 31