

THIS MAP WAS PREPARED FOR ASSESSMENT PURPOSE ONLY.

1/16 COR

NE1/4 SE1/4 SEC.19 T.22S. R.7W. W.M. DOUGLAS COUNTY

1" = 100'

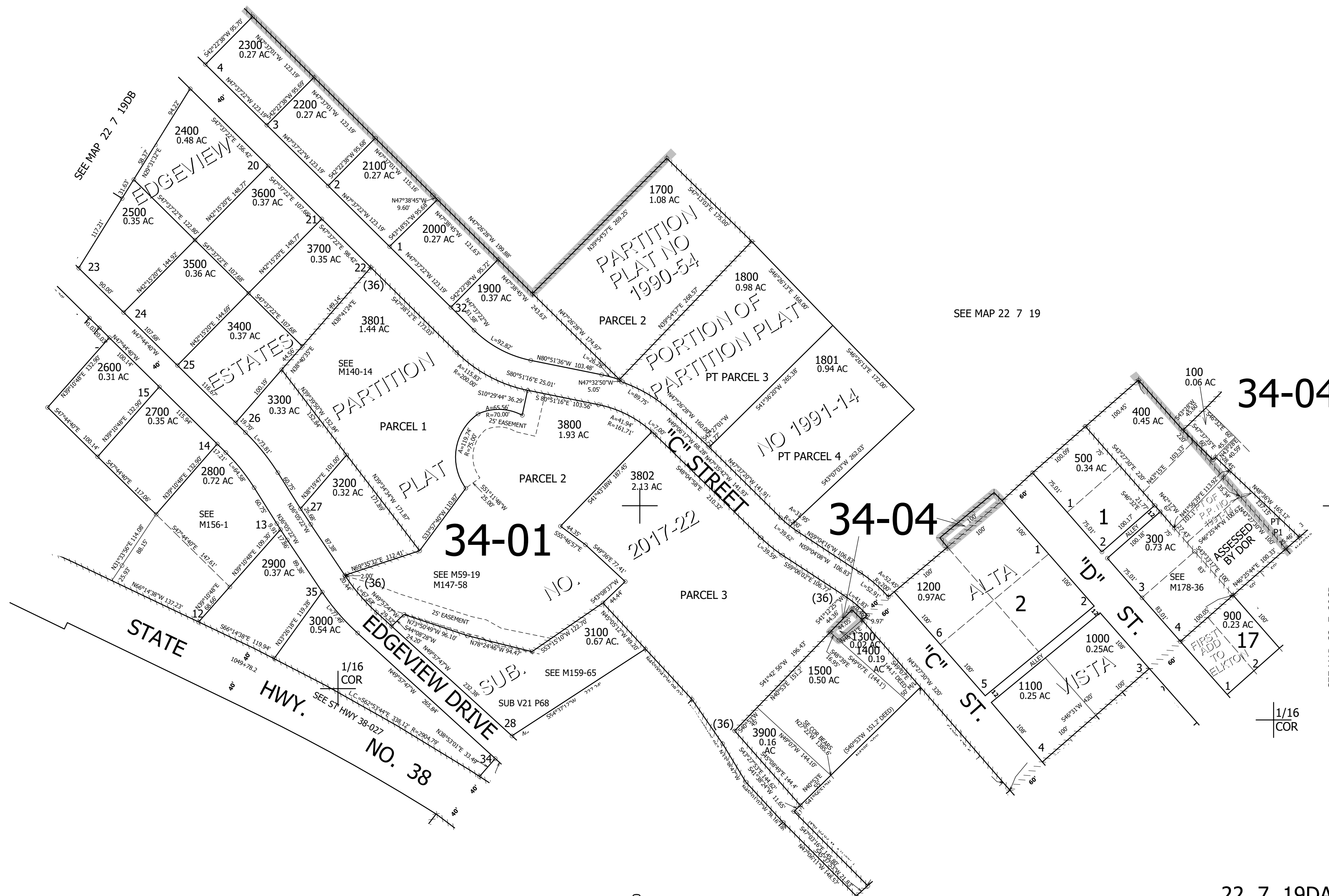
REVISED ON 12-8-21

22 7 19DA ELKTON

1/4 COR

735,000

CANCELLED NO'S
600 1802 1600
401 700 800
201 200



SEE MAP 22 7 19

34-04

34-01

34-04

SEE MAP 22 7 20CB

1/16 COR

22 7 19DA ELKTON

4,109,000

SEE MAP 22 7 19DD