

THIS MAP WAS PREPARED FOR ASSESSMENT PURPOSE ONLY.

SE1/4 SEC.19 T.22S. R.7W. W.M.
DOUGLAS COUNTY

REVISED ON
5-13-11

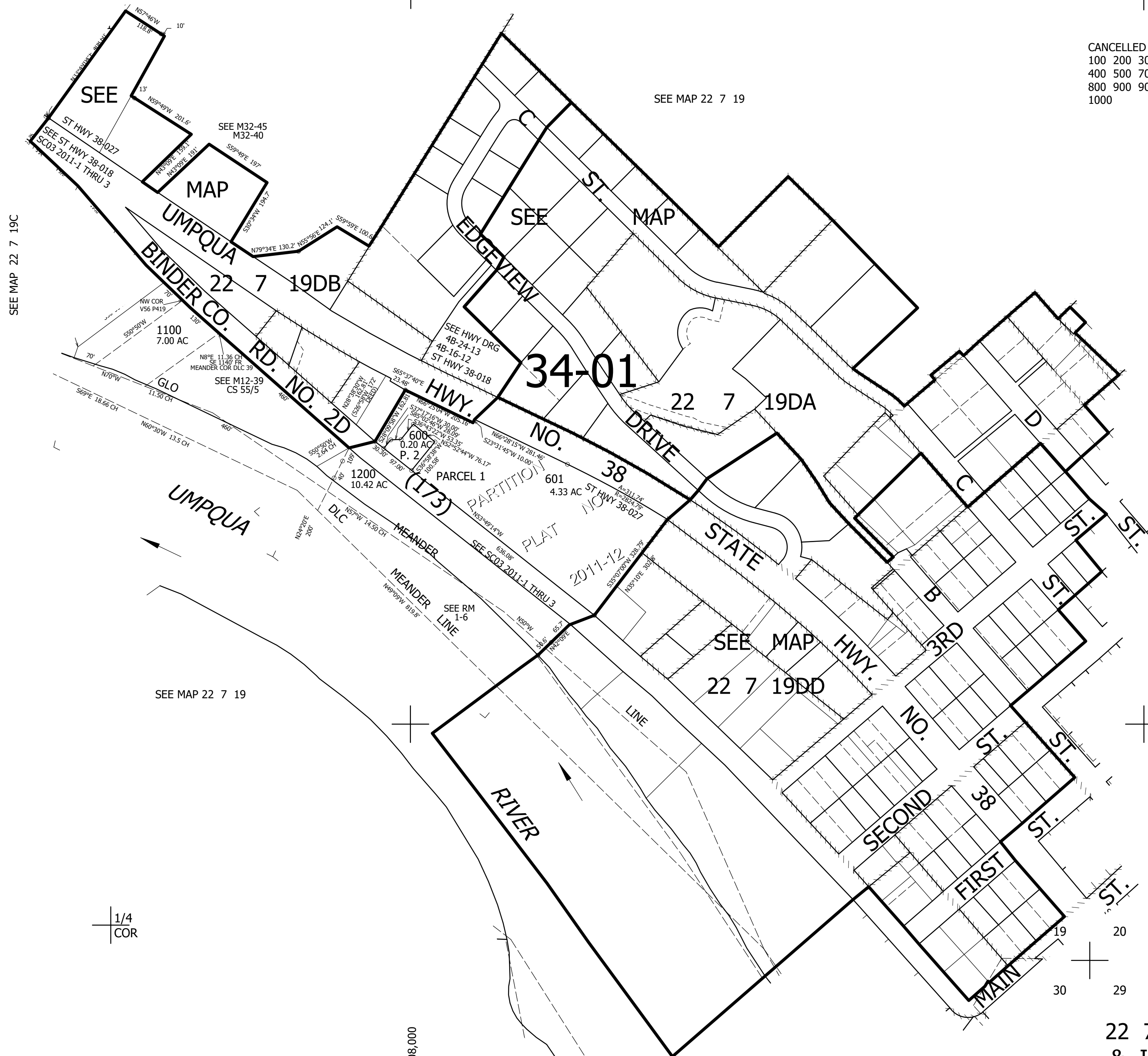
22 7 19D
& INDEX
ELKTON

1" = 200'

CEN
SEC

1/4
COR

CANCELLED NO'S
100 200 300
400 500 700
800 900 901
1000



SEE MAP 22 7 19C

SEE MAP 22 7 19

SEE MAP 22 7 20

SEE MAP 22 7 19

SEE MAP 22 7 19DD

733,000

1/4
COR

4,108,000

SEE MAP 22 7 30

22 7 19D
& INDEX
ELKTON